

**DEXTER**<sup>®</sup>  
COMMERCIAL HARDWARE

# Full line catalog

Locks, closers and exits



# Cylindrical locks and deadbolts



# C1000 Series

## Grade 1 cylindrical locks



### Specifications

- Grade 1, UL listed 3-hour
- 1<sup>3</sup>/<sub>8</sub>" to 2" door range standard
- All functions include 1<sup>1</sup>/<sub>8</sub>" x 2<sup>1</sup>/<sub>4</sub>" square-corner beveled latch with 2<sup>3</sup>/<sub>4</sub>" backset and ANSI 1<sup>1</sup>/<sub>4</sub>" x 4<sup>7</sup>/<sub>8</sub>" curved lip strike
- Accommodates Schlage conventional 6-pin (keyed 6) cylinders in Schlage C keyway, keyed different
- Accommodates SFIC to accept 6-pin/7-pin

### How to order

Product number		Trim		Keying		
1	2	3	4	5		
Series	Function	Design	Finish	Cylinder		
C1000	-	PASS	-	C	626	-
C1000	-	CLRM	-	R	613	-

Grade 1 cylindrical locks			Trim		Keying
Series	Function and lever features		Designs	Finishes	Cylinders
C1000	PASS	F75 Passage (non-clutching)	R = Regular	613	N/A
	PRIV	F76 Privacy (non-clutching)	C = Curved	626	
	ENTR	F109 Entry/office (clutching)			
	NC-ENTR	F109 Entry/office (non-clutching)	R = Regular	613	KDC = Conventional 6-pin, Schlage C, KD
	CLRM	F84 Classroom (clutching)	C = Curved	626	
	CSEC	Classroom security			SFIC = Less SFIC
	STRM	Storeroom (clutching)			
	NC-STRM	Storeroom (non-clutching)	R = Regular	613	KDC = 6-pin, Schlage C
	ASYL	Asylum (clutching)	C = Curved	626	

### Designs



Regular lever



Curved lever

### Finishes



613



626

**C1000 Series**  
**Grade 1 cylindrical locks**

Accessories

**Latches:** All latches are square corner with 1 1/8" x 2 1/4" faceplate. Grade 1 latches are square corner with 2 3/8" and 2 3/4" backsets available. Products with "234" in the description represent a 2 3/4" backset.

Product description	Function	Backset	Latch type	Finish
C1000-SL-630	Passage, privacy	2 3/8"	Springlatch	630
C1000-SL-234-630	Passage, privacy	2 3/4"	Springlatch	630
C1000-DL-630	Entry/office, classroom, classroom security, storeroom	2 3/8"	Deadlatch	630
C1000-DL-234-630	Entry/office, classroom, classroom security, storeroom	2 3/4"	Deadlatch	630

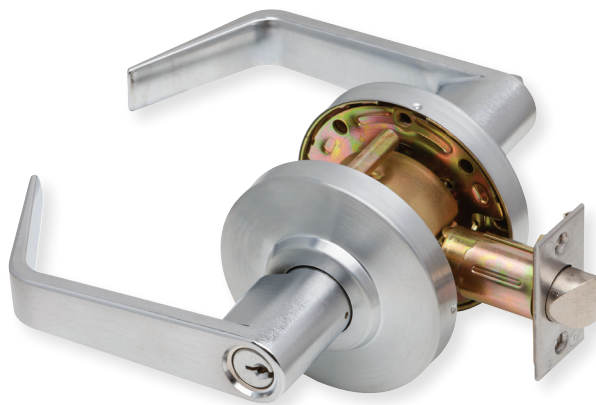
**Strikes:** Radius corner, full lip strike. 1 3/4" x 2 1/4".

Product description	Function	Finish
C1000-RCFLS-626	Radius corner, full lip strike	630



# C2000 Series

## Grade 2 cylindrical locks



### Specifications

- Grade 2, UL listed 3 hour
- 1<sup>3</sup>/<sub>8</sub>" to 1<sup>3</sup>/<sub>4</sub>" door range standard
- Brass (605) ball knobs come packaged with square-corner beveled latch with 2<sup>3</sup>/<sub>4</sub>" backset and ANSI 1<sup>1</sup>/<sub>4</sub>" x 2<sup>1</sup>/<sub>4</sub>" T-Strike standard.
- All other functions (except dummy) include 1<sup>1</sup>/<sub>8</sub>" x 2<sup>1</sup>/<sub>4</sub>" square-corner beveled latch with 2<sup>3</sup>/<sub>4</sub>" backset and ANSI 1<sup>1</sup>/<sub>4</sub>" x 4<sup>7</sup>/<sub>8</sub>" curved lip strike (30-148)
- Accommodates Schlage conventional 6-pin (keyed 6) in Schlage C keyway, keyed different and SFIC cylinders

### How to order

Product number		Trim		Keying	
1	2	3	4	5	
Series	Function	Design	Finish	Cylinder	
C1000	- PASS	- C	- 626	-	
C1000	- CL-CLRM	- R	- 605	-	SFIC

Grade 2 cylindrical locks		Trim		Keying	
Series	Function and lever features	Designs	Finishes	Cylinders	
C2000	PASS	F75 Passage (non-clutching)	R = Regular	605 <sup>1</sup>	N/A
	PRIV	F76 Privacy (non-clutching)	C = Curved	613	
	SDUM	Single dummy (non-clutching)	B = ball (knob)	626/630 <sup>2</sup>	
	CL-ENTR	F109 Entry/office (clutching)			
	ENTR	F109 Entry/office (non-clutching)	R = Regular	605 <sup>1</sup>	KDC = Conventional 6-pin, Schlage C, KD SFIC = Less SFIC
	CL-CLRM	F84 Classroom (clutching)	C = Curved	613	
	CLRM	F84 Classroom (non-clutching)	B = ball (knob)	626/630 <sup>2</sup>	
	CL-STRM	Storeroom (clutching)			
STRM	Storeroom (non-clutching)				

1. 605 finish not available on Curved lever design.

2. Use 626 finish when ordering lever designs and 630 finish for Ball design.

### Designs



Regular lever



Curved lever



Ball knob

### Finishes



605



613



626



630

**C2000 Series**  
**Grade 2 cylindrical locks**

Accessories

**Latches:** All latches are square corner with 1 1/8" x 2 1/4" faceplate. Grade 2 latches are square corner with 2 3/8" and 2 3/4" backsets available. Products with "234" in the description represent a 2 3/4" backset.

Product description	Function	Backset	Latch type	Finish
C2000-SL-630	Passage, privacy	2 3/8"	Springlatch	630
C2000-SL-234-630	Passage, privacy	2 3/4"	Springlatch	630
C2000-SL-613	Passage, privacy	2 3/8"	Springlatch	613
C2000-SL-605	Passage, privacy	2 3/8"	Springlatch	605
C2000-SL-234-605	Passage, privacy	2 3/4"	Springlatch	605
C2000-DL-630	Entry/office, classroom, storeroom	2 3/8"	Deadlatch	630
C2000-DL-234-630	Entry/office, classroom, storeroom	2 3/4"	Deadlatch	630
C2000-DL-613	Entry/office, classroom, storeroom	2 3/8"	Deadlatch	613
C2000-DL-605	Entry/office, classroom, storeroom	2 3/8"	Deadlatch	605
C2000-DL-234-605	Entry/office, classroom, storeroom	2 3/4"	Deadlatch	605

**Strikes:**

Product description	Function	Finish
C2000-RCFLS-630	Radius corner, full lip strike, 1 5/8" x 2 1/4"	630
C2000-RCFLS-613	Radius corner, full lip strike, 1 5/8" x 2 1/4"	613
C2000-ACLS-605	ANSI, curved lip strike, 1 1/4" x 4 7/8"	605
C2000-TS-605	T-strike, 1 1/4" x 2 3/4"	605

**Tailpieces:**

Product description	Function	Finish	Cylinder
C2000-TP-SFIC	SFIC 6- and 7-pin with shielding spacer	N/A	N/A

# DB1000 Series

## Grade 1 deadbolts



### Specifications

- Grade 1, UL listed 3-hour
- 1<sup>3</sup>/<sub>8</sub>" - 1<sup>7</sup>/<sub>8</sub>" Conventional cylinder door range; 1<sup>5</sup>/<sub>8</sub>" - 2" SFIC door range
- All functions include 2<sup>3</sup>/<sub>8</sub>" - 2<sup>3</sup>/<sub>4</sub>" universal square corner latch (30-253) and 1<sup>1</sup>/<sub>8</sub>" x 2<sup>3</sup>/<sub>4</sub>" square corner lipless strike
- Accommodates Schlage conventional 6-pin (keyed 6) in Schlage C keyway, keyed different and SFIC cylinders

### How to order

Product number		Trim		Keying	
1	2	3	4		
Series	Function	Finish	Cylinder		
DB1000	-	SCT	-	626	SFIC

Grade 1 deadbolts			Trim	Keying
Series	Functions		Finishes	Cylinders
DB1000	SCT	Single cylinder x thumbturn	613	KDC = Conventional 6-pin, Schlage C, KD
	DCT	Double cylinder	626	SFIC = Less SFIC

### Finishes



613



626

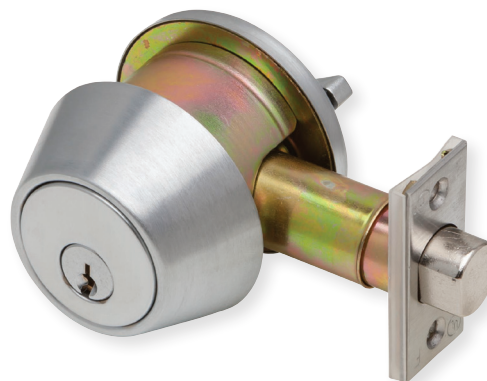
### Accessories

#### Drive-in conversion kits

Product description	Function	Finish	Cylinder
DB2000-4WB-KIT-626	Drive-in replacement latch	626	N/A
DB2000-4WB-KIT-613	Drive-in replacement latch	613	N/A

# DB2000 Series

## Grade 2 deadbolts



### Specifications

- Grade 2, UL listed 3-hour
- 1 <sup>3</sup>/<sub>8</sub>" – 1 <sup>3</sup>/<sub>4</sub>" Conventional cylinder door range; 1 <sup>5</sup>/<sub>8</sub>" - 2" SFIC door range
- All functions include 2 <sup>3</sup>/<sub>8</sub>" - 2 <sup>3</sup>/<sub>4</sub>" universal square corner latch (30-253) and 1 <sup>1</sup>/<sub>8</sub>" x 2 <sup>3</sup>/<sub>4</sub>" square corner lipless strike
- Accommodates Schlage conventional 6-pin (keyed 6) in Schlage C keyway, keyed different and SFIC cylinders

### How to order

Product number		Trim		Keying	
1	2	3	4		
Series	Function	Finish	Cylinder		
DB2000	-	605	KDC	-	

Grade 2 deadbolts		Trim	Keying
Series	Functions	Finishes	Cylinders
DB2000	SCT	Single cylinder x thumbturn	605
	DCT	Double cylinder	613
			626

KDC = Conventional 6-pin, Schlage C, KD  
SFIC = Less SFIC

### Finishes



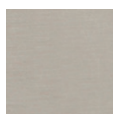
605



613



626



630\*

\* Available Q1 2020

### Accessories

#### Tailpieces

Product description	Function	Finish	Cylinder
DB2000-TP-SFIC	SFIC Tailpiece kit including fork for G2 DB	N/A	N/A
DB2000-TP	SFIC Tailpiece for G2 DB	N/A	N/A



# DB2000 Series

## Grade 2 drive-in deadbolts



### Specifications

- Grade 2, UL listed 3-hour
- 1<sup>3</sup>/<sub>8</sub>" – 1<sup>3</sup>/<sub>4</sub>" Conventional cylinder door range; 1<sup>5</sup>/<sub>8</sub>" - 2" SFIC door range
- 4WB (4-way bolt) function includes square corner faceplate and drive-in style collar is installed out of box
- 4WB-KIT contains an adjustable latch with both square corner faceplate and drive-in style collar in the box
- Accommodates Schlage conventional 6-pin (keyed 6) in Schlage C keyway, keyed different

### How to order

Product number		Trim	Keying
1	2	3	4
Series	Function	Finish	Cylinder
DB2000	-	626	KDC

Drive-in deadbolts		Trim	Keying
Series	Function and lever features	Finishes	Cylinders
DB2000	4WB-SCT Single cylinder x thumbturn drive-in	613 626	KDC = Conventional 6-pin, Schlage C, KD

### Finishes

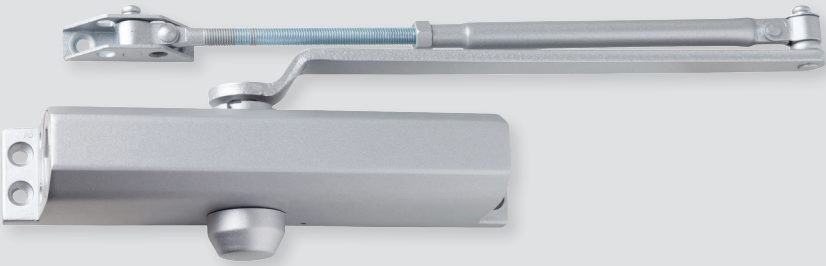
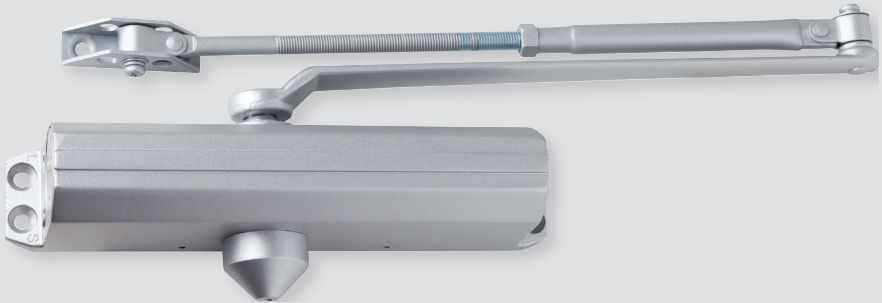
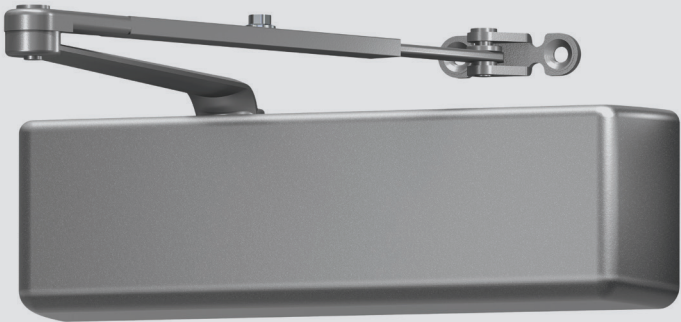


613



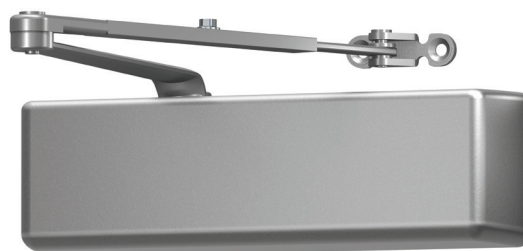
626

# Surface door closers



# DCH4000 Series

## Heavy duty surface door closers



### Specifications

- Grade 1 compliant, UL 10C Listed (non-hold open arms), ADA compliant at size 1
- Adjustable spring size 1-6
- 5" x 2 1/4" mounting hole pattern
- Staked, independent adjustment values: sweep speed, latch speed and back-check
- Single piece, cast iron body
- Universal hardware pack

### Closers

Product description	Cylinder type	Cover	Arm function	Finish
DCH4000-STD-FULL-RW/PA-ALUM	STD	Full	Rw/PA	ALUM
DCH4000-STD-FULL-HW/PA-ALUM	STD	Full	Hw/PA	ALUM
DCH4000-STD-FULL-DS-ALUM	STD	Full	DS	ALUM
DCH4000-STD-FULL-DS/HO-ALUM	STD	Full	DS/HO	ALUM
DCH4000-STD-FULL-RW/PA-DKBRZ	STD	Full	Rw/PA	DKBRZ
DCH4000-STD-FULL-HW/PA-DKBRZ	STD	Full	Hw/PA	DKBRZ
DCH4000-STD-FULL-DS-DKBRZ	STD	Full	DS	DKBRZ
DCH4000-STD-FULL-DS/HO-DKBRZ	STD	Full	DS/HO	DKBRZ

### Arm types

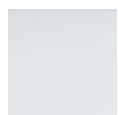
**Regular arm (Rw/PA):** Non-handed, forged, regular arm with adjustable forearm assembly to accommodate a range of doors and frame reveal conditions. Mounts hinge side, top jamb or parallel arm. PA shoe included to allow installation in a parallel arm configuration.

**Hold-open arm (Hw/PA):** Non-handed, forged, hold open arm with adjustable forearm assembly to accommodate a range of doors and frame reveal conditions. Mounts hinge side, top jamb or parallel arm. PA shoe included to allow installation in a parallel arm configuration.

**Dead stop arm (DS):** Non-handed, forged, heavy duty, parallel arm includes a positive mechanical stop and non-adjustable forearm assembly for high volume traffic or potentially abusive installation conditions.

**Dead stop hold-open arm (DS/HO):** Non-handed, forged, heavy duty, hold-open parallel arm includes a positive mechanical stop and non-adjustable forearm assembly for high volume traffic or potentially abusive installation conditions. Also includes a manually selective hold open function.

### Finishes



ALUM/689



DKBRZ/695

# DCH1000 Series

Heavy duty surface door closers



## Specifications

- Grade 1 compliant, UL 10C Listed (non-hold open arms), ADA compliant at size 1
- Adjustable spring size 1-6
- 6 <sup>3</sup>/<sub>4</sub>" x 2 <sup>3</sup>/<sub>8</sub>" mounting hole pattern
- Staked, independent adjustment values: sweep speed, latch speed, and back-check
- Single piece, cast aluminum body
- Universal hardware pack

## Closers

Product description	Cylinder type	Cover	Arm function	Finish
DCH1000-STD-FULL-RW/PA-ALUM	STD	Full	Rw/PA	ALUM
DCH1000-STD-FULL-RW/PA-DKBRZ	STD	Full	Rw/PA	DKBRZ
DCH1000-STD-FULL-HW/PA-ALUM	STD	Full	Hw/PA	ALUM
DCH1000-STD-FULL-DS-ALUM	STD	Full	DS	ALUM
DCH1000-STD-FULL-DS/HO-ALUM	STD	Full	DS/HO	ALUM

## Arm types

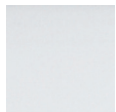
**Regular arm (Rw/PA):** Non-handed, regular arm with adjustable forearm assembly to accommodate a range of doors and frame reveal conditions. Mounts hinge side, top jamb or parallel arm. PA shoe included to allow installation in a parallel arm configuration.

**Hold-open arm (Hw/PA):** Non-handed, hold open arm with adjustable forearm assembly to accommodate a range of doors and frame reveal conditions. Mounts hinge side, top jamb or parallel arm. PA shoe included to allow installation in a parallel arm configuration.

**Dead stop arm (DS):** Non-handed, stamped, heavy duty, parallel arm includes a positive mechanical stop and non-adjustable forearm assembly for high volume traffic or potentially abusive installation conditions.

**Dead stop hold-open arm (DS/HO):** Non-handed, stamped, heavy duty, hold-open parallel arm includes a positive mechanical stop and non-adjustable forearm assembly for high volume traffic or potentially abusive installation conditions. Also includes a manually selective hold open function.

## Finishes



ALUM/689



DKBRZ/695

# DCM1000 Series

Medium duty surface door closers



## Specifications

- Grade 1 compliant, UL 10C Listed (non-hold open arms), ADA compliant at size 1
- Adjustable spring size 1-6
- 12" x 3/4" mounting hole pattern
- Staked, independent adjustment values: sweep speed, latch speed, and back-check
- Single piece, cast aluminum body
- Universal hardware pack

## Closers

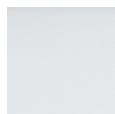
Product description	Cylinder type	Cover	Arm function	Finish
DCM1000-STD-SLIM-RW/PA-ALUM	STD	Slim	Rw/PA	ALUM
DCM1000-STD-SLIM-RW/PA-DKBRZ	STD	Slim	Rw/PA	DKBRZ
DCM1000-STD-FULL-RW/PA-ALUM	STD	Full	Rw/PA	ALUM
DCM1000-STD-FULL-RW/PA-DKBRZ	STD	Full	Rw/PA	DKBRZ
DCM1000-STD-SLIM-HW/PA-ALUM	STD	Slim	Hw/PA	ALUM
DCM1000-STD-SLIM-HW/PA-DKBRZ	STD	Slim	Hw/PA	DKBRZ
DCM1000-STD-FULL-HW/PA-ALUM	STD	Full	Hw/PA	ALUM
DCM1000-STD-FULL-HW/PA-DKBRZ	STD	Full	Hw/PA	DKBRZ

## Arm types

**Regular arm (Rw/PA):** Non-handed, regular arm with adjustable forearm assembly to accommodate a range of doors and frame reveal conditions. Mounts hinge side, top jamb or parallel arm. PA shoe included to allow installation in a parallel arm configuration.

**Hold-open arm (Hw/PA):** Non-handed, hold open arm with adjustable forearm assembly to accommodate a range of doors and frame reveal conditions. Mounts hinge side, top jamb or parallel arm. PA shoe included to allow installation in a parallel arm configuration.

## Finishes



ALUM/689

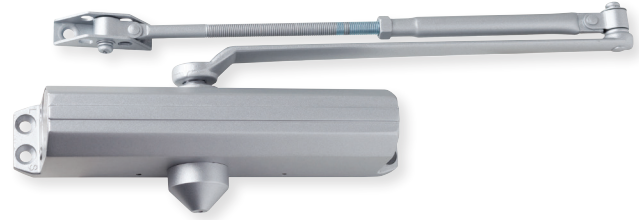


DKBRZ/695



# DCL2000 Series

Light duty surface door closers



## Specifications

- Grade 1 compliant, UL 10C Listed (non-hold open arms), ADA compliant at size 1
- Adjustable spring size 1-6
- 9 1/16" x 3/4" mounting hole pattern
- Independent adjustment values: sweep speed, latch speed, and back-check
- Single piece, cast aluminum body
- Universal hardware pack

## Closers

Product description	Cylinder type	Cover	Arm function	Finish
DCL2000-STD-LESS-RW/PA-ALUM	STD	Less	Rw/PA	ALUM
DCL2000-STD-LESS-RW/PA-DKBRZ	STD	Less	Rw/PA	DKBRZ
DCL2000-STD-LESS-HW/PA-ALUM	STD	Less	Hw/PA	ALUM
DCL2000-STD-FULL-RW/PA-ALUM	STD	Full	Rw/PA	ALUM

## Arm types

**Regular arm (Rw/PA):** Non-handed, regular arm with adjustable forearm assembly to accommodate a range of doors and frame reveal conditions. Mounts hinge side, top jamb or parallel arm. PA shoe included to allow installation in a parallel arm configuration.

**Hold-open arm (Hw/PA):** Non-handed, hold open arm with adjustable forearm assembly to accommodate a range of doors and frame reveal conditions. Mounts hinge side, top jamb or parallel arm. PA shoe included to allow installation in a parallel arm configuration.

## Finishes



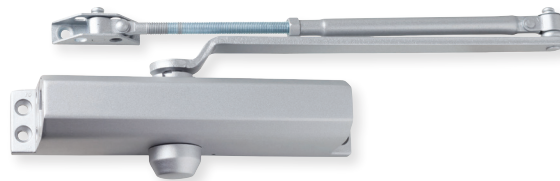
ALUM/689



DKBRZ/695

# DCR8000 Series

Residential duty surface door closers



## Specifications

- Grade 1 compliant, UL 10C Listed (non-hold open arms), ADA compliant at size 1, (180 deg - TJ and Pull Side)
- Adjustable spring size 1-4
- 9 1/16" x 3/4" mounting hole pattern
- Independent adjustment values: sweep speed, latch speed, and back-check
- Single piece, cast aluminum body
- Universal hardware pack

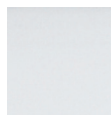
## Closers

Product description	Cylinder type	Cover	Arm function	Finish
DCR8000-STD-LESS-RW/PA-ALUM	STD	Less	Rw/PA	ALUM
DCR8000-STD-LESS-RW/PA-DKBRZ	STD	Less	Rw/PA	DKBRZ

## Arm types

**Regular arm (Rw/PA):** Non-handed, regular arm with adjustable forearm assembly to accommodate a range of doors and frame reveal conditions. Mounts hinge side, top jamb or parallel arm. PA shoe included to allow installation in a parallel arm configuration.

## Finishes



ALUM/689



DKBRZ/695

## DCH1000, DCM1000, DCL2000 and DCR8000 Series Drop plates

### Drop plates

Product description	Plate type	Finish
DCH1000P-DP18-ALUM	Pull side/Top jamb	ALUM
DCH1000P-DP18-DKBRZ	Pull side/Top jamb	DKBRZ
DCH1000P-DP18PA-ALUM	Parallel arm	ALUM
DCH1000P-DP18PA-DKBRZ	Parallel arm	DKBRZ
DCM1000P-DP18TJ-ALUM	Pull side/Top jamb	ALUM
DCM1000P-DP18TJ-DKBRZ	Pull side/Top jamb	DKBRZ
DCM1000P-DP18PA-ALUM	Parallel arm	ALUM
DCM1000P-DP18PA-DKBRZ	Parallel arm	DKBRZ
DCL2000P-DP18TJ-ALUM	Top jamb	ALUM
DCL2000P-DP18TJ-DKBRZ	Top jamb	DKBRZ
DCL2000P-DP18PA-ALUM	Parallel arm	ALUM
DCL2000P-DP18PA-DKBRZ	Parallel arm	DKBRZ

Note: DCL2000P drop plates are also compatible with DCR8000 series closers.

#### DCH1000 Series

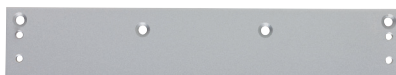


DCH1000  
Pull side/top jamb

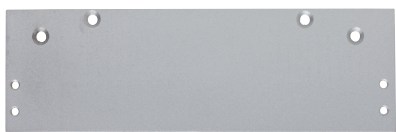


DCH1000  
Parallel arm

#### DCM1000 Series



DCM1000  
Pull side/Top jamb



DCM1000  
Parallel arm

#### DCL2000 Series

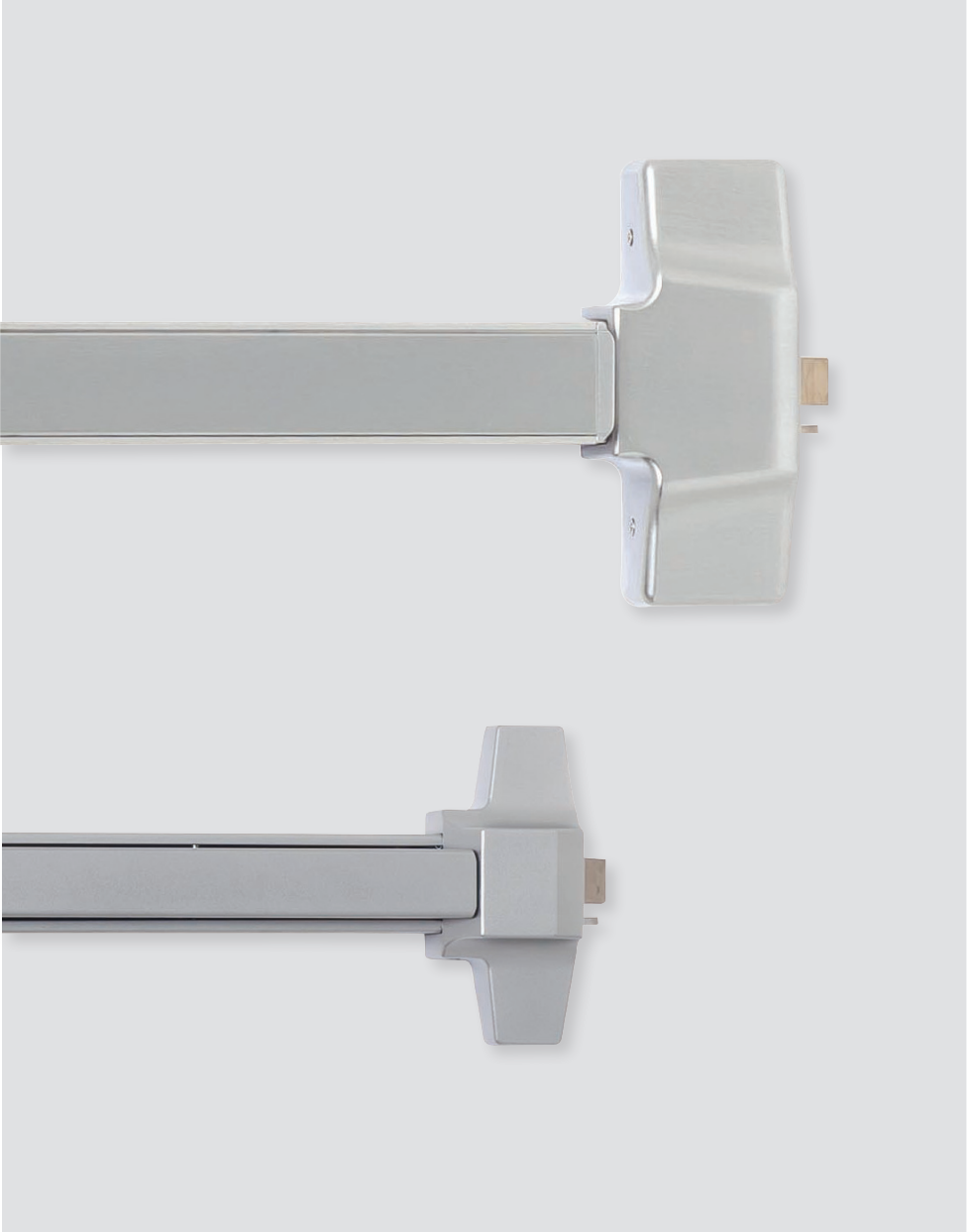


DCL2000  
Top jamb



DCL2000  
Parallel arm

# Exit devices



# ED1000 Series

Grade 1 exit devices



## Specifications

- Grade 1, UL listed panic device, UL listed 3-hour fire device
- Durable, aluminum mechanism case construction
- Deadlatching standard
- Devices fit standard 1<sup>3</sup>/<sub>4</sub>" thick door
- 4<sup>1</sup>/<sub>4</sub>" minimum stile width
- Hex key dogging standard on all panic devices
- All devices and trim are non-handed
- Universal hardware pack for wood and hollow metal
- Door widths: 36" device fits 29" to 36" door size; 48" device fits 33" to 48" door size

## ED1000-R Series rim panic device

Product description	Trim function	Device length	Finish
ED1000-R-EO-3 FT-US26D	Exit Only	3'	US26D
ED1000-R-EO-4 FT-US26D	Exit Only	4'	US26D
ED1000-R-EO-3 FT-US32D	Exit Only	3'	US32D
ED1000-R-EO-4 FT-US32D	Exit Only	4'	US32D
ED1000-R-EO-3 FT-US10B	Exit Only	3'	US10B
ED1000-R-EO-4 FT-US10B	Exit Only	4'	US10B

## ED1000-R-F Series rim fire exit hardware

Product description	Trim function	Device length	Finish
ED1000-R-F-EO-3 FT-US26D	Exit Only	3'	US26D
ED1000-R-F-EO-3 FT-US10B	Exit Only	3'	US10B

## ED1000-V Series surface vertical rod panic device

Product description	Trim function	Device length	Door height	Finish
ED1000-V-EO-3 FT-7'DH-US26D	Exit Only	3'	7'	US26D
ED1000-V-EO-3 FT-7'DH-US10B	Exit Only	3'	7'	US10B



**ED1000 Series**  
Trim and accessories

**Trim**

Product description	Function	Cylinder	Finish
ED1000T-CLRM-R-ESC-NC-US26D	Escutcheon lever - Classroom	NC (requires mortise <sup>1</sup> )	US26D
ED1000T-CLRM-R-ESC-NC-US10B	Escutcheon lever - Classroom	NC (requires mortise <sup>1</sup> )	US10B
ED1000T-NL-R-ESC-NC-US26D	Escutcheon lever - Night latch	NC (requires rim)	US26D
ED1000T-NL-R-ESC-NC-US10B	Escutcheon lever - Night latch	NC (requires rim)	US10B
ED1000T-PASS-R-ESC-US26D	Escutcheon lever - Passage blank escutcheon	-	US26D
ED1000T-PASS-R-ESC-US10B	Escutcheon lever - Passage blank escutcheon	-	US10B
ED1000T-CLRM-TP-NC-US26D	Thumbpiece pull plate - Classroom	NC (requires mortise <sup>1</sup> )	US26D
ED1000T-CLRM-TP-NC-US10B	Thumbpiece pull plate - Classroom	NC (requires mortise <sup>1</sup> )	US10B
ED1000T-NL-HPUL-NC-US26D	Handle pull plate - Night latch	NC (requires rim)	US26D
ED1000T-NL-HPUL-NC-US10B	Handle pull plate - Night latch	NC (requires rim)	US10B

NC = No cylinder included

<sup>1</sup> Mortise cylinder with standard cam similar to Schlage B502-191 cam



Escutcheon lever -  
Classroom



Escutcheon lever -  
Night latch



Escutcheon lever -  
Passage blank  
escutcheon

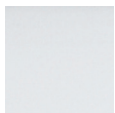


Thumbpiece  
pull plate -  
Classroom



Handle  
pull plate -  
Night latch

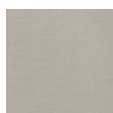
**Finishes**



US26D



US10B



US32D

**Extension rods**

Product description	Length	Finish
ED1000-EXTRD-US26D	12"	US26D
ED1000-EXTRD-US10B	12"	US10B

# ED1500 Series

Grade 1 exit devices



## Specifications

- Grade 1, UL listed panic device, UL listed 3-hour fire rim device
- Durable, steel mechanism case construction
- Deadlatching standard
- Devices fit standard 1<sup>3</sup>/<sub>4</sub>" thick door
- 3<sup>1</sup>/<sub>2</sub>" minimum stile width
- Hex key dogging standard on all panic devices
- Rim devices and trim are non-handed; Surface vertical devices easily field reversible
- Universal hardware pack for wood and hollow metal
- Door widths: 36" device fits 29" to 36" door size; 48" device fits 33" to 48" door size

## ED1500-R Series rim panic device

Product description	Trim function	Device length	Finish
ED1500-R-EO-3 FT-SP28	Exit only	3'	SP28
ED1500-R-EO-4 FT-SP28	Exit only	4'	SP28
ED1500-R-EO-3 FT-SP313	Exit only	3'	SP313
ED1500-R-EO-4 FT-SP313	Exit only	4'	SP313

## ED1500-R-F Series rim fire exit device

Product description	Trim function	Device length	Finish
ED1500-R-F-EO-3 FT-SP28	Exit only	3'	SP28
ED1500-R-F-EO-3 FT-SP313	Exit only	3'	SP313

## ED1500-V Series surface vertical rod panic device

Product description	Trim function	Device length	Door height	Finish
ED1500-V-EO-3 FT-7'DH-SP28	Exit only	3'	7'	SP28
ED1500-V-EO-3 FT-7'DH-SP313	Exit only	3'	7'	SP313

**ED1500 Series**  
Trim and accessories

**Trim**

Product description	Function	Cylinder	Finish
ED1500T-CLRM-R-ESC-NC-SP28	Escutcheon lever - Classroom	NC (requires mortise <sup>1</sup> )	SP28
ED1500T-CLRM-R-ESC-NC-SP313	Escutcheon lever - Classroom	NC (requires mortise <sup>1</sup> )	SP313
ED1500T-NL-R-ESC-NC-SP28	Escutcheon lever - Night latch	NC (requires mortise <sup>1</sup> )	SP28
ED1500T-NL-R-ESC-NC-SP313	Escutcheon lever - Night latch	NC (requires mortise <sup>1</sup> )	SP313
ED1500T-NL-PULL-NC-SP28	Raised lip pull plate - Night latch	NC (requires rim)	SP28
ED1500T-NL-PULL-NC-SP313	Raised lip pull plate - Night latch	NC (requires rim)	SP313
ED1500T-DUM-PULL-SP28	Raised lip pull plate - Dummy	-	SP28
ED1500T-DUM-PULL-SP313	Raised lip pull plate - Dummy	-	SP313
ED1500T-CLRM-R-KDC-SP28	Key in lever round rose - Classroom	KDC	SP28
ED1500T-CLRM-R-KDC-SP313	Key in lever round rose - Classroom	KDC	SP313
ED1500T-NL-R-KDC-SP28	Key in lever round rose - Night latch	KDC	SP28
ED1500T-NL-R-KDC-SP313	Key in lever round rose - Night latch	KDC	SP313
ED1500T-CLRM-R-SFIC-SP28	Key in lever round rose - Classroom	Less SFIC	SP28
ED1500T-NL-R-SFIC-SP28	Key in lever round rose - Night latch	Less SFIC	SP28
ED1500T-NL-PULL-ESC-NC-SP28	Handle pull plate - Night latch	NC (requires rim)	SP28
ED1500T-NL-PULL-ESC-NC-SP313	Handle pull plate - Night latch	NC (requires rim)	SP313
ED1500T-DUM-PULL-ESC-SP28	Handle pull plate - Dummy	-	SP28
ED1500T-DUM-PULL-ESC-SP28	Handle pull plate - Dummy	-	SP313

NC = No cylinder included

KDC = KIL cylinder, Schlage C Keyway, Keyed differently

<sup>1</sup> Mortise cylinder with standard cam similar to Schlage B502-191 cam



Escutcheon lever -  
Classroom/  
Night latch



Raised lip  
pull plate -  
Night latch



Raised lip  
pull plate -  
Dummy



Key in lever round  
rose - Classroom/  
Night latch  
Less SFIC not shown



Handle  
pull plate -  
Night latch



Handle  
pull plate -  
Dummy

**Finishes**



SP28

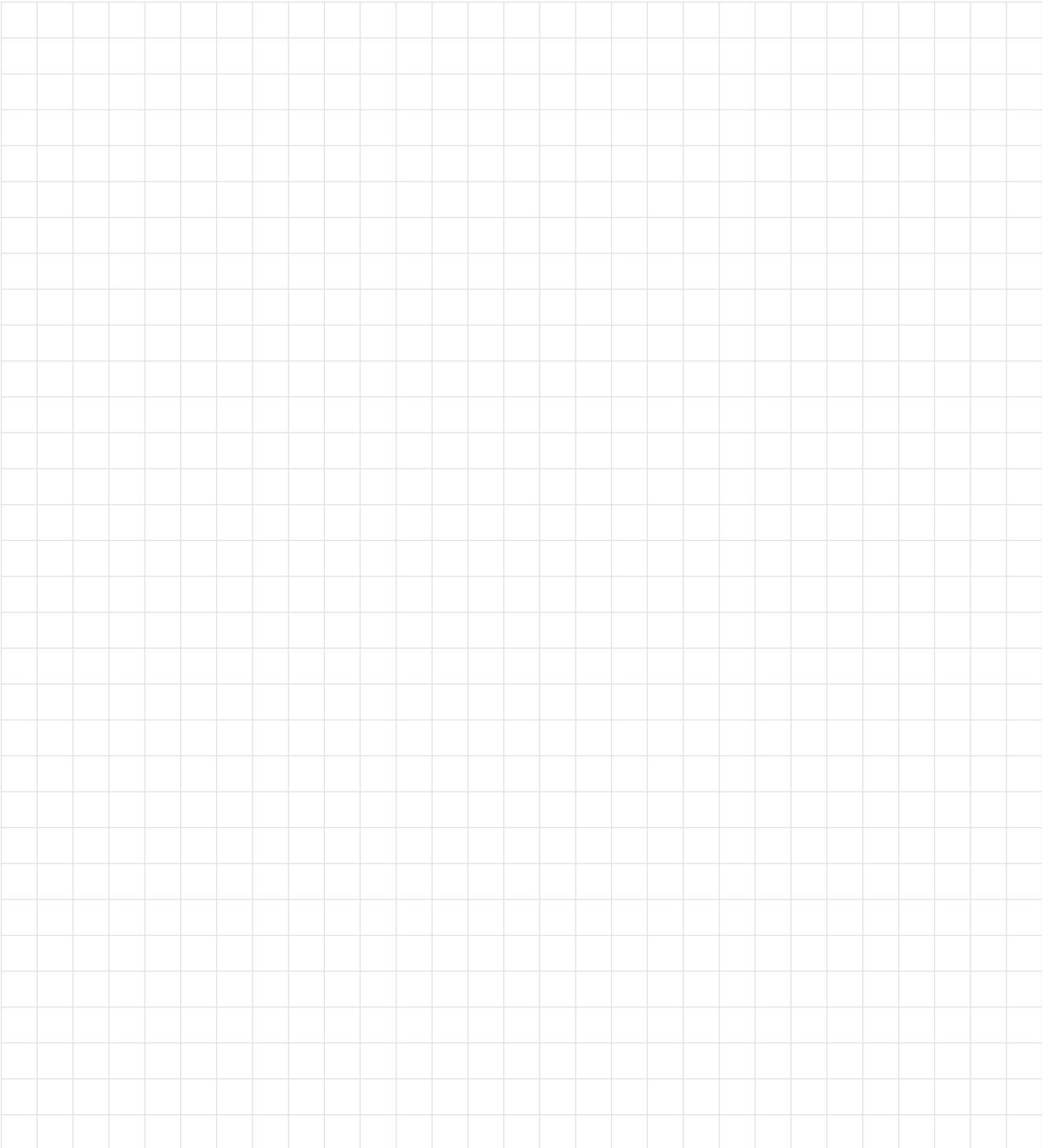


SP313

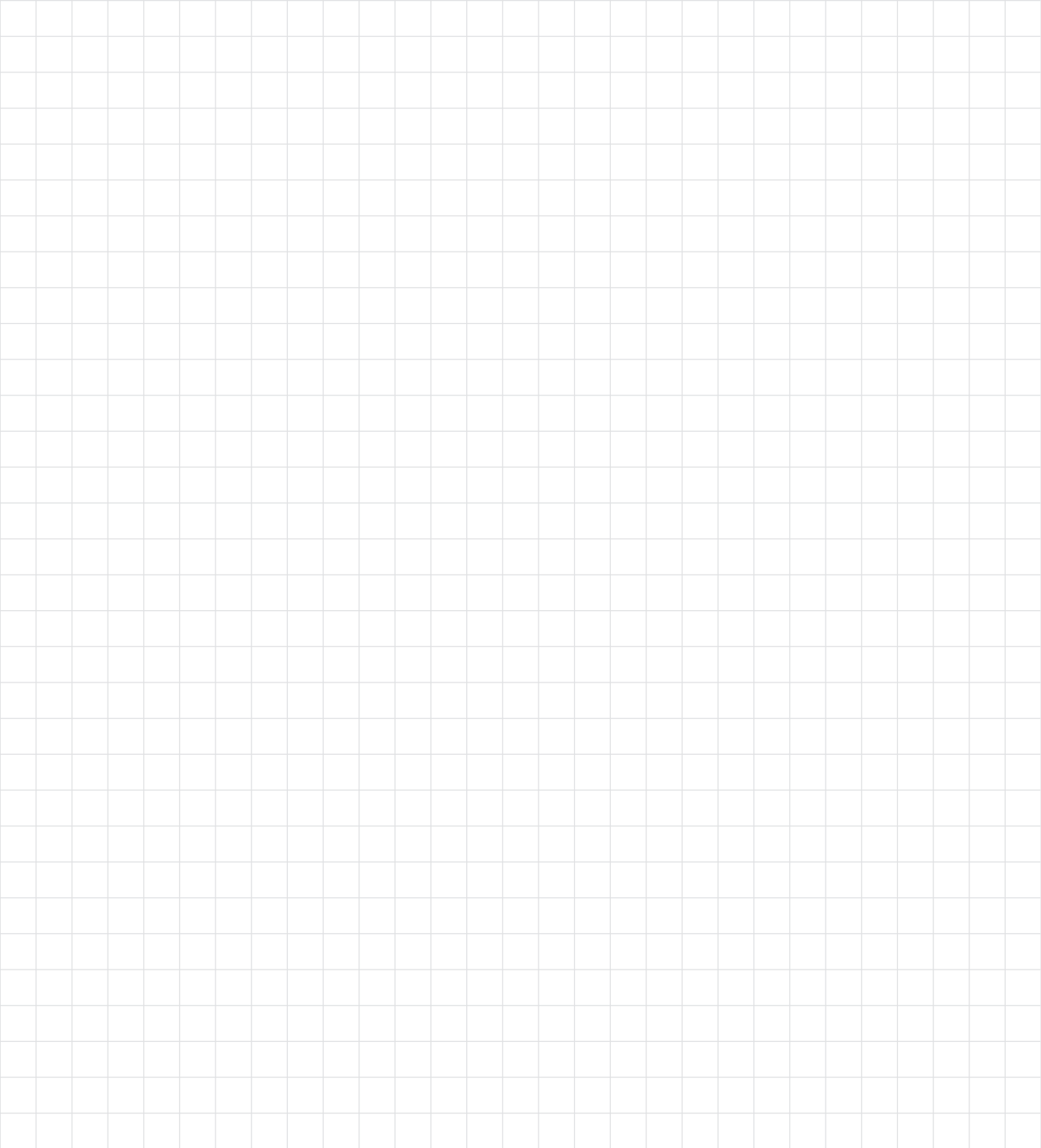
**Extension rods**

Product description	Length	Finish
ED1500-EXTRD-SP28	12"	SP28
ED1500-EXTRD-SP313	12"	SP313

# Notes



# Notes





## About Allegion

Allegion (NYSE: ALLE) is a global pioneer in seamless access, with leading brands like CISA®, Interflex®, LCN®, Schlage®, SimonsVoss® and Von Duprin®. Focusing on security around the door and adjacent areas, Allegion secures people and assets with a range of solutions for homes, businesses, schools and institutions. Allegion had \$2.7 billion in revenue in 2018, and sells products in almost 130 countries.

For more, visit [www.allegion.com](http://www.allegion.com).

KRYPTONITE ■ LCN ■  ■ STEELCRAFT ■ VON DUPRIN