

Healthcare Hardware

Product Catalog

Experience a safer
and more open world

Table of Contents

Healthcare Hardware

Mortise Locks

ML2000, ML20900 ECL and ML20600 NAC Series with BHSS Trim	3
ML2000, ML20900 ECL and ML20600 NAC Series with BLSS Trim	4
ML2000 and ML20900 Series with HSS Trim	5
ML2000, ML20900 ECL and ML20600 NAC Series with HPSK Trim	6

Tubular Lock

HP3000 Series Tubular Lock with Push/Pull Paddle Trim	7
Electrified Options & Accessories	8-9
Cylinders	10
Strikes/Kits	11-12
Thumbturns	13
How to Order	14
Quick Codes	15-16
Architectural Specifications	17

ML2000, ML20900 ECL and ML20600 NAC Series with BHSS Trim*

Part of the Behavioral Health Series® of products, the ML2000 Series mortise lock with BHSS trim has tapered surfaces and an integrated lever and escutcheon, bringing an elegant style to behavioral health environments. The ML2000 Series' heavy-duty design and ANSI/BHMA Grade 1 strength help it to withstand abuse in any environment.

Features

Handing

Handed - Must specify on order.

Door Thickness

1-3/4" (44mm) standard.
Optional door thicknesses available; see Quick Codes, page 15.

Backset

2-3/4" (70mm).

Lockcase

Heavy-gauge steel, 5-7/8" (149mm) x 4" (102mm) x 15/16" (24mm).

Front

Heavy-gauge steel, 8" (203mm) x 1-1/4" (32mm) x -3/32" (2mm). Accommodates flat doors and doors beveled 1/8" (3mm) in 2" (51mm).

Armored Front

Wrought stainless steel attached by machine screws to lockcase front. Utilizes security Torx® screws. Torx® screws come standard.

Latchbolt

2-piece mechanical with anti-friction insert, 5/8" (16mm) x 1" (25mm) x 3/4" (19mm) throw.

Auxiliary Latchbolt

9/16" (14mm) effective throw and 3/8" (10mm) effective auxiliary latch deadlocking.

Deadbolt

One-piece stainless steel, 19/32" (15mm) x 1-1/4" (32mm) x 1" (25mm) throw.

Hub

Lever: steel, 5/16" (8mm).

Lever

Cast stainless steel.

Escutcheon

Cast stainless steel.

Strike

Wrought stainless steel, ANSI straight lip standard, 4-7/8" (124mm) x 1-1/4" (32mm) x 1-1/8" (29mm) lip to center. Optional strikes, lip lengths and ANSI wrought strike box available; see Quick Codes, page 16.

Thumbturn

Cast stainless steel construction. See page 13.

Cylinder

Brass, 6-pin, L4 keyway, 0-bitted standard. Optional cylinders available; see Quick Codes, page 15.

Keys

Two nickel silver standard.

Keying Features Available

Master keying
Construction master keying
Visual key control
Concealed key control
7-pin cylinder
Security cylinder
Access 3 cylinder
Pyramid cylinder
Interchangeable core (IC)
Security IC
Access 3 IC
Pyramid IC

Functions

Available with all ML2000 functions except ML2050, ML2070, ML2080 and ML2087. Available with all ML20900 electrified mortise lock functions. Refer to the ML2000 mortise lock catalog (45300) for function descriptions.

Electrical Specifications

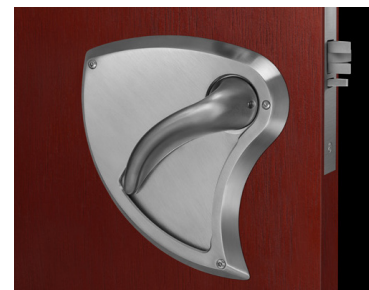
(Fail Safe/Fail Secure)
12/24VDC @ 15mA Continuous
12/24VDC Peak current draw = .5A
(Maximum of 2 locks per 1A Power Supply)
Monitor Switch Rating: 2 amp @ 24VDC
Note: Operating voltage not to exceed +/- 10%.
See Quick Codes, page 16.

Monitor Options

See Quick Codes, page 16.

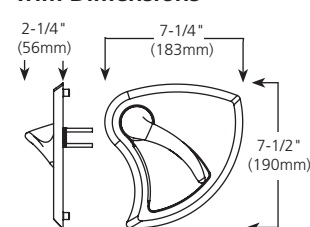
Warranty

Ten-year limited. Two-year limited warranty on electronic components.



Patent pending and/or patent
www.assaabloydss.com/patents

Trim Dimensions



Certification/Compliance

ANSI/BHMA

Certified A156.13 Series 1000, Operational and Security Grade 1. Meets A117.1 Accessibility Code.



UL-cUL-UL10C Positive Pressure

All locks listed for A label and lesser class doors, 4' (122cm) x 10' (305cm) single or 8' (244cm) x 10' (305cm) pair.

Letter F and UL symbol on armored front indicate listing.

Any retrofit or other field modification to a fire rated opening can potentially impact the fire rating of the opening, and Corbin Russwin, Inc. makes no representations or warranties concerning what such impact may be in any specific situation. When retrofitting any portion of an existing fire-rated opening, or specifying and installing a new fire-rated opening, please consult with a code specialist or local code official (Authority Having Jurisdiction) to ensure compliance with all applicable codes and ratings.

*Although this product is better designed for behavioral health applications than traditional trim, it does not eliminate the risk that an object can be affixed to, or around it.

Features

ML2000, ML20900 ECL and ML20600 NAC Series with BLSS Trim*

Part of the Behavioral Health Series®, the ML2000 Series mortise lock with BLSS trim offers durability and strength in behavioral healthcare settings. With a variety of available functions, it is flexible enough to use in many applications, and the sloped surfaces and overlapping lever and rose construction address common concerns in behavioral health.

Features

Handing

Non-handed.

Door Thickness

1-3/4" (44mm) standard.
Optional door thicknesses available; see Quick Codes, page 15.

Backset

2-3/4" (70mm).

Lockcase

Heavy-gauge steel, 5-7/8" (149mm) x 4" (102mm) x 15/16" (24mm).

Front

Heavy-gauge steel, 8" (203mm) x 1-1/4" (32mm) x -3/32" (2mm). Accommodates flat doors and doors beveled 1/8" (3mm) in 2" (51mm).

Armored Front

Wrought stainless steel attached by machine screws to lockcase front. Utilizes security Torx® screws. Torx® screws come standard.

Latchbolt

2-piece mechanical with anti-friction insert, 5/8" (16mm) x 1" (25mm) x 3/4" (19mm) throw.

Auxiliary Latchbolt

9/16" (14mm) effective throw and 3/8" (10mm) effective auxiliary latch deadlocking.

Deadbolt

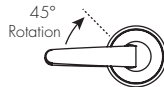
One-piece stainless steel, 19/32" (15mm) x 1-1/4" (32mm) x 1" (25mm) throw.

Hub

Lever: steel, 5/16" (8mm).

Lever

Cast stainless steel.
Inside and outside levers rotate freely up and down at 45 degrees release feature: lever freely rotates up to 45°.



Rose

Cast stainless steel.

Strike

Wrought stainless steel, ANSI straight lip standard, 4-7/8" (124mm) x 1-1/4" (32mm) x 1-1/8" (29mm) lip to center. Optional strikes, lip lengths and ANSI wrought strike box available; see Quick Codes, page 16.

Thumbturn

Cast stainless steel construction. See page 13.

Cylinder

Brass, 6-pin, L4 keyway, 0-bitted standard. Optional cylinders available; see Quick Codes, page 15.

Keys

Two nickel silver standard.

Keying Features Available

Master keying
Construction master keying
Visual key control
Concealed key control
7-pin cylinder
Security cylinder
Access 3 cylinder
Pyramid cylinder
Interchangeable core (IC)

Security IC

Access 3 IC

Pyramid IC

Functions

Available with all ML2000 functions except ML2050, ML2070, ML2080 and ML2087.

Available with all ML20900 electrified mortise lock functions.

Refer to the ML2000 mortise lock catalog (45300) for function descriptions.

Electrical Specifications (Fail Safe/Fail Secure)

12/24VDC @ 15mA Continuous
12/24VDC Peak current draw = .5A (Maximum of 2 locks per 1A Power Supply)
Monitor Switch Rating: 2 amp @ 24VDC
Note: Operating voltage not to exceed +/- 10%.
See Quick Codes, page 16.

Monitor Options

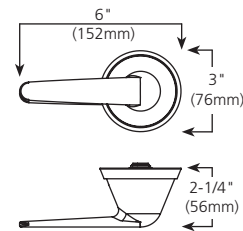
See Quick Codes, page 16.

Warranty

Ten-year limited. Two-year limited warranty on electronic components.



Trim Dimensions



Certification/Compliance

ANSI/BHMA

Certified A156.13 Series 1000, Operational and Security Grade 1. Meets A117.1 Accessibility Code.



A.D.A.

Conforms to ADA requirements for barrier-free accessibility.

UL-cUL-UL10C Positive Pressure

All locks listed for A label and lesser class doors, 4' (122cm) x 10' (305cm) single or 8' (244cm) x 10' (305cm) pair. Letter F and UL symbol on armored front indicate listing.



Any retrofit or other field modification to a fire rated opening can potentially impact the fire rating of the opening, and Corbin Russwin, Inc. makes no representations or warranties concerning what such impact may be in any specific situation. When retrofitting any portion of an existing fire-rated opening, or specifying and installing a new fire-rated opening, please consult with a code specialist or local code official (Authority Having Jurisdiction) to ensure compliance with all applicable codes and ratings.

**Although this product is better designed for behavioral health applications than traditional trim, it does not eliminate the risk that an object can be affixed to, or around it.*

ML2000 and ML20900 Series with HSS Trim*

The anti-harm knob (HSS) is designed for safety and security by eliminating catch points with a tapered knob recessed into the rose, a tapered thumbturn (for mortise lock thumbturn functions) with Torx® pin security screws, tapered cylinder collars and concealed mounting screws. Available as sectional trim, the anti-harm knob features recessed finger holes for a better grip and the reliability of the ML2000 Series ANSI/BHMA grade 1 mortise lock. Ideal for psychiatric or detention facilities.

Features

Handing

Handed; quick reversible. The lockset can be re-handed without disassembling the lock case.

Door Thickness

1-3/4" (44mm) standard.
Optional door thicknesses available; see Quick Codes, page 15.

Backset

2-3/4" (70mm).

Lockcase

Heavy-gauge steel, 5-7/8" (149mm) x 4" (102mm) x 15/16" (24mm).

Front

Heavy-gauge steel, 8" (203mm) x 1-1/4" (32mm) x -3/32" (2mm). Accommodates flat doors and doors beveled 1/8" (3mm) in 2" (51mm).

Armored Front

Wrought brass, bronze or stainless steel attached by machine screws to lockcase front.

Latchbolt

2-piece mechanical with anti-friction insert, 5/8" (16mm) x 1" (25mm) x 3/4" (19mm) throw.

Auxiliary Latchbolt

9/16" (14mm) effective throw and 3/8" (10mm) effective auxiliary latch deadlocking.

Deadbolt

One-piece stainless steel, 19/32" (15mm) x 1-1/4" (32mm) x 1" (25mm) throw.

Hub

Lever: steel, 5/16" (8mm).

Strike

Wrought stainless steel, ANSI straight lip standard, 4-7/8" (124mm) x 1-1/4" (32mm) x 1-1/8" (29mm) lip to center. Optional strikes, lip lengths and ANSI wrought strike box available; see Quick Codes, page 16.

Thumbturn

Cast stainless steel construction. See page 13.

Cylinder

Brass, 6-pin, L4 keyway, 0-bitted standard. Brass, fixed 6-pin conventional fixed core cylinder.
Optional cylinders available; see Quick Codes, page 15.

Keys

Two nickel silver standard.

Keying Features Available

Master keying
Construction master keying
Visual key control
Concealed key control
7-pin cylinder
Security cylinder
Access 3 cylinder
Pyramid cylinder
Interchangeable core (IC)
Security IC
Access 3 IC
Pyramid IC

Functions

Available with all ML2000 functions except ML2029, ML2030, ML2049, ML2050, ML2059, ML2062, ML2065, ML2067, ML2070, ML2072, ML2073, ML2075, ML2080, ML2082 and ML2087.

Available with all ML20900 electrified mortise lock functions except NAC. Refer to the ML2000 mortise lock catalog (45300) for function descriptions.

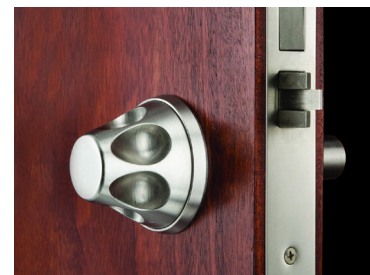
Electrical Specifications (Fail Safe/Fail Secure)

12/24VDC @ 15mA Continuous
12/24VDC Peak current draw = .5A
(Maximum of 2 locks per 1A Power Supply)
Monitor Switch Rating: 2 amp @ 24VDC
Note: Operating voltage not to exceed +/- 10%.

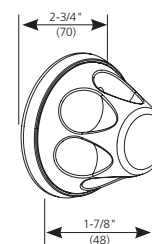
See Quick Codes, page 16.

Warranty

Ten-year limited. Two-year limited warranty on electronic components.



Trim Dimensions



Certification/Compliance

ANSI/BHMA

Certified A156.13 Series 1000, Operational and Security Grade 1.



UL /cUL-UL10C Positive Pressure
All locks listed for A label and lesser class doors, 4' (122cm) x 10' (305cm) single or 8' (244cm) x 10' (305cm) pair. Letter F and UL symbol on armored front indicate listing.

Any retrofit or other field modification to a fire rated opening can potentially impact the fire rating of the opening, and Corbin Russwin, Inc. makes no representations or warranties concerning what such impact may be in any specific situation. When retrofitting any portion of an existing fire-rated opening, or specifying and installing a new fire-rated opening, please consult with a code specialist or local code official (Authority Having Jurisdiction) to ensure compliance with all applicable codes and ratings.

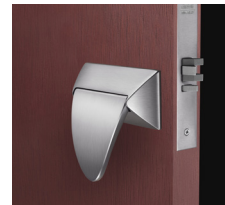
**Although this product is better designed for behavioral health applications than traditional trim, it does not eliminate the risk that an object can be affixed to, or around it.*

Features

ML2000, ML20900 ECL and ML20600 NAC Series with HPSK Trim

The ML2000 Series mortise lock with push/pull paddle trim provides an aesthetically pleasing alternative to products with standard push/pull trim. Its heavy-duty design and ANSI/BHMA Grade1 strength help it to withstand abuse from rigorous environments. Multiple mounting orientations, hands free operation and a sleek, aesthetic form, make the ML2000 Series mortise lock ideal for use in healthcare facilities and educational facilities.

Patent pending and/or patent www.assaabloydss.com/patents



Features

Handing

Handed; quick reversible. The lockset can be re-handed without disassembling the lock case.

Door Thickness

1-3/4" (44mm).

Backset

2-3/4" (70mm).

Lockcase

Heavy-gauge steel, 5-7/8" (149mm) x 4" (102mm) x 15/16" (24mm).

Front

Heavy-gauge steel, 8" (203mm) x 1-1/4" (32mm) x -3/32" (2mm). Accommodates flat doors and doors beveled 1/8" (3mm) in 2" (51mm).

Armored Front

Wrought brass, bronze or stainless steel attached by machine screws to lockcase front.

Latchbolt

2-piece mechanical with anti-friction insert, 5/8" (16mm) x 1" (25mm) x 3/4" (19mm) throw.

Auxiliary Latchbolt

9/16" (14mm) effective throw and 3/8" (10mm) effective auxiliary latch deadlocking.

Deadbolt

One-piece stainless steel, 19/32" (15mm) x 1-1/4" (32mm) x 1" (25mm) throw.

Hub

Lever: steel, 5/16" (8mm).

Covers

Cast stainless steel.

Paddles

Cast stainless steel. Non-handed.

"PUSH & PULL" Identification available, Quick Code M38.

Laser engraving available, see Custom Laser Engraving brochure)

Strike

Wrought stainless steel, ANSI straight lip standard, 4-7/8" (124mm) x 1-1/4" (32mm) x 1-1/8" (29mm) lip to center. Optional strikes, lip lengths and ANSI wrought strike box available; see Quick Codes, page 16.

Thumbturn

Cast stainless steel construction. See page 13.

Cylinder

Brass, 6-pin, L4 keyway, 0-bitted standard. Optional cylinders available; see Quick Codes, pages 15.

Keys

Two nickel silver standard.

Keying Features Available

Master keying
Construction master keying
Visual key control
Concealed key control
7-pin cylinder
Security cylinder
Access 3 cylinder
Pyramid cylinder
Interchangeable core (IC)
Security IC
Access 3 IC
Pyramid IC

Functions

Available with all ML2000 functions except ML2050, ML2070, ML2080 and ML2087. Available with all ML20900 electrified mortise lock functions. Refer to the ML2000 mortise lock catalog (45300) for function descriptions.

Electrical Specifications (Fail Safe/Fail Secure)

12/24VDC @ 15mA Continuous
12/24VDC Peak current draw = .5A (Maximum of 2 locks per 1A Power Supply)
Monitor Switch Rating: 2 amp @ 24VDC
Note: Operating voltage not to exceed +/- 10%.

See Quick Codes, page 16.

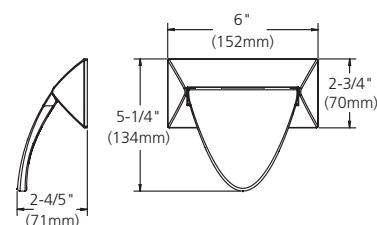
Monitor Options

See Quick Codes, page 16.

Mounting Options

Paddle trim can be mounted as horizontal (up or down) and vertical (sideways) orientations in the field.

Cover and Paddle Dimensions



Warranty

Ten-year limited. Two-year limited warranty on electronic components.

Certification/Compliance

ANSI/BHMA

Certified A156.13 Series 1000, Operational and Security Grade 1. Meets A117.1 Accessibility Code.



UL-cUL-UL10C Positive Pressure

All locks listed for A label and lesser class doors, 4' (122cm) x 10' (305cm) single or 8' (244cm) x 10' (305cm) pair.

Letter F and UL symbol on armored front indicate listing.

Any retrofit or other field modification to a fire rated opening can potentially impact the fire rating of the opening, and Corbin Russwin, Inc. makes no representations or warranties concerning what such impact may be in any specific situation. When retrofitting any portion of an existing fire-rated opening, or specifying and installing a new fire-rated opening, please consult with a code specialist or local code official (Authority Having Jurisdiction) to ensure compliance with all applicable codes and ratings.

Features/Functions

HP3000 Series Tubular Lock with Push/Pull Paddle Trim

The HP3000 Series tubular Lock with push/pull paddle trim provides an aesthetically pleasing alternative to products with standard push/pull trim. Its heavy-duty design and ANSI/BHMA Grade 1 strength help it to withstand abuse from rigorous environments. Multiple mounting orientations, hands free operation and a sleek, aesthetic form, make the HP3000 Series ideal for use in healthcare facilities and educational facilities.

Features

Handing

Passage (HP3010) function is non-handed.
Privacy (HP3020) function is handed.
Specify hand.

Door Thickness

1-3/4" (44mm) standard.
Optional door thicknesses available; see Quick Codes, page 15.

Backset

5" (127mm) standard.
Optional: 2-3/4" (70mm) and 7" (177mm); see Quick Codes, page 15.

Latchbolt

Brass, 1/2" (13mm) throw

Strike

ANSI curved lip strike standard, 4-7/8" x 1-1/4" x 1-1/4" lip to center. Optional strikes, lip lengths and ANSI wrought strike box available; See Quick Codes, page 16.

Covers

Cast stainless steel

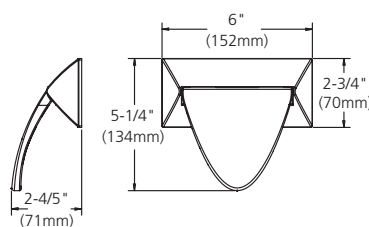
Paddles

Cast stainless steel
"PUSH & PULL" Identification available, Quick Code M38.
Laser engraving available, see Custom Laser Engraving brochure)

Mounting Options

Paddle trim can be mounted as horizontal (up or down) and vertical (sideways) orientations in the field.

Cover and Paddle Dimensions



Warranty

One-year limited



Patent pending and/or patent
www.assaabloydss.com/patents

Certification/Compliance

ANSI/BHMA

Certified A156.2 Series 4000
Grade 1.



UL-cUL

Listed for use on 3 hour fire doors (4' x 8' single and smaller doors). UL symbol on front stamped letter F indicates listing.

Any retrofit or other field modification to a fire rated opening can potentially impact the fire rating of the opening, and Corbin Russwin, Inc. makes no representations or warranties concerning what such impact may be in any specific situation. When retrofitting any portion of an existing fire-rated opening, or specifying and installing a new fire-rated opening, please consult with a code specialist or local code official (Authority Having Jurisdiction) to ensure compliance with all applicable codes and ratings.

ADA

Meets A117.1 Accessibility Code.

Functions

Series/Function	Type	Function Description
HP3010	Passage	<ul style="list-style-type: none"> Both paddles retract latch Ideal for patient rooms and closets
HP3020	Privacy	<ul style="list-style-type: none"> Inside paddle always retracts latch Outside paddle retracts latch, except when locked by inside push button Closing door unlocks outside paddle Includes emergency release Vertical orientation required Ideal for bathrooms

Electrified Options & Accessories

ML20900 Series with BHSS, BHL, HSS, HPSK Trim

BPS Power Supply

Operation

Power supplies are designed to provide reliable filtered and regulated power for long life to a variety of electrified hardware components. All modular power supplies are designed to meet UL 1481 Standards. Recommended for the ML20900, delayed egress exit devices and electric trim.

Features

- Fire panel emergency release input
- PC Board mounted system LED indicator
- Regulated and filtered with input and output protection
- Battery charging is provided from a separate output terminal

Electrical Specifications

Note: Batteries are not included with the BPS power supply

- Inputs: 115VAC @600mA
- Outputs: 12/24 VDC @ 1 Amp, 1.5 Amp or 4 Amp, Filtered and regulated output

Listings

- UL & cUL listed 1012 General Purpose Power Supply
- Fire & Burglar Alarm Power Supply Unit URT2
- Releasing device Accessory SYSW
- Access Control Systems Units ALVY
- Burglar Alarm Systems Power Supply APHY

Applications

- D – Delayed Egress
- M97 – Electric Dogging
- SAF – Fail Safe mortise device trim control
- SEC – Fail Secure mortise device trim control
- ML20900



Model	Enclosure	Input	Output
BPS-24-1	12" (304mm) x 9" (229mm) x 4" (102mm)	115VAC, 50/60 Hz.	1 Amp @ 24 VDC
BPS-24-2	14" (356mm) x 14" (356mm) x 4" (102mm)	115VAC, 50/60 Hz.	2 Amp @ 24 VDC
BPS-24-4	15" (381mm) x 18" (457mm) x 6" (152mm)	115VAC, 50/60 Hz.	4 Amp @ 24VDC
BPS-12-1	12" (304mm) x 9" (229mm) x 4" (102mm)	115VAC, 50/60 Hz.	1 Amp @ 12 VDC
BPS-12-3	14" (356mm) x 14" (356mm) x 4" (102mm)	115VAC, 50/60 Hz.	3 Amp @ 12 VDC

Requirements for Electrical and Data Transfer

To answer the demand for "smart" electronic access control and locking solutions that require fast, easy, and cost-effective installation, ASSA ABLOY Group brands use the ElectroLynx® standardized plug-in connectors and color-coded wiring system.

With *ElectroLynx*, doorway components come pre-wired for easy hookup to the power source. The key to the system is the transfer device hinge that carries power from the frame to the locking hardware.

Features of ElectroLynx:

- Makes it easy to bring power to the locking hardware
- Wires have connectors that snap together, like plugging a telephone into a jack

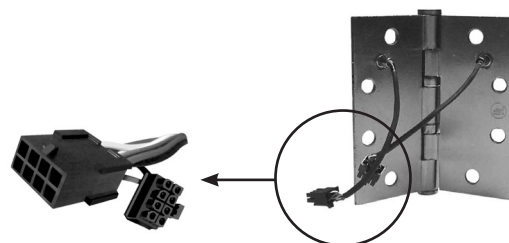
To connect a ML20900 electrified mortise lock to the electronic access control system, the following items are required:

- ML20900 electrified mortise lock
- ASSA ABLOY Door Group pre-wired door, or *ElectroLynx* retrofit cable (order from McKinney)

- Electronic transfer device (*ElectroLynx* electronic transfer hinge or Electrical Power Transfer with standard hinge, from McKinney)
- *ElectroLynx* cable from the hinge to above the ceiling (order from McKinney)

Information regarding cable selection, hinge requirements and order strings can be found in the McKinney Transfer Device Solutions catalog. Consult 800-810-WIRE (9473) with questions on application specifications and requirements.

The McKinney QC8 *ElectroLynx* Hinge is recommended for all ML20900 functions and electrified options.

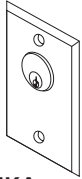


Electrified Options & Accessories

ML20900 Series with BHSS, BHL, HSS, HPSK Trim

Exit Controls and Switches

Key Switches



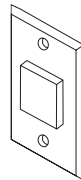
MKA

MKA - (1) SPDT Maintained
 MK - (1) SPDT Momentary
 MKN - (1) SPDT Momentary NS
 MK2 - (1) DPDT Momentary
 MKPZ x MKS - (1) SPDT Momentary with audio Double Gang x Additional Switch
 Note: All key switches come standard with 12/24 VDC bi-color LED.

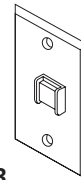
Specifications

- Keyswitch for operation using a standard 1-1/8" mortise cylinder (A02 cam) (cylinder not included).
- Contact Rating 5 Amps @ 12-24VDC
- SPDT 3-position.

Push Buttons



PB2



PB3

PB2 - (1) SPDT Momentary
 PB2 - (1) DPST Remote Momentary
 PB3 - (1) DPST Momentary
 PB3A - (1) DPST Maintained (Alt. Action)
 PB3EA - (1) DPST Alternate

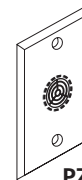
Specifications

- 3 Amps @ 12-24 VDC

Indicator

ZLP - (1) Red and Green LED on narrow gang plate.

Audible/Visual Annunciators



PZ1

PZ1 - Sonalert 90db @ 2ft. 12-24VDC.
 Mounted on one gang stainless steel plate.

Digital Entry

DK-11 - Digital Keypad - 4 User
 DK-26SS - Digital Keypad NS - 59 User - SS Finish
 DK-26BK - Digital Keypad NS - 59 User - Black Finish

Power Transfers

TSB B-C - Door Cord

Cylinders

ML2000 and ML20900 Series with BHSS, BLSS, HSS, HPSK Trim

Cylinders

2 nickel silver keys
Finishes: See Key Systems catalog



Interchangeable Core (I.C.)
Shown

Mortise Cylinder Type	Quick Code	Hotel Function	42 (inside) 52, 53, 55, 56, 58, 69 Functions	All Other Keyed and 42 (outside) Functions
Access 3 [®] Patented	AP	1501-114-A01	1500-114-A02	1500-114-A01
Access 3 [®] Security	AS	1601-114-A01	1600-114-A02	1600-114-A01
Access 3 [®] High Security	AHS	1701-114-A01	1700-114-A02	1700-114-A01
Access 3 [®] Patented IC	ACP	N/A	1580-114-A02	1580-114-A01
Access 3 [®] Security IC	ACS	N/A	1680-114-A02	1680-114-A01
Access 3 [®] High Security IC	ACHS	N/A	1788-114-A02	1788-114-A01
Pyramid HS	PHS	N/A	1020-114-A02	1020-114-A01
Pyramid HS IC	PCHS	N/A	1030-114-A02	1030-114-A01
Pyramid Security	PS	N/A	1027-114-A02	1027-114-A01
Pyramid Security IC	PCS	N/A	1037-114-A02	1037-114-A01
Conventional 6-pin	N/A	1001-114-A01	1000-118-A02	1000-118-A01
Conventional 7-pin	7P	N/A	1000-114-A02-7	1000-114-A01-7
6-pin IC	C6	1081-138-A01	1080-114-A02	1080-114-A01
7-pin IC	C7	N/A	1080-112-A02-7	1080-112-A01-7
Security	HS	1011-114-A01	1010-118-A02	1010-118-A01
Security IC	CHS	1091-138-A01	1090-114-A02	1090-114-A01

To order optional cylinder with lockset, see Quick Codes, page 15.
To order cylinder separately, specify Part No. x Keyway x Finish
(e.g., 1000-118-A01 x L4 x 626).

Strikes/Kits

ML2000 and ML20900 Series with BHSS, BLSS, HSS, HPSK Trim

Strikes

ANSI Straight Lip (standard)

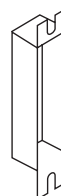
Stainless steel
Non-handed
4-7/8" (124mm) x 1-1/4" (32mm) x 1-1/8" (29mm) lip to center (standard)
Optional lip lengths: 1-1/8" (29mm), 1-1/4" (32mm), 1-3/8" (35mm), 1-1/2" (38mm), 1-3/4" (44mm), 2" (51mm), 2-1/4" (57mm), 2-1/2" (64mm), 2-3/4" (70mm), 3" (76mm)

ANSI Curved Lip

Stainless steel
Handed
4-7/8" (124mm) x 1-1/4" (32mm) x 1-1/4" (32mm) lip to center (standard)
Optional lip lengths: 1-3/8" (35mm), 1-1/2" (38mm), 1-3/4" (44mm), 2" (51mm), 2-1/4" (57mm), 2-1/2" (64mm), 2-3/4" (70mm), 3" (76mm)

ANSI Wrought Strike Box

To order with lockset, see Quick Codes, page 16.
To order separately, specify 120F76.



Open Back

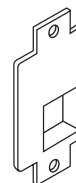
Size: 5-1/4" (133mm) x 1/4" (32mm).

	Part No.	Description
 All functions	236L72	Straight Lip
	340L60	Curved Lip for RH/LHR
	340L61	Curved Lip for LH/RHR
 Blank Filler Plate	236L70	Straight Lip

To order strike with lockset, see How to Order, page 16.
To order strike separately, specify Part No. x Lip Length x Finish (e.g., 340L60 x 1-1/2" x 626).

Hand	Door Thickness	Part
LHR	1-3/4" (44mm)	411L63 016
	2" (51mm)	411L63 018
	2-1/4" (57mm)	411L63 020
RHR	1-3/4" (44mm)	411L62 016
	2" (51mm)	411L62 018
	2-1/4" (57mm)	411L62 020

To order with lockset, see Quick Codes, page 16. To order separately, specify Part No. x Door Thickness x Finish (e.g., 411L62 x 2" x 626).

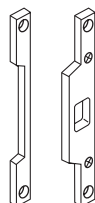


Rabbeted Front and Strike

Brass or bronze
For 1/2" (13mm) rabbet
No optional lip lengths

	Part No.	Hand
Latchbolt x Deadbolt	318F66	RH/LHR
	318F69	LH/RHR
Latchbolt only	318F64	RH/LHR
	318F67	LH/RHR
Deadbolt only	318F65	RH/LHR
	318F68	LH/RHR

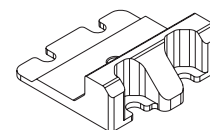
To order with lockset, see Quick Codes, page 16.
To order separately, specify Part No. x Finish (e.g., 318F66 x 626).



Kits

Positive Pull Stop Kit (HPSK)

Used on openings where weather stripping is installed or when door closers are not utilized, this kit prevents the latch from retracting when pulling door closed. Contains 2 wood screws, 2 machine screws and instructions. To order, specify 813F068.



Strikes/Kits

HP3000 Series Tubular Lock with Push/Pull Paddle Trim

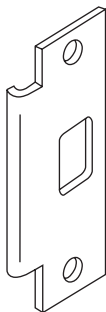
Strikes

ANSI Curved Lip

(Standard)

Stainless steel, 4-7/8" (124mm) x 1-1/4" (57mm) x 1-1/4" (57mm) lip to center.

To order with push/pull paddle trim, see Quick Codes, page 16. To order separately, specify 217L13 x Finish.



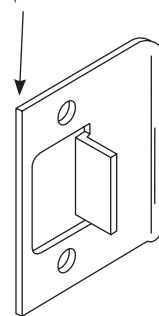
Full Lip Strike (SF114)

Brass, 2-1/4" (57mm) x 1-3/4" (44mm) x 1-1/4" (32mm) lip to center. No optional lip lengths.

To order separately specify 680L50M020 x Finish.

Anti-rattle tab.

Square Corners

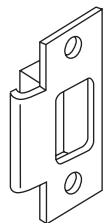


Curved Lip Box

(Optional)

Brass, 2-3/4" (70mm) x 1-1/8" (29mm) x 1-1/4" (57mm) lip to center.

To order with push/pull paddle trim, see Quick Codes, page 16. To order separately, specify 586L19 x Finish.



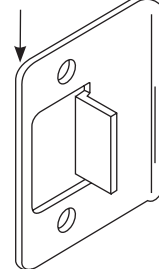
Full Lip Strike – 1/4" Radius Corners (SFR114)

Brass, 2-1/4" (57mm) x 1-3/4" (44mm) x 1-1/4" (32mm) lip to center. No optional lip lengths.

To order separately specify 680L51M020 x Finish.

Anti-rattle tab.

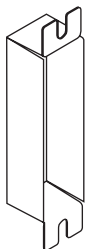
1/4" Radius Corners



ANSI Wrought Strike Box

To order with push/pull paddle trim, see Quick Codes, page 16.

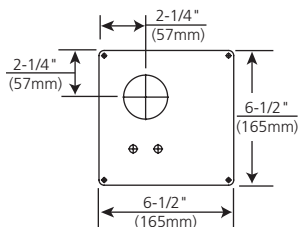
To order separately, specify 120F76.



Kits

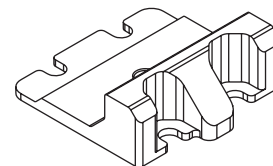
Kit for Retrofitting HP3000 Push/Pull Paddle Trim

Use to cover prep from HL10 series push/pull trim and other manufacturer's trim, when retrofitting HP3000 trim. Contains 2 retrofit plates and 8 screws. Available in 630 finish only. To order, specify 791F39.



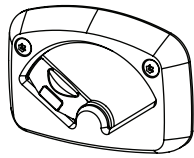
Positive Pull Stop Kit

Used on openings where weather stripping is installed or when door closers are not utilized, this kit prevents the latch from retracting when pulling door closed. Contains 2 wood screws, 2 machine screws and instructions. To order, specify 813F068.



Thumbturns

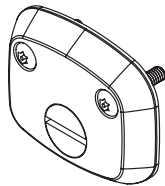
ML2000 and ML20900 Series with BHSS, BLSS, HSS, HPSK Trim



Thumbturn for BHSS, BLSS, HSS, HPSK*

Stainless steel. Used on functions utilizing a thumbturn. Sectional trim only. To order, see table.
Plate Size: 3-3/4" (95mm) x 2-1/2" (64mm)

Door Thickness	Packet
1-3/4" (44mm)	851F627
2" (51mm)	851F637
2-1/4" (57mm)	851F647



Emergency Turn for BHSS, BLSS, HSS, HPSK*

Stainless steel. Used on functions utilizing a thumbturn. Sectional trim only. To order, see table.
Plate Size: 3-3/4" (95mm) x 2-1/2" (64mm)

Door Thickness	Packet
1-3/4" (44mm)	851F677
2" (51mm)	851F687
2-1/4" (57mm)	851F697

*HPSK available for 1-3/4" door only.

How to Order

Stock Order

Quantity	Series/Function	Trim	Finish	Hand	Voltage	Misc. Options
100	ML20907	BLSS	630	RHR	12AD	M105
100	ML2010	BHSS	630	RHR	—	—
100	HP3000	HPSK	630	RHR	—	—

Contract / Detailed Order

Quantity	Keypad	Series/ Function	Trim	Finish	Hand	Voltage	Door Thickness	Optional Strike	Misc. Options	Optional Cylinder	Keying
24	AA1	ML2055	HPSK	630	RHR	—	D214	SA200	M26	C7	VKC3
24	AA1	ML20914	BHSS	630	RHR	12AD	—	—	M04	7P	VKC3

Anti-Harm Knob (HSS) Trim – Lever Trim x HSS Knob

Quantity	Series/Function	Trim		Finish	Hand
		Outside	Inside		
6	ML2055	NSA	HSS	630C	RH

Cylinder and Keying

Description	Specify
Conventional 6-pin	(standard)
Conventional 7-pin	7P
Less cylinder(s)	LC
IC 6-pin	C6
IC 6-pin with temporary construction core	
Red	CT6R
Blue	CT6B
Green	CT6G
IC 6-pin less core	CL6
SFIC 6-pin with SFIC disposable temporary core	CT6SD
SFIC 6-pin with Less Core ¹	CLS6
IC 7-pin	C7
IC 7-pin with temporary construction core	
Red	CT7R
Blue	CT7B
Green	CT7G
IC 7-pin less core	CL7
SFIC 7-pin with SFIC disposable temporary core	CT7SD
SFIC 7-pin with Less Core ¹	CLS7
Security	HS
Security IC	CHS
Access 3 [®] Patented Fixed Core	AP
Access 3 [®] Security Fixed Core	AS
Access 3 [®] High Security Fixed Core	AHS
Access 3 [®] Patented IC	ACP
Access 3 [®] Security IC	ACS
Access 3 [®] High Security IC	ACHS
Pyramid High Security Fixed Core	PHS
Pyramid High Security IC	PCHS
Pyramid IC Less Core	CLP
Pyramid with temporary construction core	CTP
Pyramid Security	PS
Pyramid Security IC	PCS
Pyramid Disposable Core	CTPD
6-Pin Disposable Core	CT6D
7-Pin Disposable Core	CT7D
Keyed random	KR
Construction master keyed (not available for Pyramid)	CMK

Cylinder and Keying (cont.)

Description	Specify
Visual key control	
- No keying data stamped on key or cylinder	VKCO
- Keys only	VKC1
- Cylinders and keys (not for HS, CHS, PHS or PCHS)	VKC2
- Cylinders only (not for HS, CHS, PHS or PCHS)	VKC3
Concealed key control (CKC)	
- CKC cylinders with VKC keys	CKC2
- CKC cylinders only (not for PHS or PCHS)	CKC3
2 keys per lock	(standard)
More than 2 keys	KY# (e.g., KY6)

1. Not available with ML2029.

Finishes

Description	Specify
ANSI/BHMA 630 (US32D)	Satin Stainless Steel 630
630C	Satin Stainless Steel with MicroShield [®] 630C

Door Thickness

Door Thickness	Specify
1-3/4" (44mm)	(standard)
2" (51mm)	D200
2-1/4" (57mm)	D214

ML2000 or ML20900 x HPSK available 1-3/4" door thickness only.
HP3000 not available with D214 option.

Backset - HP3000 Series (5" - Standard)

Description	Specify
5" (127mm)	(standard)
2-3/4" (70mm)	B234
7" (177mm)	B700

Quick Codes

Strikes - Mortise

ANSI Lip to Center	ANSI Straight Lip Specify	Curved Lip Specify
1-1/8" (29mm)	(standard)	SA118
1-1/4" (32mm)	SS114	SA114
1-3/8" (35mm)	SS138	SA138
1-1/2" (38mm)	SS112	SA112
1-3/4" (44mm)	SS134	SA134
2" (51mm)	SS200	SA200
2-1/4" (57mm)	SS214	SA214
2-1/2" (64mm)	SS212	SA212
2-3/4" (70mm)	SS234	SA234
3" (76mm)	SS300	SA300

Strikes - Tubular

Lip to Center	ANSI Curved Lip, Specify	Curved Lip Box, Specify	Full Lip, Specify
1" (25mm)	SA100	SC100	N/A
1-1/8" (29mm)	SA118	SC118	N/A
1-1/4" (32mm)	(standard)	SC114	SF114*
1-3/8" (35mm)	SA138	SC138	N/A
1-1/2" (38mm)	SA112	SC112	N/A
1-3/4" (44mm)	SA134	SC134	N/A
2" (51mm)	SA200	SC200	N/A
2-1/4" (57mm)	SA214	SC214	N/A
2-1/2" (64mm)	SA212	SC212	N/A
2-3/4" (70mm)	SA234	SC234	N/A
3" (76mm)	SA300	SC300	N/A

*Specify SFR114 for rounded corner.

Handing

Description	Specify
Right Hand	RH
Left Hand	LH
Right Hand Reverse	RHR
Left Hand Reverse	LHR

Fail Safe/Fail Secure

Description	Specify
Fail safe	SAF
Fail secure	SEC

Miscellaneous Options

Description	Specify
Spanner head screws	M02
Phillips head screws	(standard)
Torx® head screws	M04
Hex head screws (HP3000)	M05
Latch front, rounded corners (HP3000)	M13
ANSI wrought strike box	M17
Lead lining (HP3000)	M28
Lead lining (BHSS, BLSS, HSS, HPSK)	M29
Half trim (for ML2010, ML2020, ML2022, ML2024, ML2029, ML2030, ML2032, ML2052, ML2053, ML2055, ML2056, ML2057, ML2058, ML2059, ML2062, ML2065) (Supplied with inside trim only. Includes cylinder) ¹	M30
Working trim only ²	M31
"PUSH & PULL" Identification ³ (HPSK, HP3000)	M38
Tapered Cylinder Collar ¹	M111
Latch hold back (for ML2042, ML2052, ML2055, ML2051, ML2057 only) ⁴	LHB

1. Available on HPSK trim only

2. HSS must be ordered complete with lockbody from the factory. HPSK trim only available for lockbody manufactured after January 2017. BLSS trim only available for lockbody manufactured after July 2008

3. Non-handed

4. Must use A02 cam when LHB is specified

Electric Monitor Options (ML20900 Series Only)

Description	Specify
Latchbolt Monitor	M91
Request to Exit	M92
Security Monitor	M105

These options may be ordered together only as follows: M91xM92, M92xM105.

Electric Accessories

Description	Specify
Power supply 1.0 Amp @ 12 VDC output	BPS-12-1
Power supply 3.0 Amp @ 12 VDC output	BPS-12-3
Power supply 1.0 Amp @ 24 VDC output	BPS-24-1
Power supply 2.0 Amp @ 24 VDC output	BPS-24-2
Power supply 4.0 Amp @ 24 VDC output	BPS-24-4

Architectural Specifications

ML2000 Series Mortise Locks with BHSS and BLSS Trim

1. Ligature Resistant, Mortise: ANSI/BHMA A156.13, Series 1000, Operational and Security Grade 1 mortise type manufactured to accepted OMH requirements with ligature-resistant lever and escutcheon trim. Locksets to be manufactured with a corrosion resistant, formed steel case. Levers and escutcheons are manufactured from stainless steel material. Provide optional lead-lining (lock body), Torx® fasteners, and Antimicrobial coating as specified in Hardware Sets.
 - A. Acceptable Manufacturers:
 1. Sargent Manufacturing (SA) – 8200 BHW Series
 2. Corbin Russwin (RU) – ML2000 BHSS Series
 3. Accurate Lock (AC) – CP Crescent Pull Series (with Teflon pad)
 2. Ligature Resistant, Mortise: ANSI/BHMA A156.13, Series 1000, Operational and Security Grade 1 mortise type manufactured to [accepted] [Use with caution] OMH requirements with ligature-resistant lever and rose trim. Locksets to be manufactured with a corrosion resistant, formed steel case. Levers and roses are manufactured from stainless steel material. Provide optional lead-lining (lock body), Torx® fasteners, and Antimicrobial coating as specified in Hardware Sets.
 - B. Acceptable Manufacturers:
 1. Sargent Manufacturing (SA) - 8200 BHL Series
 2. Corbin Russwin (RU) – ML2000 BLSS Series
 3. Best Lock (BE) – SPSL Series
 4. Town Steel (TS) – MRX-L Series

ML2000 and ML20900 Series (HPSK) Mortise Locks with Push/Pull Paddle Trim

1. All locksets shall be ML2000 Series Mortise Locksets as manufactured by Corbin Russwin Architectural Hardware, Berlin, CT.
2. Locks shall meet or exceed the requirements of ANSI/BHMA A156.13 Series 1000, Operational Grade 1, and Security Grade 1 with all standard trims.
3. Locks shall be easily re-handed without opening the lock body.
4. Locks required for fire doors shall be listed by Underwriters Laboratories for ratings of A label (3 hours) and less, for doors up to 4'0" (1.2m) x 10'0" (3.05m) and pairs of doors 8'0" (2.4m) x 10'0" (3.05m)
5. Construction:
 - A. Lock functions shall be manufactured in a single-sized case formed from 12 gauge steel minimum.
 - B. Lock cases shall be closed on all sides and back.
 - C. Locks shall have field adjustable, beveled, armored front, with a 1/8" (3mm) thickness minimum.
 - D. Locks shall have a one piece, 3/4" (19mm) throw anti-friction stainless steel latch.
 - E. Deadbolts, where specified, shall be full one inch (25mm) throw made of one-piece hardened stainless steel.
6. Lockset paddles shall be capable of horizontal or vertical mounting positions.
7. Locks shall have a 2-3/4" (70mm) backset, standard.
8. Strikes shall be non-handed with a curved lip.
9. Locks shall have brass 6-Pin cylinder, standard.
10. Locks shall have a 10 year limited warranty. 2 year limited warranty on electrified locks.

HP3000 Series Tubular Lock with Push/Pull Paddle Trim

1. Tubular hospital locks shall be HP3000 series as manufactured by Corbin Russwin Architectural Hardware, Berlin, CT.
2. Locks shall meet or exceed requirements of ANSI/BHMA A156.2 Series 4000 Grade 1.
3. Locks shall be easily re-handed with a non-handed curved lip strike.
4. Locks shall be listed for use on 3 hour fire doors (4' x 8' single and smaller doors).
5. Locks shall comply with UL10C and UBC 7-2 positive pressure requirements.
6. Lockset paddles shall be capable of horizontal or vertical mounting positions.
7. Locks shall have 2-3/4", 5" or 7" backset available.
8. Locks shall have one-year limited warranty.

The ASSA ABLOY Group is the global leader in access solutions. Every day, we help billions of people experience a more open world.

ASSA ABLOY Opening Solutions leads the development within door openings and products for access solutions in homes, businesses and institutions. Our offering includes doors, frames, door and window hardware, mechanical and smart locks, access control and service.



For additional information, contact your
ASSA ABLOY Door Security Solutions
sales consultant or visit www.corbinruswin.com.

In U.S.

Corbin Russwin
225 Episcopal Road
Berlin, CT 06037
Phone: 800-543-3658
Fax: 800-447-6714
www.corbinruswin.com

In Canada

ASSA ABLOY Door
Security Solutions Canada
160 Four Valley Drive
Vaughan, Ontario
Canada L4K 4T9
Phone: 800-461-3007
Fax: 800-461-8989
www.assaabloydss.ca

MicroShield®

As part of their promise to provide innovative solutions to their customers, certain ASSA ABLOY Group brands offer the MicroShield® technology, a silver-based antimicrobial coating designed to inhibit the growth of bacteria.

MicroShield® is a registered trademark of ASSA ABLOY Access and Egress Hardware Group, Inc.



The Agion antimicrobial is not intended as a substitute for good hygiene. Coated products must still be cleaned to ensure the surfaces will be free of destructive microbes. ASSA ABLOY makes no representations or warranties, express or implied, as to the efficacy of the Agion antimicrobial. A copy of the Agion warranty is available upon request. Agion is a registered trademark of Agion Technologies, Inc., Wakefield, MA, USA