

# FlashShip<sup>®</sup>

Product Catalog



**ASSA ABLOY**  
Opening Solutions

Experience a safer  
and more open world

ASSA ABLOY ACCENTRA | MCKINNEY | NORTON RIXSON | PEMKO | ROCKWOOD

# FlashShip® Program Information

The ASSA ABLOY FlashShip program allows the convenience of placing a single order for hundreds of different products from ASSA ABLOY, shipping from one of our ten FlashShip locations within 24 hours!

The FlashShip program currently offers hardware providers the most comprehensive one-stop selection available, with > 1,200 high-demand products that are delivered via 24 hour shipping from one of nine warehouses in the U.S. Customers in all 50 states are able to take advantage of the program.

FlashShip provides a 99 percent on-time fill rate, meaning products are shipped within 24 hours 99 percent of the time. The program also allows for a 30-day grace period on orders. If a customer orders something in error, they can return it within 30 days with no restocking fee.\*

In addition to supporting quick shipping, the FlashShip program drastically reduces inventory pressure experienced by many hardware vendors, and shipping is free on orders of \$2,000 or more.



## HOW TO PLACE AN ORDER

To place a qualifying order for the FlashShip program:

- A. Enter FlashShip order via [FlashShip WebShop](#).
- B. Use the “FlashShip Order Form” on pages 61-62 and indicate product by FlashShip part number as stated in the FlashShip catalog, or
  - E-mail your purchase order to [flashship@assaabloy.com](mailto:flashship@assaabloy.com)
  - Also, products must be indicated by their FlashShip part number or by exact model number for available product configurations in the current FlashShip program book.

## Lead Time

Lead time is 24 hours from receipt of order. We reserve the right to limit quantities. Only items printed in this current publication will be given 24 hour lead times for shipping.

## Part Numbers

Specific part numbers are assigned to each unique configuration. These FlashShip part numbers should be included on the purchase order to ensure ease of processing.

## Mixed Orders

To ensure expedited processing, FlashShip products must be submitted on a separate purchase order from non-FlashShip products. Any orders received including items that are not currently published in the FlashShip offering will be returned to the customer for re-submittal.

\*Returns over \$5,000 are subject to review and potential restocking fees consistent with ASSA ABLOY ACCENTRA™ policies.



04

**FlashShip®**

Contact Information  
Digital Tools  
Terms & Conditions

---

07

**ACCENTRA**

Product Comparison Charts  
Mortise Locks & Cylinders  
Cylindrical Locks  
Cylindrical Deadbolts  
Exit Devices  
Exit Device Trim, Mullions & Cylinders  
Door Closers  
nexTouch® Keypad Locks

35

**McKinney**

Spring Hinges  
3 & 5 Knuckle Hinges  
MacPro® and ElectroLynx® Hinges

---

39

**Pemko-Markar**

Markar Stainless Steel Pin & Barrel Continuous Hinges  
Thresholds  
Door Shoes, Jamb Sets, Sweeps & Astragals  
Rain Drips, Automatic Door Bottoms, & Aluminum Geared Continuous Hinges  
Adhesive Gaskets

---

49

**Rockwood**

Push & Pull Plates

**Rockwood (cont).**

Door Pulls, Lock Protectors & Door Stops  
Flush Bolts, Dust Proof Strikes, Surface Bolts, Roller Latches, Door Guards  
Silencers, Knockers, Coat Hooks, Misc. Pulls, Coordinators & Flush Bolts  
Lite Kits

---

58

**Norton Rixson**

Door Closers  
Low Energy Door Operators  
Pivots & Pivot Sets  
Checkmate® Stops & Holders  
Electromagnetic Door Holder/Releases

---

62

**Order Forms**



# Contacts

## Customer Service

For FlashShip customer service: 800-438-1951 or [CustomerService.FlashShip@assaabloy.com](mailto:CustomerService.FlashShip@assaabloy.com)

## Hours of Operation

Customer Service: 8:00 am – 4:30 pm EST

## ASSA ABLOY Service Centers

FlashShip products are fully stocked at your local service center, which brings doors, frames and hardware closer to you and your job sites.

### FlashShip WebShop Training

Would you like to request a more in-depth training on FlashShip WebShop for you or your team? We are happy to provide one-on-one training! For more information or to schedule your training, please contact the FlashShip team at [flashship@assaabloy.com](mailto:flashship@assaabloy.com).

## Technical Product Support

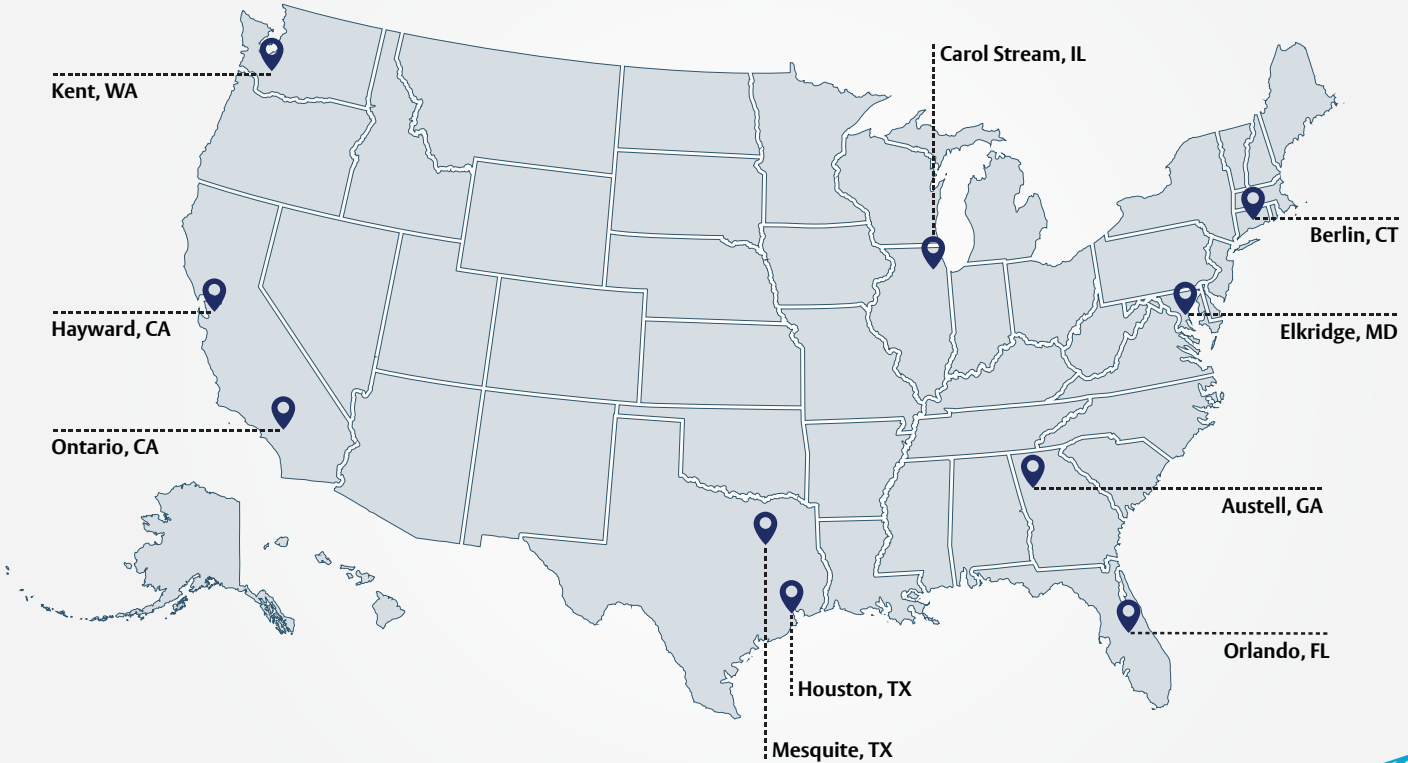
For technical questions and/or issues with products, please contact the brands' technical support:

Brand	Hours of Operation	Toll-Free
McKinney	8:00am - 7:30pm EST Mon. - Thurs. 8:00am - 5:00pm EST Fri.	877-747-6845
Markar/Pemko	7:00am - 7:00pm CST Mon. - Thurs. 8:00am - 5:00pm CST Fri.	877-747-6845
Norton Rixson	8:00am - 7:30pm EST Mon. - Thurs. 8:00am - 5:00pm EST Fri.	877-974-2255
Rockwood	8:00 am - 7:00 pm EST Mon.-Thurs. 8:00 am - 5:00 pm EST Fri.	877-747-6845
ACCENTRA	8:00am - 7:30pm EST Mon. - Thurs. 8:00am - 5:00pm EST Fri.	855-557-5078

# FlashShip Territories

**ASSA ABLOY**

**FlashShip®**



Experience a safer  
and more open world



# FlashShip® WebShop

Place your order on our convenient, easy to use FlashShip WebShop! Styled after the eCommerce sites you're already familiar with, FlashShip WebShop makes ordering your favorite door hardware products easier than ever before.

## Features

- FlashShip WebShop saves you time and simplifies ordering. Select your product, view your price, click purchase and your order is processed!
- Each product listing on WebShop is accompanied by a high resolution image to ensure you're ordering exactly the right product you need.
- FlashShip WebShop features the ability to search for exact keywords, or filter down by brand and product type to browse through hundreds of items
- Quick and efficient checkout makes placing orders through the FlashShip WebShop easy. Save your payment information for future purchases!
- FlashShip Webshop remembers your common orders, making it easy to order the same products you need with a few clicks!

Would you like more in-depth training on FlashShip WebShop? Please contact the FlashShip team at [flashship@assaabloy.com](mailto:flashship@assaabloy.com) to schedule one-on-one training for you or your team!



Visit  
[flashship.assaabloy.com](http://flashship.assaabloy.com)  
to start ordering today!

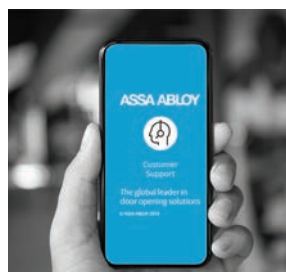
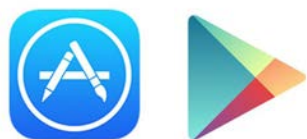
## Digital Tools

### Customer Support App

Connect with an ASSA ABLOY Customer Service or Technical Product Support representative right from your mobile device! The ASSA ABLOY Customer Support App can be downloaded on your mobile device from the App Store or Google Play and provide you access to:

- Live Chat with a Customer Service or Technical Product Support representative
- Live interactive video for technical troubleshooting
- Access ASSA ABLOY Connect system for order history or order status updates

Download the app today!



### ASSA ABLOY Conversion Tool

Quickly convert competitor part numbers to products offered by ASSA ABLOY Architectural Door Accessories and ACCENTRA products with the ASSA ABLOY Conversion Tool!

Visit today at [www.convert2accessories.com](http://www.convert2accessories.com)  
[www.convert2accentra.com](http://www.convert2accentra.com)



# FlashShip® Terms and Conditions

## Quotes

Quoted projects do not qualify for the FlashShip® program. Standard buying program discounts only.

## Freight

All orders are shipped FOB factory/warehouse, except as expressly provided below. When delivered to the Transportation Company, the Purchaser assumes the risk of loss or damage in transit.

Customer orders with net product value in excess of \$2,000 for the United States will be shipped prepaid by the ASSA ABLOY carrier of choice to a single destination point in the United States.

A minimum freight and handling charge of \$10.00 will be charged on orders with net product value of \$250.00 or less.

For orders with net product value greater than \$250.00 and less than \$2,000.00, freight charges will be calculated as a percentage of the net invoice value and will be added to Customer's invoice. The percentage is based on the National U.S. Average On Highway Diesel Fuel Prices as reported by the US Department of Energy in effect at the beginning of each quarter. On the first Monday of each quarter, the new rate will be published on the ASSA ABLOY Door Security Solutions extranet and will go into effect on the 2nd Monday of the quarter. Please refer to the ASSA ABLOY distributor extranet for the rate chart and information on the current freight charge percentage. The percentage in effect at the time of shipment of the order will be charged.

Expedited shipping options – If the customer requests an expedited method of shipment such as "Next Day Air" the charges will be prepaid by ASSA ABLOY and the full rate for the service, as published by the carrier, will be added to the customer's invoice.

Signature required - If the customer requires a signature, the charges for shipping and signature service will be prepaid by ASSA ABLOY and the full rate for the shipping and signature service, as published by the carrier, will be added to the customer's invoice.

Packing – ASSA ABLOY will pack, mark and ship the products according to its standard procedures for shipment.

## Delivery

Orders will be acknowledged and given a scheduled delivery date. Complete information is required to process all orders. Orders with insufficient information for processing (i.e. part numbers) may be subject to extended lead times which are relative to the time required in obtaining the necessary information for order processing.

ACCENTRA will not be liable for back charges incurred based on availability of product or as a result of delays in delivery caused by insufficient information required to process an order. ACCENTRA will not be held responsible for delays in delivery caused by strikes, fires, floods or any other causes beyond our control, including the delivery of material to us. Under no circumstances shall ACCENTRA be liable or accountable for consequential damages due to failure of delivery.

## Changes/Cancellations

Due to the promptness of delivery, no changes or cancellations can be accepted.

## Prices

All shipments will be made at prices prevailing at time of shipment.

## Terms

Invoices dated the 1st through the 15th will be due for 2% discount on the 10th of the following month. Invoices dated the 16th through the 31st will be due for 2% discount on the 25th of the following month. Net immediately thereafter.

## Returned Goods

FlashShip products returned as "Goodwill" must meet the following criteria to be considered a return:

- Be in original, unmarked and undamaged cartons.
- Shipped and invoiced within the previous 30 days.
- After 30 days, returns in original, unmarked and undamaged cartons will be subject to 45% reprocessing fee

No restocking fee will apply. \*Upon receipt and verification that the returned merchandise meets the foregoing conditions, a credit will be issued for the original invoice amount.

\*Returns over \$5,000 are subject to review and potential restocking fees consistent with ACCENTRA policies.

Customer is responsible for freight on all "Goodwill" returned product.

*Consult the current Price Books for pricing information and a complete list of Terms & Conditions.*

*Master key product is not subject to return due to customization of master keyed products.*

## Warranties

All standard limited warranties apply. Consult current Price Books for a complete list of warranty information.

**ASSA ABLOY**  
Opening Solutions

Experience a safer  
and more open world





### Exit Trim

Easily retrofits onto existing exit devices, including competitor models

### Cylindrical

Great for restrooms, storage closets, and offices

### Sectional Mortise

Offered in a variety of decorative levers for multi-family applications and more

## One Lock Platform | Any Opening

ACCENTRA nexTouch Keypad Locks are your go-to lock for an easy upgrade from mechanical hardware to basic electronic access control. With its reliable cylindrical, sectional mortise, and exit trim platforms, nexTouch can increase security and add convenient traffic control to any commercial or multi-family building.

For retrofit projects, new construction, and anything in between, between, ACCENTRA Works for You<sup>SM</sup>.

Fax 877-888-2772, email [flashship@assaabloy.com](mailto:flashship@assaabloy.com) or use  
Online Order Entry at [www.assaabloydss.com/extranet](http://www.assaabloydss.com/extranet) by clicking the FlashShip® icon  
*Note: FlashShip® reserves the right to limit quantities.*

Copyright © 2017-2024, ASSA ABLOY Door Security Solutions, an ASSA ABLOY Group company. All rights reserved.  
Reproduction in whole or in part without the express written permission of ASSA ABLOY Door Security Solutions is prohibited.

**ASSA ABLOY**  
Opening Solutions

Experience a safer  
and more open world

Visit the ASSA ABLOY Conversion Tool at  
[www.convert2accentra.com!](http://www.convert2accentra.com!)

**Competitive Comparison Charts**

Mortise Lock Comparison						
ACCENTRA	Cal-Royal	Dorma	Falcon	Hager	PDQ	Stanley Commercial
8800FL	M8000	ML9000	M	3800	MR	QMS100

Grade 1 Cylindrical Lock Comparison						
ACCENTRA	Cal-Royal	Dorma	Falcon	Hager	PDQ	Stanley Commercial
4700LN	CGN	CL800	K/T	3400	GT	QCL100

Grade 2 Cylindrical Lock Comparison						
ACCENTRA	Cal-Royal	Dorma	Falcon	Hager	PDQ	Stanley Commercial
4600LN	SL	C500	B/W	3500	GP/SA	QCL200

Deadbolt Comparison							
	ACCENTRA	Cal-Royal	Dorma	Falcon	Hager	PDQ	Stanley Commercial
Grade 1	D100	CRB	D800	D100	3100	KT100	QDB100
Grade 2	D200	T	DB600	D200	3200	KV100	QDB200

Grade 1 Industrial Closer Comparison						
ACCENTRA	Cal-Royal	Dorma	Falcon	Hager	PDQ	Stanley Commercial
1100BF	300	7400	SC61	5300	3100	QDC100

Grade 1 Architectural Closer Comparison						
ACCENTRA	Cal-Royal	Dorma	Falcon	Hager	PDQ	Stanley Commercial
2700	N900	8600	SC81	5200	5300	QDC200

Grade 1 Cast Iron Door Closer Comparison						
ACCENTRA	Cal-Royal	Dorma	Falcon	Hager	PDQ	Stanley Commercial
5800	CR441	8900	SC71	5100	7400	QED100

Grade 1 Commercial Exit Device Comparison						
ACCENTRA	Cal-Royal	Dorma	Falcon	Hager	PDQ	Stanley Commercial
1800	2200	8300	19	4700	4200	QED300

Grade 1 Commercial Exit Device Comparison - Stainless Steel						
ACCENTRA	Cal-Royal	Dorma	Falcon	Hager	PDQ	Stanley Commercial
2100	9800	NA	4700	4200	GP/SA	QED100

**ASSA ABLOY**  
Opening Solutions

Experience a safer  
and more open world

Fax 877-888-2772, email [flashship@assaabloy.com](mailto:flashship@assaabloy.com) or use  
Online Order Entry at [www.assaabloydss.com/extranet](http://www.assaabloydss.com/extranet) by clicking the FlashShip® icon

*Note: FlashShip® reserves the right to limit quantities.*

Copyright © 2017-2024, ASSA ABLOY Door Security Solutions, an ASSA ABLOY Group company. All rights reserved.  
Reproduction in whole or in part without the express written permission of ASSA ABLOY Door Security Solutions is prohibited.



For small masterkeyed systems of 50 changes or less, the FlashShip® Masterkeying program offers a way to get ACCENTRA masterkeyed products in a flash!

- Only orders for new Masterkey systems in PARA keyway will be accepted
- Offered for product in 626 or 630 finishes; all cylinders provided in 626
- Products must be ordered online through FlashShip in Berlin, CT

The factory will maintain detailed project and distributor information in the Key Records department based on the Masterkey Registry number.

Please note masterkeyed cylinders are not installed in locksets prior to shipping.

### 8800FL Series Mortise Locks - Masterkeyed

#### Sectional Trim - Single Cylinder Functions

Function	Finish	Trim	Cylinder	Keyway	Keying	Strike	Collar	FlashShip® #
<b>8805FL Storeroom</b>								
8805FL	626	AUR	2153	PARA	MK	2815	1765.250	085992
8805FL	626	PBR	2153	PARA	MK	2815	1765.250	085993
<b>8807FL Entry</b>								
8807FL	626	AUR	2153	PARA	MK	2815	1765.250	085994
8807FL	626	PBR	2153	PARA	MK	2815	1765.250	085995
<b>8808FL Classroom</b>								
8808FL	626	AUR	2153	PARA	MK	2815	1765.250	085996
8808FL	626	PBR	2153	PARA	MK	2815	1765.250	085997
<b>8822FL Dormitory</b>								
8822FL	626	AUR	2153	PARA	MK	2815	1765.250	085998
8822FL	626	PBR	2153	PARA	MK	2815	1765.250	085999
<b>8847FL Apartment</b>								
8847FL	626	AUR	2153	PARA	MK	2815	1765.250	086000
8847FL	626	PBR	2153	PARA	MK	2815	1765.250	086001

#### Escutcheon Trim - Single Cylinder Functions

Function	Finish	Trim	Cylinder	Keyway	Keying	Strike	FlashShip® #
<b>8805FL Storeroom</b>							
8805FL	626	AUCN	2153	PARA	MK	2815	086002
<b>8807FL Entry</b>							
8807FL	626	AUCN	2153	PARA	MK	2815	086003
<b>8808FL Classroom</b>							
8808FL	626	AUCN	2153	PARA	MK	2815	086004
<b>8822FL Dormitory</b>							
8822FL	626	AUCN	2153	PARA	MK	2815	086005
<b>8847FL Apartment</b>							
8847FL	626	AUCN	2153	PARA	MK	2815	086006

### Key-in-Lever Cylindrical Masterkeyed Locks

#### 4700LN Series Grade 1 Locks

Function	Finish	Lever	Cylinder	Keyway	Keying	Strike	Latch	Adapter Sleeves	FlashShip® #
<b>4705LN Storeroom</b>									
4705LN	626	AU	1803-47L	PARA	MK	497	694	14-5305-9078-999	085967
<b>4707LN Entry</b>									
4707LN	626	AU	1803-47L	PARA	MK	497	694	14-5305-9078-999	085970
<b>4708LN Classroom</b>									
4708LN	626	AU	1803-47L	PARA	MK	497	694	14-5305-9078-999	085973
4708LN	626	PB	1803-47L	PARA	MK	497	694	14-5305-9078-999	085974
4708LN	626	MO	1803-47L	PARA	MK	497	694	14-5305-9078-999	085975

Fax 877-888-2772, email [flashship@assaabloy.com](mailto:flashship@assaabloy.com) or use Online Order Entry at [www.assaabloydss.com/extranet](http://www.assaabloydss.com/extranet) by clicking the FlashShip® icon

Note: FlashShip® reserves the right to limit quantities.

Copyright © 2017-2024, ASSA ABLOY Door Security Solutions, an ASSA ABLOY Group company. All rights reserved. Reproduction in whole or in part without the express written permission of ASSA ABLOY Door Security Solutions is prohibited.

**ASSA ABLOY**  
Opening Solutions

Experience a safer  
and more open world

## ACCENTRA

## ASSA ABLOY

## 4600LN Series Grade 2 Locks

Function	Finish	Lever	Cylinder	Keyway	Keying	Strike	Latch	Adapter Sleeves	FlashShip® #
<b>4605LN Storeroom</b>									
4605LN	626	AU	1806	PARA	MK	497	MCD234	NA	085976
4605LN	626	PB	1806	PARA	MK	497	MCD234	NA	085977
4605LN	626	MO	1806	PARA	MK	497	MCD234	NA	085978
<b>4607LN Entry</b>									
4607LN	626	AU	1806	PARA	MK	497	MCD234	NA	085979
4607LN	626	PB	1806	PARA	MK	497	MCD234	NA	085980
4607LN	626	MO	1806	PARA	MK	497	MCD234	NA	085981
<b>4608LN Classroom</b>									
4608LN	626	AU	1806	PARA	MK	497	MCD234	NA	085982
4608LN	626	PB	1806	PARA	MK	497	MCD234	NA	085983
4608LN	626	MO	1806	PARA	MK	497	MCD234	NA	085984

D Series Cylindrical Deadbolts - Masterkeyed  
D100 Grade 1

Function	Finish	Cylinder	Keyway	Keying	Strike	Latch	FlashShip® #
<b>Cylinder x Thumbturn</b>							
D112	626	1807	PARA	MK	D243	D34	085985
<b>Double Cylinder</b>							
D122	626	1807	PARA	MK	D243	D34	085986
<b>D200 Grade 2</b>							
<b>Cylinder x Thumbturn</b>							
D212	626	1808	PARA	MK	D243	D34	085987
<b>Double Cylinder</b>							
D222	626	1808	PARA	MK	D243	D34	085988

## Key-in-Lever Exit Device Trim - Masterkeyed

Classroom Function Trim	Finish	Lever	Cylinder	Keyway	Keying	Adapter Sleeves	FlashShip® #
446F	626	AU	1802	PARA	MK	14-5305-9078-999	085990

## Escutcheon x Lever Exit Device Trim - Masterkeyed

Classroom Function Trim	Finish	Lever	Cylinder	Keyway	Keying	Collar	FlashShip® #
426F	630	AU	1109	PARA	MK	1765.250	086007

## Cylinders

Cylinder	Finish	Cylinder	Keyway	Keying	Collar	FlashShip® #
Mortise Cylinder	626	2153	PARA	MK	1765.250	085933
Rim Cylinder	626	1109	PARA	MK	1765.250	085934

Model #	Description	Key Section	FlashShip® #	Approx. Wt. Each (Lbs)
<b>Keyblanks</b>				
RN11 - Masterkeyed	6-pin Cut Key	PARA	085941	.01**

\*\*Existing systems only, must provide registry number

**ASSA ABLOY**  
Opening Solutions

Experience a safer  
and more open world

Fax 877-888-2772, email flashship@assaabloy.com or use  
Online Order Entry at [www.assaabloydss.com/extranet](http://www.assaabloydss.com/extranet) by clicking the FlashShip® icon

Note: FlashShip® reserves the right to limit quantities.

Copyright © 2017-2024, ASSA ABLOY Door Security Solutions, an ASSA ABLOY Group company. All rights reserved.  
Reproduction in whole or in part without the express written permission of ASSA ABLOY Door Security Solutions is prohibited.



Augusta - AUR



Pacific Beach - PBR

Design	Model #	Finish	Hand	Strike	Cylinder	FlashShip® #	Approx. Wt. Each (Lbs)
<b>8801FL - Passage or Closet Latch</b>							
AUR	8801FL	626	RH	2815	—	085015	6
PBR	8801FL	626	RH	2815	—	085016	6
<b>8802FL - Privacy, Bedroom or Bath Lock</b>							
AUR	8802FL	626	RH	2815	—	085017	6
PBR	8802FL	626	RH	2815	—	085018	6
<b>8805FL - Storeroom or Closet Lock</b>							
AUR	8805FL	626	RH	2815	Less Cylinder	085019	6
PBR	8805FL	626	RH	2815	Less Cylinder	085020	6
<b>8807FL - Entry Lock</b>							
AUR	8807FL	626	RH	2815	Less Cylinder	085021	6
PBR	8807FL	626	RH	2815	Less Cylinder	085022	6
<b>8808FL - Classroom Lock</b>							
AUR	8808FL	626	RH	2815	Less Cylinder	085023	6
PBR	8808FL	626	RH	2815	Less Cylinder	085024	6
<b>8822FL - Dormitory or Exit Lock</b>							
AUR	8822FL	626	RH	2815	Less Cylinder	085025	7
PBR	8822FL	626	RH	2815	Less Cylinder	085026	7
<b>8847FL - Apartment Corridor Door Lock</b>							
AUR	8847FL	626	RH	2815	Less Cylinder	085027	7
PBR	8847FL	626	RH	2815	Less Cylinder	085028	7

Fax 877-888-2772, email [flashship@assaabloy.com](mailto:flashship@assaabloy.com) or use  
 Online Order Entry at [www.assaabloydss.com/extranet](http://www.assaabloydss.com/extranet) by clicking the FlashShip® icon  
 Note: FlashShip® reserves the right to limit quantities.

Copyright © 2017-2024, ASSA ABLOY Door Security Solutions, an ASSA ABLOY Group company. All rights reserved.  
 Reproduction in whole or in part without the express written permission of ASSA ABLOY Door Security Solutions is prohibited.

**ASSA ABLOY**  
 Opening Solutions

Experience a safer  
 and more open world

**ACCENTRA**  
**ASSA ABLOY**



Augusta - AU x CN

Design	Model #	Finish	Hand	Strike	Cylinder	FlashShip® #	Approx. Wt. Each (Lbs)
<b>8801FL - Passage or Closet Latch</b>							
AUCN	8801FL	626	RH	2815	—	085330	6.5
<b>8802FL - Privacy, Bedroom or Bath Lock</b>							
AUCN	8802FL	626	RH	2815	—	085331	7.5
<b>8805FL - Storeroom or Closet Lock</b>							
AUCN	8805FL	626	RH	2815	Less Cylinder	085332	7.5
<b>8807FL - Entry Lock</b>							
AUCN	8807FL	626	RH	2815	Less Cylinder	085333	7.5
<b>8808FL - Classroom Lock</b>							
AUCN	8808FL	626	RH	2815	Less Cylinder	085334	7.5
<b>8822FL - Dormitory or Exit Lock</b>							
AUCN	8822FL	626	RH	2815	Less Cylinder	085335	7.5
<b>8847FL - Apartment Corridor Door Lock</b>							
AUCN	8847FL	626	RH	2815	Less Cylinder	085336	7.5

**ASSA ABLOY**  
Opening Solutions

Experience a safer  
and more open world

Fax 877-888-2772, email [flashship@assaabloy.com](mailto:flashship@assaabloy.com) or use  
Online Order Entry at [www.assaabloydss.com/extranet](http://www.assaabloydss.com/extranet) by clicking the FlashShip® icon

*Note: FlashShip® reserves the right to limit quantities.*

Copyright © 2017-2024, ASSA ABLOY Door Security Solutions, an ASSA ABLOY Group company. All rights reserved.  
Reproduction in whole or in part without the express written permission of ASSA ABLOY Door Security Solutions is prohibited.



## Mortise Cylinders and Keyblanks

Model #	Description	Key Section	Finish	Collar Size Included	FlashShip® #	Approx. Wt. Each (Lbs)
<b>Mortise Cylinders</b>						
2153 x 1-1/8"	6-Pin, Keyed Random	PARA	613E	1765.250	085396	0.4
2153 x 1-1/8"	6-Pin, Keyed Random	PARA	626	1765.250	085000	0.4
2553 x 1-1/8"	6-Pin, Schlage® Keyed Random	C	613	1765.250	085420	0.4
2553 x 1-1/8"	6-Pin, Schlage® Keyed Random	C	626	1765.250	085001	0.4
<b>Mortise Cylinders (LFIC)</b>						
2196 x 1-1/2"	LFIC, 6-Pin, 0-Bitted	GA	626	1765.656	086577	1
2221 x 1-1/2"	LFIC, 6-Pin, 0 Bitted	—	626	1765.656	086555	1
2196 x 1-1/2"	LFIC, 6-Pin, 0-Bitted	PARA	626	1765.656	086578	1
<b>Mortise Housings</b>						
K660 x 1-3/8"	SFIC Housing Only, Less Core	—	613E	1765.563	085421	0.4
K660 x 1-3/8"	SFIC Housing Only, Less Core	—	626	1765.563	085002	0.4
<b>Interchangeable Cores (Large Format)</b>						
1210	Core Only, 6-Pin, 0-Bitted	GA	626	—	086563	0.3
1210	Core Only, 6-Pin, 0-Bitted	PARA	626	—	086564	0.3
<b>Miscellaneous</b>						
—	Cylinder Ring	—	626	1765.156	086570	0.1
—	Cylinder Ring	—	626	1765.219	086571	0.1
—	Cylinder Ring	—	626	1765.250	086569	0.1
—	Cylinder Ring	—	626	1765.656	086568	0.1
—	Cylinder Ring	—	626	KP4	086599	0.1
<b>Keyblanks</b>						
RN11	6-Pin Blank	PARA		085006		0.1*
RN11 - Masterkeyed	6-pin Cut Key	PARA		085941		.01**

\*Minimum quantity of 50

\*\*Existing systems only, must provide registry number

Fax 877-888-2772, email [flashship@assaabloy.com](mailto:flashship@assaabloy.com) or use  
 Online Order Entry at [www.assaabloydss.com/extranet](http://www.assaabloydss.com/extranet) by clicking the FlashShip® icon

Note: FlashShip® reserves the right to limit quantities.

Copyright © 2017-2024, ASSA ABLOY Door Security Solutions, an ASSA ABLOY Group company. All rights reserved.  
 Reproduction in whole or in part without the express written permission of ASSA ABLOY Door Security Solutions is prohibited.

**ASSA ABLOY**  
 Opening Solutions

Experience a safer  
 and more open world

# YPL Series Grade 1 Cylindrical Status Indicator Lock

**ACCENTRA**

**ASSA ABLOY**



YPL02 - Unlocked



YPL02 - Locked

Design	Model #	Finish	Strike	Latch	FlashShip® #	Approx. Wt. Each (Lbs)
<b>YPL02 - Privacy Lock</b>						
AU	YPL02	626	497	693A	086703	4.5
AU	YPL02	BSP	497	693A	086704	4.5
AU	YPL02	613E	497	693A	086720	4.5

Model #	Description	Finish	FlashShip® #	Approx. Wt. Each (Lbs)
378PL	2-3/8" Backset Latch, Square Corner, 1" Front	630	086705	1
APK-2	Adapter Plate Kit for 1-3/8" Door (set of 2 plates)	Black	086706	1

**ASSA ABLOY**  
Opening Solutions

Experience a safer  
and more open world

Fax 877-888-2772, email [flashship@assaabloy.com](mailto:flashship@assaabloy.com) or use  
Online Order Entry at [www.assaabloydss.com/extranet](http://www.assaabloydss.com/extranet) by clicking the FlashShip® icon

*Note: FlashShip® reserves the right to limit quantities.*

Copyright © 2017-2024, ASSA ABLOY Door Security Solutions, an ASSA ABLOY Group company. All rights reserved.  
Reproduction in whole or in part without the express written permission of ASSA ABLOY Door Security Solutions is prohibited.



Augusta - AU

Design	Model #	Finish	Strike	Cylinder	FlashShip® #	Approx. Wt. Each (Lbs)
<b>5401LN - Passage or Closet Latch</b>						
AU	5401LN	626	497 ANSI	—	086536	4
<b>5402LN - Privacy, Bedroom or Bath Lock</b>						
AU	5402LN	626	497 ANSI	—	086537	4
<b>5405LN - Storeroom or Closet Lock</b>						
AU	5405LN	626	497 ANSI	1802, 6-Pin, PARA Keyed Random	086538	5
AU	5405LN	626	497 ANSI	2802, 6-Pin, Schlage® C Keyed Random	086539	5
<b>5405LN - Storeroom or Closet Lock (Small Format Interchangeable Core)</b>						
BAU	5405LN	626	497 ANSI	Less Core	086540	5
<b>5407LN - Entry Lock</b>						
AU	5407LN	626	497 ANSI	1802, 6-Pin, PARA Keyed Random	086541	5
AU	5407LN	626	497 ANSI	2802, 6-Pin, Schlage® C Keyed Random	086542	5
<b>5407LN - Entry Lock (Small Format Interchangeable Core)</b>						
BAU	5407LN	626	497 ANSI	Less Core	086543	5
<b>5408LN - Classroom Lock</b>						
AU	5408LN	626	497 ANSI	1802, 6-Pin, PARA Keyed Random	086544	5
AU	5408LN	626	497 ANSI	2802, 6-Pin, Schlage® C Keyed Random	086545	5
<b>5408LN - Classroom Lock (Small Format Interechangeable Core)</b>						
BAU	5408LN	626	497 ANSI	Less Core	086546	5

Fax 877-888-2772, email [flashship@assaabloy.com](mailto:flashship@assaabloy.com) or use  
Online Order Entry at [www.assaabloydss.com/extranet](http://www.assaabloydss.com/extranet) by clicking the FlashShip® icon

Note: FlashShip® reserves the right to limit quantities.

Copyright © 2017-2024, ASSA ABLOY Door Security Solutions, an ASSA ABLOY Group company. All rights reserved.  
Reproduction in whole or in part without the express written permission of ASSA ABLOY Door Security Solutions is prohibited.

**ASSA ABLOY**  
Opening Solutions

Experience a safer  
and more open world

# 4700LN Series Grade 1 Cylindrical Locks 2-3/4" Backset

**ACCENTRA**  
**ASSA ABLOY**



Augusta - AU



Monroe - MO



Pacific Beach - PB

Design	Model #	Finish	Strike	Cylinder	FlashShip® #	Approx. Wt. Each (Lbs)
<b>4701LN - Passage or Closet Latch</b>						
AU	4701LN	613E	497 ANSI	—	085370	4
AU	4701LN	626	497 ANSI	—	085045	4
AU	4701LN	BSP	497 ANSI	—	086629	4
MO	4701LN	613E	497 ANSI	—	085372	4
MO	4701LN	626	497 ANSI	—	085239	4
PB	4701LN	613E	497 ANSI	—	085371	4
PB	4701LN	626	497 ANSI	—	085046	4
<b>4702LN - Privacy, Bedroom or Bath Lock</b>						
AU	4702LN	613E	497 ANSI	—	085373	4
AU	4702LN	626	497 ANSI	—	085047	4
AU	4702LN	BSP	497 ANSI	—	086630	4
MO	4702LN	613E	497 ANSI	—	085375	4
MO	4702LN	626	497 ANSI	—	085240	4
PB	4702LN	613E	497 ANSI	—	085374	4
PB	4702LN	626	497 ANSI	—	085048	4
<b>4705LN - Storeroom or Closet Lock</b>						
AU	4705LN	613E	497 ANSI	1803-47L, 6-Pin, PARA Keyed Random	085376	5
AU	4705LN	613E	497 ANSI	2803-47L, 6-Pin, Schlage® C Keyed Random	085377	5
AU	4705LN	626	497 ANSI	1803-47L, 6-Pin, PARA Keyed Random	085049	5
AU	4705LN	626	497 ANSI	2803-47L, 6-Pin, Schlage® C Keyed Random	085050	5
AU	4705LN	BSP	497 ANSI	2803-47L, 6-Pin, Schlage® C Keyed Random	086631	5
MO	4705LN	613E	497 ANSI	2803-47L, 6-Pin, Schlage® C Keyed Random	085381	5
MO	4705LN	626	497 ANSI	1803-47L, 6-Pin, PARA Keyed Random	085241	5
MO	4705LN	626	497 ANSI	2803-47L, 6-Pin, Schlage® C Keyed Random	085242	5
PB	4705LN	613E	497 ANSI	2803-47L, 6-Pin, Schlage® C Keyed Random	085379	5
PB	4705LN	626	497 ANSI	1803-47L, 6-Pin, PARA Keyed Random	085051	5
PB	4705LN	626	497 ANSI	2803-47L, 6-Pin, Schlage® C Keyed Random	085052	5
<b>4705LN - Storeroom or Closet Lock (Small Format Interchangeable Core)</b>						
BAU	4705LN	613E	497 ANSI	Less Core	085382	5
BAU	4705LN	626	497 ANSI	Less Core	085053	5
BAU	4705LN	BSP	497 ANSI	Less Core	086632	5
<b>4707LN - Entry Lock</b>						
AU	4707LN	613E	497 ANSI	1803-47L, 6-Pin, PARA Keyed Random	085383	5
AU	4707LN	613E	497 ANSI	2803-47L, 6-Pin, Schlage® C Keyed Random	085384	5
AU	4707LN	626	497 ANSI	1803-47L, 6-Pin, PARA Keyed Random	085054	5
AU	4707LN	626	497 ANSI	2803-47L, 6-Pin, Schlage® C Keyed Random	085055	5
AU	4707LN	BSP	497 ANSI	2803-47L, 6-Pin, Schlage® C Keyed Random	086633	5

**ASSA ABLOY**  
Opening Solutions

Experience a safer  
and more open world

Fax 877-888-2772, email [flashship@assaabloy.com](mailto:flashship@assaabloy.com) or use  
Online Order Entry at [www.assaabloydss.com/extranet](http://www.assaabloydss.com/extranet) by clicking the FlashShip® icon

Note: FlashShip® reserves the right to limit quantities.

Copyright © 2017-2024, ASSA ABLOY Door Security Solutions, an ASSA ABLOY Group company. All rights reserved.  
Reproduction in whole or in part without the express written permission of ASSA ABLOY Door Security Solutions is prohibited.





Augusta - AU



Monroe - MO



Pacific Beach - PB

Design	Model #	Finish	Strike	Cylinder	FlashShip® #	Approx. Wt. Each (Lbs)
<b>4707LN - Entry Lock (Cont)</b>						
MO	4707LN	613E	497 ANSI	2803-47L, 6-Pin, Schlage® C Keyed Random	085397	5
MO	4707LN	626	497 ANSI	1803-47L, 6-Pin, PARA Keyed Random	085243	5
MO	4707LN	626	497 ANSI	2803-47L, 6-Pin, Schlage® C Keyed Random	085244	5
PB	4707LN	613E	497 ANSI	2803-47L, 6-Pin, Schlage® C Keyed Random	085386	5
PB	4707LN	626	497 ANSI	1803-47L, 6-Pin, PARA Keyed Random	085056	5
PB	4707LN	626	497 ANSI	2803-47L, 6-Pin, Schlage® C Keyed Random	085057	5
<b>4707LN - Entry Lock (Small Format Interchangeable Core)</b>						
BAU	4707LN	613E	497 ANSI	Less Core	085388	5
BAU	4707LN	626	497 ANSI	Less Core	085058	5
BAU	4707LN	BSP	497 ANSI	Less Core	086634	5
<b>4708LN - Classroom Lock</b>						
AU	4708LN	613E	497 ANSI	2803-47L, 6-Pin, Schlage® C Keyed Random	085390	5
AU	4708LN	626	497 ANSI	1803-47L, 6-Pin, PARA Keyed Random	085059	5
AU	4708LN	626	497 ANSI	2803-47L, 6-Pin, Schlage® C Keyed Random	085060	5
AU	4708LN	BSP	497 ANSI	2803-47L, 6-Pin, Schlage® C Keyed Random	086635	5
MO	4708LN	613E	497 ANSI	2803-47L, 6-Pin, Schlage® C Keyed Random	085394	5
MO	4708LN	626	497 ANSI	1803-47L, 6-Pin, PARA Keyed Random	085245	5
MO	4708LN	626	497 ANSI	2803-47L, 6-Pin, Schlage® C Keyed Random	085246	5
PB	4708LN	613E	497 ANSI	2803-47L, 6-Pin, Schlage® C Keyed Random	085392	5
PB	4708LN	626	497 ANSI	1803-47L, 6-Pin, PARA Keyed Random	085061	5
PB	4708LN	626	497 ANSI	2803-47L, 6-Pin, Schlage® C Keyed Random	085062	5
<b>4708LN - Classroom Lock (Small Format Interchangeable Core)</b>						
BAU	4708LN	613E	497 ANSI	Less Core	085395	5
BAU	4708LN	626	497 ANSI	Less Core	085063	5
BAU	4708LN	BSP	497 ANSI	Less Core	086636	5

Fax 877-888-2772, email [flashship@assaabloy.com](mailto:flashship@assaabloy.com) or use  
Online Order Entry at [www.assaabloydss.com/extranet](http://www.assaabloydss.com/extranet) by clicking the FlashShip® icon

Note: FlashShip® reserves the right to limit quantities.

Copyright © 2017-2024, ASSA ABLOY Door Security Solutions, an ASSA ABLOY Group company. All rights reserved.  
Reproduction in whole or in part without the express written permission of ASSA ABLOY Door Security Solutions is prohibited.

**ASSA ABLOY**  
Opening Solutions

Experience a safer  
and more open world

# 5300LN Series Grade 2 Cylindrical Locks 2-3/4" Backset

**ACCENTRA**  
**ASSA ABLOY**



Augusta - AU

Design	Model #	Finish	Strike	Cylinder	FlashShip® #	Approx. Wt. Each (Lbs)
<b>5301LN - Passage or Closet Latch</b>						
AU	5301LN	626	497 ANSI	—	086524	4
<b>5302LN - Privacy, Bedroom or Bath Lock</b>						
AU	5302LN	626	497 ANSI	—	086525	4
<b>5305LN - STOREROOM OR CLOSET LOCK</b>						
AU	5305LN	626	497 ANSI	Less Cylinder	086526	4
AU	5305LN	626	497 ANSI	1803-47L, 6-Pin, PARA Keyed Random	086527	5
AU	5305LN	626	497 ANSI	2803-47L, 6-Pin, Schlage® C Keyed Random	086529	5
AU	5305LN	626	497 ANSI	2803-47L, 6-Pin, Schlage® C 0-Bitted	086528	5
<b>5307LN - Entry Lock</b>						
AU	5307LN	626	497 ANSI	Less Cylinder	086531	5
AU	5307LN	626	497 ANSI	1803-47L, 6-Pin, PARA Keyed Random	086532	5
AU	5307LN	626	497 ANSI	2803-47L, 6-Pin, Schlage® C Keyed Random	086534	5
AU	5307LN	626	497 ANSI	2803-47L, 6-Pin, Schlage® C 0-Bitted	086533	5

**ASSA ABLOY**  
Opening Solutions

Experience a safer  
and more open world

Fax 877-888-2772, email [flashship@assaabloy.com](mailto:flashship@assaabloy.com) or use  
Online Order Entry at [www.assaabloydss.com/extranet](http://www.assaabloydss.com/extranet) by clicking the FlashShip® icon

*Note: FlashShip® reserves the right to limit quantities.*

Copyright © 2017-2024, ASSA ABLOY Door Security Solutions, an ASSA ABLOY Group company. All rights reserved.  
Reproduction in whole or in part without the express written permission of ASSA ABLOY Door Security Solutions is prohibited.



Augusta - AU



Monroe - MO



Pacific Beach - PB

Design	Model #	Finish	Strike	Cylinder	FlashShip® #	Approx. Wt. Each (Lbs)
<b>4601LN - Passage or Closet Latch</b>						
AU	4601LN	613E	497 ANSI	—	085307	4
AU	4601LN	626	497 ANSI	—	085089	4
AU	4601LN	BSP	497 ANSI	—	086615	4
MO	4601LN	613E	497 ANSI	—	085360	4
MO	4601LN	626	497 ANSI	—	085247	4
PB	4601LN	613E	497 ANSI	—	085308	4
PB	4601LN	626	497 ANSI	—	085090	4
<b>4602LN - Privacy, Bedroom or Bath Lock</b>						
AU	4602LN	613E	497 ANSI	—	085309	4
AU	4602LN	626	497 ANSI	—	085091	4
AU	4602LN	BSP	497 ANSI	—	086616	4
MO	4602LN	613E	497 ANSI	—	085361	4
MO	4602LN	626	497 ANSI	—	085248	4
PB	4602LN	613E	497 ANSI	—	085310	4
PB	4602LN	626	497 ANSI	—	085092	4
<b>4605LN - Storeroom or Closet Lock</b>						
AU	4605LN	613E	497 ANSI	1806, 6-Pin, PARA Keyed Random	085311	5
AU	4605LN	613E	497 ANSI	2806, 6-Pin, Schlage® C Keyed Random	085312	5
AU	4605LN	626	497 ANSI	1806, 6-Pin, PARA Keyed Random	085093	5
AU	4605LN	626	497 ANSI	2806, 6-Pin, Schlage® C Keyed Random	085094	5
AU	4605LN	BSP	497 ANSI	2806, 6-Pin, Schlage® C Keyed Random	086617	5
MO	4605LN	613E	497 ANSI	1806, 6-Pin, PARA Keyed Random	085362	5
MO	4605LN	613E	497 ANSI	2806, 6-Pin, Schlage® C Keyed Random	085363	5
MO	4605LN	626	497 ANSI	1806, 6-Pin, PARA Keyed Random	085249	5
MO	4605LN	626	497 ANSI	2806, 6-Pin, Schlage® C Keyed Random	085250	5
PB	4605LN	613E	497 ANSI	1806, 6-Pin, PARA Keyed Random	085313	5
PB	4605LN	613E	497 ANSI	2806, 6-Pin, Schlage® C Keyed Random	085314	5
PB	4605LN	626	497 ANSI	1806, 6-Pin, PARA Keyed Random	085095	5
PB	4605LN	626	497 ANSI	2806, 6-Pin, Schlage® C Keyed Random	085096	5
<b>4605LN - Storeroom or Closet Lock (Small Format Interchangeable Core)</b>						
BAU	4605LN	613E	497 ANSI	Less Core	085315	5
BAU	4605LN	626	497 ANSI	Less Core	085097	5
BAU	4605LN	BSP	497 ANSI	Less Core	086618	5
<b>4607LN - Entry Lock</b>						
AU	4607LN	613E	497 ANSI	1806, 6-Pin, PARA Keyed Random	085316	5
AU	4607LN	613E	497 ANSI	2806, 6-Pin, Schlage® C Keyed Random	085317	5
AU	4607LN	626	497 ANSI	1806, 6-Pin, PARA Keyed Random	085098	5
AU	4607LN	626	497 ANSI	2806, 6-Pin, Schlage® C Keyed Random	085099	5
AU	4607LN	BSP	497 ANSI	2806, 6-PIN Schlage® C Keyed Random	086619	5
MO	4607LN	613E	497 ANSI	1806, 6-Pin, PARA Keyed Random	085364	5
MO	4607LN	613E	497 ANSI	2806, 6-Pin, Schlage® C Keyed Random	085365	5
MO	4607LN	626	497 ANSI	1806, 6-Pin, PARA Keyed Random	085251	5
MO	4607LN	626	497 ANSI	2806, 6-Pin, Schlage® C Keyed Random	085252	5
PB	4607LN	613E	497 ANSI	1806, 6-Pin, PARA Keyed Random	085318	5
PB	4607LN	613E	497 ANSI	2806, 6-Pin, Schlage® C Keyed Random	085319	5
PB	4607LN	626	497 ANSI	1806, 6-Pin, PARA Keyed Random	085100	5
PB	4607LN	626	497 ANSI	2806, 6-Pin, Schlage® C Keyed Random	085101	5

Fax 877-888-2772, email [flashship@assaabloy.com](mailto:flashship@assaabloy.com) or use Online Order Entry at [www.assaabloydss.com/extranet](http://www.assaabloydss.com/extranet) by clicking the FlashShip® icon

Note: FlashShip® reserves the right to limit quantities.

Copyright © 2017-2024, ASSA ABLOY Door Security Solutions, an ASSA ABLOY Group company. All rights reserved. Reproduction in whole or in part without the express written permission of ASSA ABLOY Door Security Solutions is prohibited.

**ASSA ABLOY**  
Opening Solutions

Experience a safer  
and more open world

# 4600LN Series Grade 2 Cylindrical Locks 2-3/4" Backset

**ACCENTRA**  
**ASSA ABLOY**



Augusta - AU



Monroe - MO



Pacific Beach - PB

Design	Model #	Finish	Strike	Cylinder	FlashShip® #	Approx. Wt. Each (Lbs)
<b>4607LN - Entry Lock (Small Format Interchangeable Core)</b>						
BAU	4607LN	613E	497 ANSI	Less Core	085320	5
BAU	4607LN	626	497 ANSI	Less Core	085102	5
BAU	4607LN	BSP	497 ANSI	Less Core	086620	5
<b>4608LN - Classroom Lock</b>						
AU	4608LN	613E	497 ANSI	1806, 6-Pin, PARA Keyed Random	085321	5
AU	4608LN	613E	497 ANSI	2806, 6-Pin, Schlage® C Keyed Random	085322	5
AU	4608LN	626	497 ANSI	1806, 6-Pin, PARA Keyed Random	085103	5
AU	4608LN	626	497 ANSI	2806, 6-Pin, Schlage® C Keyed Random	085104	5
AU	4608LN	BSP	497 ANSI	2806, 6-Pin, Schlage® C Keyed Random	086621	5
MO	4608LN	613E	497 ANSI	1806, 6-Pin, PARA Keyed Random	085366	5
MO	4608LN	613E	497 ANSI	2806, 6-Pin, Schlage® C Keyed Random	085367	5
MO	4608LN	626	497 ANSI	1806, 6-Pin, PARA Keyed Random	085253	5
MO	4608LN	626	497 ANSI	2806, 6-Pin, Schlage® C Keyed Random	085254	5
PB	4608LN	613E	497 ANSI	1806, 6-Pin, PARA Keyed Random	085323	5
PB	4608LN	613E	497 ANSI	2806, 6-Pin, Schlage® C Keyed Random	085324	5
PB	4608LN	626	497 ANSI	1806, 6-Pin, PARA Keyed Random	085105	5
PB	4608LN	626	497 ANSI	2806, 6-Pin, Schlage® C Keyed Random	085106	5
<b>4608LN - Classroom Lock (Small Format Interchangeable Core)</b>						
BAU	4608LN	613E	497 ANSI	Less Core	085325	5
BAU	4608LN	626	497 ANSI	Less Core	085107	5
BAU	4608LN	BSP	497 ANSI	Less Core	086622	5
<b>4628LN - Communicating Passage Lock</b>						
AU	4628LN	613E	497 ANSI	—	085326	5
AU	4628LN	626	497 ANSI	—	085108	5
AU	4628LN	BSP	497 ANSI	—	086623	5
MO	4628LN	613E	497 ANSI	—	085368	5
MO	4628LN	626	497 ANSI	—	085255	5
PB	4628LN	613E	497 ANSI	—	085327	5
PB	4628LN	626	497 ANSI	—	085109	5
<b>4655LN - Dummy Trim</b>						
AU	4655LN	613E	—	—	085328	2
AU	4655LN	626	—	—	085110	2
AU	4655LN	BSP	—	—	086624	2
MO	4655LN	613E	—	—	085369	2
MO	4655LN	626	—	—	085256	2
PB	4655LN	613E	—	—	085329	2
PB	4655LN	626	—	—	085111	2

**ASSA ABLOY**  
Opening Solutions

Experience a safer  
and more open world

Fax 877-888-2772, email [flashship@assaabloy.com](mailto:flashship@assaabloy.com) or use  
Online Order Entry at [www.assaabloydss.com/extranet](http://www.assaabloydss.com/extranet) by clicking the FlashShip® icon

Note: FlashShip® reserves the right to limit quantities.

Copyright © 2017-2024, ASSA ABLOY Door Security Solutions, an ASSA ABLOY Group company. All rights reserved.  
Reproduction in whole or in part without the express written permission of ASSA ABLOY Door Security Solutions is prohibited.





Carolina - CA

Design	Model #	Finish	Strike	Cylinder	FlashShip® #	Approx. Wt. Each (Lbs)
<b>4601 - Passage or Closet Latch</b>						
CA	4601YC	630	371	—	085257	2
<b>4602 - Privacy, Bedroom or Bath Lock</b>						
CA	4602YC	630	371	—	085258	2
<b>4605 - Storeroom or Closet Lock</b>						
CA	4605YC	630	371	1805, 6-Pin, PARA Keyed Random	085262	2.5
CA	4605YC	630	371	2805, 6-Pin, Schlage® C Keyed Random	085264	2.5
<b>4605 - Storeroom or Closet Lock (Small Format Interchangeable Core)</b>						
BCA	4605YC	630	371	Less Core	085266	2.5
<b>4607 - Entry Lock</b>						
CA	4607YC	630	371	1805, 6-Pin, PARA Keyed Random	085270	2.5
CA	4607YC	630	371	2805, 6-Pin, Schlage® C Keyed Random	085272	2.5
<b>4607 - Entry Lock (Small Format Interchangeable Core)</b>						
BCA	4607YC	630	371	Less Core	085274	2.5
<b>4608 - Classroom Lock</b>						
CA	4608YC	630	371	1805, 6-Pin, PARA Keyed Random	085281	2.5
CA	4608YC	630	371	2805, 6-Pin, Schlage® C Keyed Random	085283	2.5
<b>4608 - Classroom Lock (Small Format Interchangeable Core)</b>						
BCA	4608YC	630	371	Less Core	085285	2.5
<b>4655 - Dummy Trim</b>						
CA	4655YC	630	—	—	085286	1

Fax 877-888-2772, email [flashship@assaabloy.com](mailto:flashship@assaabloy.com) or use  
Online Order Entry at [www.assaabloydss.com/extranet](http://www.assaabloydss.com/extranet) by clicking the FlashShip® icon

Note: FlashShip® reserves the right to limit quantities.

Copyright © 2017-2024, ASSA ABLOY Door Security Solutions, an ASSA ABLOY Group company. All rights reserved.  
Reproduction in whole or in part without the express written permission of ASSA ABLOY Door Security Solutions is prohibited.

**ASSA ABLOY**  
Opening Solutions

Experience a safer  
and more open world

**ACCENTRA**  
**ASSA ABLOY**

Latchbolts						
Model #	Finish	Front	Backset	Front Width	FlashShip #	Approx. Wt. Each (Lbs)
<b>Plain</b>						
MCP238	630	Square	2-3/8"	1"	086037	1
MCP238	613E	Square	2-3/8"	1"	086039	1
<b>Deadlocking</b>						
MCD238	630	Square	2-3/8"	1"	086038	1
MCD238	613E	Square	2-3/8"	1"	086040	1

Strikes for Cylindrical Locks				
Model #	Finish	Description	FlashShip #	Approx. Wt. Each (Lbs)
70S	626	Full lip Strike with anti-rattle tab	086041	1
70S	613E	Full lip Strike with anti-rattle tab	086044	1
71S	626	Full lip Strike with anti-rattle tab, rounded corners	086042	1
71S	613E	Full lip Strike with anti-rattle tab, rounded corners	086045	1
371	626	T-Strike for knob & lever	086043	1
371	613E	T-Strike for knob & lever	086046	1
497	626	ANSI 4-7/8" Curved Lip Strike, 1-1/2" Lip to Center	086092	1

**ASSA ABLOY**  
Opening Solutions

Experience a safer  
and more open world

Fax 877-888-2772, email [flashship@assaabloy.com](mailto:flashship@assaabloy.com) or use  
Online Order Entry at [www.assaabloydss.com/extranet](http://www.assaabloydss.com/extranet) by clicking the FlashShip® icon

*Note: FlashShip® reserves the right to limit quantities.*

Copyright © 2017-2024, ASSA ABLOY Door Security Solutions, an ASSA ABLOY Group company. All rights reserved.  
Reproduction in whole or in part without the express written permission of ASSA ABLOY Door Security Solutions is prohibited.



D292 Deadbolt



D212 Deadbolt



B-D112 Deadbolt

**ACCENTRA**  
**ASSA ABLOY**

Model #	Finish	Strike	Cylinder	FlashShip® #	Approx. Wt. Each (Lbs)
<b>Cylinder x Thumbturn</b>					
D112	613E	D243	2807, 6-Pin, Schlage® C Keyed Random	086050	2
D112	626	D243	1807, 6-Pin, PARA Keyed Random	086047	2
D112	626	D243	2807, 6-Pin, Schlage® C Keyed Random	086049	2
D212	613E	D243	1807, 6-Pin, PARA Keyed Random	085337	2
D212	613E	D243	2807, 6-Pin, Schlage® C Keyed Random	085338	2
D212	626	D243	1807, 6-Pin, PARA Keyed Random	085133	2
D212	626	D243	2807, 6-Pin, Schlage® C Keyed Random	085134	2
D212	BSP	D243	2807, 6-Pin, Schlage® C Keyed Random	086637	2
<b>Cylinder x Thumbturn (Small Format Interchangeable Core)</b>					
B-D112	626	D243	Less Core	086051	2
B-D212	626	D243	Less Core	085135	2
<b>Cylinder x Cylinder</b>					
D122	626	D243	2808, 6-Pin, Schlage® C Keyed Random	086055	2
D222	626	D243	1808, 6-Pin, PARA Keyed Random	085136	2
D222	626	D243	2808, 6-Pin, Schlage® C Keyed Random	085137	2
D222	BSP	D243	2808, 6-Pin, Schlage® C Keyed Random	086638	2
<b>Cylinder x Cylinder (Small Format Interchangeable Core)</b>					
B-D122	626	D243	Less Core	086057	2
B-D222	626	D243	Less Core	085138	2
<b>Cylinder x Classroom</b>					
D162	626	D243	2807, 6-Pin, Schlage® C Keyed Random	086061	2
D262	626	D243	1807, 6-Pin, PARA Keyed Random	086065	2
D262	626	D243	2807, 6-Pin, Schlage® C Keyed Random	086066	2
<b>Cylinder x Classroom (Small Format Interchangeable Core)</b>					
B-D262	626	D243	Less Core	086069	2
<b>Blank Plate x Thumbturn</b>					
D242	613E	D243	—	085343	2
D242	626	D243	—	085139	2
D242	BSP	D243	—	086639	2
<b>Occupancy Indicator x Thumbturn</b>					
D292	613E	D243	—	085419	2
D292	626	D243	—	085418	2
D292	BSP	D243	—	086640	2
<b>Deadbolt Assemblies</b>					
D38	613E	2-3/8"	1"	086072	1
D38	626	2-3/8"	1"	086071	1

Fax 877-888-2772, email [flashship@assaabloy.com](mailto:flashship@assaabloy.com) or use  
Online Order Entry at [www.assaabloydss.com/extranet](http://www.assaabloydss.com/extranet) by clicking the FlashShip® icon  
Note: FlashShip® reserves the right to limit quantities.

Copyright © 2017-2024, ASSA ABLOY Door Security Solutions, an ASSA ABLOY Group company. All rights reserved.  
Reproduction in whole or in part without the express written permission of ASSA ABLOY Door Security Solutions is prohibited.

**ASSA ABLOY**  
Opening Solutions

Experience a safer  
and more open world

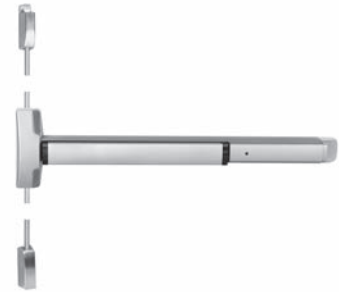
## ACCENTRA ASSA ABLOY



7110 Surface Vertical Rod



6000 Rim



6110 Surface Vertical Rod

Model #	Description	Finish	Hand*	Strike	FlashShip® #	Approx. Wt. Each (Lbs)
<b>7100 - Rim</b>						
7100-36	Rim Exit Device, 36"	630	—	757F	086547	14
7100 5CH-36	5 lb Pressure Release	630	—	757F	087285	14
7100F-36	3 Hour Fire Rated Rim Exit Device, 36"	630	—	757F	086548	14
<b>7110 - Surface Vertical Rod</b>						
7110-36	SVR Exit Device, 36"	630	RHR	791 Top, 790 Bottom	086550	18
7110-36	SVR Exit Device, 36"	630	LHR	791 Top, 790 Bottom	086549	18
7110F-36	3 Hour Fire Rated SVR Exit Device, 36"	630	RHR	791 Top, 790 Bottom	086551	18
7110F-36	3 Hour Fire Rated SVR Exit Device, 36"	630	LHR	791 Top, 790 Bottom	086552	18
<b>7170 - Surface Vertical Rod - LBR</b>						
7170F90LBR	90 Minute Fire Rated SVR Exit Device, Less Bottom Rod, 36"	630	—	726	086554	22
<b>6100 - Rim</b>						
6100-36	Rim Exit Device, 36"	630	—	757F	086111	11
6100-36	Rim Exit Device, 36"	BSP	—	757F	086641	11
6100-48	Rim Exit Device, 48"	630	—	757F	086112	11
6100F-36	3 Hour Fire Rated Rim Exit Device, 36"	630	—	757F	086113	11
6100F-36	3 Hour Fire Rated Rim Exit Device, 36"	BSP	—	757F	086642	11
6100F-48	3 Hour Fire Rated Rim Exit Device, 48"	630	—	757F	086114	11
<b>6170 - Surface Vertical Rod</b>						
6170-36	SVR Exit Device, 36"	630	RHR	726 Top, 790 Bottom	086115	15
6170F-36	SVR Exit Device, 36"	630	RHR	726 Top, 790 Bottom	086117	15
6170ED(F)90 x LBR	90 Minute Fire Rated SVR Exit Device, Less Bottom Rod, 36"	630	RHR	726 Top, 790 Bottom	086119	15
6100-A-ALR-36	Rim Exit Device, Alarmed with Red Screenprinted Pushpad	BSP	RHR	757F	086373	15

## ASSA ABLOY

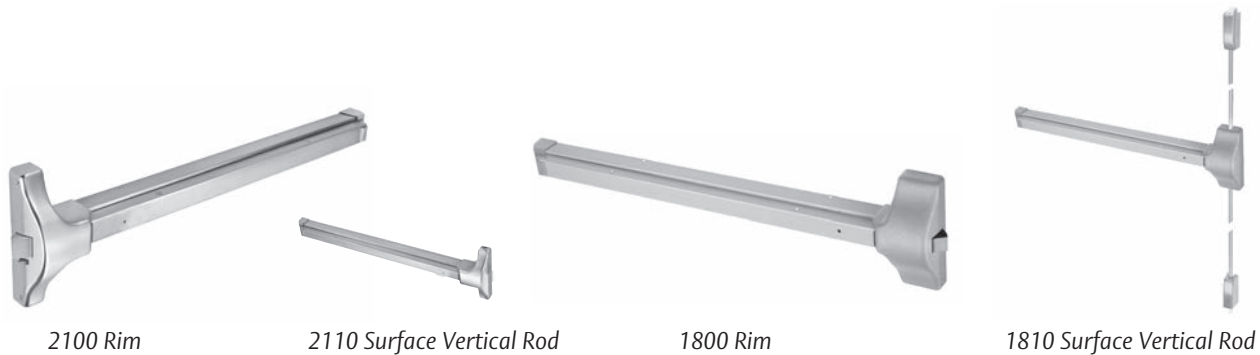
Opening Solutions

Experience a safer  
and more open world

Fax 877-888-2772, email [flashship@assaabloy.com](mailto:flashship@assaabloy.com) or use  
Online Order Entry at [www.assaabloydss.com/extranet](http://www.assaabloydss.com/extranet) by clicking the FlashShip® icon

Note: FlashShip® reserves the right to limit quantities.

Copyright © 2017-2024, ASSA ABLOY Door Security Solutions, an ASSA ABLOY Group company. All rights reserved.  
Reproduction in whole or in part without the express written permission of ASSA ABLOY Door Security Solutions is prohibited.



Model #	Description	Finish	Hand*	Strike	FlashShip® #	Approx. Wt. Each (Lbs)
<b>2100 - Rim</b>						
2100-36	Rim Exit Device, 36"	630	—	757F	085148	11
2100-36	Rim Exit Device, 36"	689	—	757F	086021	11
2100WS	Rim Exit Device, 36"	689	—	757F	086109	11
2100WS	Rim Exit Device, 36"	630	—	757F	086110	11
2100-48	Rim Exit Device, 48"	630	—	757F	085149	11
2100-48	Rim Exit Device, 48"	689	—	757F	086025	11
2100F-36	3 Hour Fire Rated Rim Exit Device, 36"	630	—	757F	085150	11
2100F-36	3 Hour Fire Rated Rim Exit Device, 36"	689	—	757F	086022	11
2100F-48	3 Hour Fire Rated Rim Exit Device, 48"	630	—	757F	085151	11
2100F-48	3 Hour Fire Rated Rim Exit Device, 48"	689	—	757F	086026	11
<b>2110 - Surface Vertical Rod</b>						
2110-36	SVR Exit Device, 36"	630	RHR	791 Top, 790 Bottom	085152	15
2110-36	SVR Exit Device, 36"	689	RHR	791 Top, 790 Bottom	086023	15
2110F-36	3 Hour Fire Rated SVR Exit Device, 36"	630	RHR	791 Top, 790 Bottom	085154	15
2110F-36	3 Hour Fire Rated SVR Exit Device, 36"	689	RHR	791 Top, 790 Bottom	086024	15
2110-48	SVR Exit Device, 348	630	RHR	791 Top, 790 Bottom	086574	15
2110F-48	3 Hour Fire Rated SVR Exit Device, 48"	630	RHR	791 Top, 790 Bottom	086575	15
<b>1800 - Rim</b>						
1800-36	Rim Exit Device, 36"	689	—	757F	085163	11
1800-36	Rim Exit Device, 36"	695	—	757F	085287	11
1800-48	Rim Exit Device, 48"	689	—	757F	085164	12
1800F-36	3 Hour Fire Rated Rim Exit Device, 36"	689	—	757F	085165	11
1800F-36	3 Hour Fire Rated Rim Exit Device, 36"	695	—	757F	085289	11
1800F-48	3 Hour Fire Rated Rim Exit Device, 48"	689	—	757F	085166	12
<b>1810 - Surface Vertical Rod</b>						
1810-36	SVR Exit Device, 36"	689	RHR	791 Top, 790 Bottom	085167	15
1810-36	SVR Exit Device, 36"	695	RHR	791 Top, 790 Bottom	085291	15
1810F-36	3 Hour Fire Rated SVR Exit Device, 36"	689	RHR	791 Top, 790 Bottom	085169	15
1810F-48	3 Hour Fire Rated SVR Exit Device, 48"	689	RHR	791 Top, 790 Bottom	086573	15

\*Units are field reversible

Fax 877-888-2772, email flashship@assaabloy.com or use Online Order Entry at [www.assaabloydss.com/extranet](http://www.assaabloydss.com/extranet) by clicking the FlashShip® icon

Note: FlashShip® reserves the right to limit quantities.

Copyright © 2017-2024, ASSA ABLOY Door Security Solutions, an ASSA ABLOY Group company. All rights reserved. Reproduction in whole or in part without the express written permission of ASSA ABLOY Door Security Solutions is prohibited.

**ASSA ABLOY**  
Opening Solutions

Experience a safer  
and more open world

**ACCENTRA**  
**ASSA ABLOY**



217F Plate Trim

210F Series: Plate Trim

Model #	Finish	Cylinder	FlashShip® #	Approx. Wt. Each (Lbs)
<b>Dummy Trim Pull Plate</b>				
214F	689	—	085178	1
<b>Nightlatch Cylinder x Pull</b>				
217F	689	Less Cylinder	085179	1

Note: See page 28 for cylinder options



Augusta - AU



Pacific Beach - PB

440F Series: Rose Trim

Design	Model #	Finish	Cylinder	FlashShip® #	Approx. Wt. Each (Lbs)
<b>Nightlatch</b>					
AU	441F	626	1802, 6-Pin, PARA Keyed Random	086019	2.5
AU	441F	626	2802, 6-Pin, Schlage® C Keyed Random	086020	2.5
AU	441F	689	1802, 6-Pin, PARA Keyed Random	086015	2.5
AU	441F	689	2802, 6-Pin, Schlage® C Keyed Random	086016	2.5
AU	441F	BSP	2802, 6-Pin, Schlage® C Keyed Random	086643	2.5
PB	441F	626	1802, 6-Pin, PARA Keyed Random	086606	2.5
<b>Nightlatch Access by Key (Small Format Interchangeable Core)</b>					
BAU	441F	626	Less Core	086586	2.5
BPB	441F	626	Less Core	086587	2.5
<b>Classroom</b>					
AU	446F	626	1802, 6-Pin, PARA Keyed Random	085180	2.5
AU	446F	626	2802, 6-Pin, Schlage® C Keyed Random	085181	2.5
AU	446F	689	1802, 6-Pin, PARA Keyed Random	086017	2.5
AU	446F	689	2802, 6-Pin, Schlage® C Keyed Random	086018	2.5
AU	446F	695	1802, 6-Pin, PARA Keyed Random	085299	2.5
AU	446F	695	2802, 6-Pin, Schlage® C Keyed Random	085300	2.5
AU	446F	BSP	2802, 6-Pin, Schlage® C Keyed Random	086644	2.5
PB	446F	626	1802, 6-Pin, PARA Keyed Random	085182	2.5
PB	446F	626	2802, 6-Pin, Schlage® C Keyed Random	085183	2.5
<b>Classroom (Small Format Interchangeable Core)</b>					
BAU	446F	626	Less Core	085184	2.5
BPB	446F	626	Less Core	086588	2.5
BAU	446F	695	Less Core	085303	2.5
<b>Dummy Free-Wheeling Lever</b>					
AU	448F	626	—	085185	2.5
AU	448F	695	—	085304	2.5
AU	448F	BSP	—	086645	2.5
PB	448F	626	—	085186	2.5

**ASSA ABLOY**  
Opening Solutions

Experience a safer  
and more open world

Fax 877-888-2772, email [flashship@assaabloy.com](mailto:flashship@assaabloy.com) or use  
Online Order Entry at [www.assaabloydss.com/extranet](http://www.assaabloydss.com/extranet) by clicking the FlashShip® icon

Note: FlashShip® reserves the right to limit quantities.

Copyright © 2017-2024, ASSA ABLOY Door Security Solutions, an ASSA ABLOY Group company. All rights reserved.  
Reproduction in whole or in part without the express written permission of ASSA ABLOY Door Security Solutions is prohibited.





426F Escutcheon Trim



M200 Series

## 420F Series: Escutcheon Trim

Design	Model #	Finish	Hand*	Cylinder	FlashShip® #	Approx. Wt. Each (Lbs)
<b>Classroom/Storeroom</b>						
AU	426F	630	RHR	Less Cylinder	085187	2.7
AU	426F	689	RHR	Less Cylinder	086582	2.7
AU	426F	695	RHR	Less Cylinder	085295	2.7
PB	426F	630	RHR	Less Cylinder	085188	2.7
<b>Passage/Dummy</b>						
AU	428F	630	RHR	—	085189	2.7
AU	428F	695	RHR	—	085297	2.7
PB	428F	630	RHR	—	085190	2.7
PB	428F	695	RHR	—	085298	2.7
AU	428F	689	RHR	—	086584	2.7

Note: See page 28 for cylinder options

\*Units are field reversible

## M200 Series: Removable Mullions

Model #	Description	FlashShip® #	Approx. Wt. Each (Lbs)
<b>For 8 Ft. Openings</b>			
M200-7ft 2in	Complete for Panic Exits	086718	35
M200F-7ft 2in	Complete for Fire Exits	086719	35

Fax 877-888-2772, email [flashship@assaabloy.com](mailto:flashship@assaabloy.com) or use  
 Online Order Entry at [www.assaabloydss.com/extranet](http://www.assaabloydss.com/extranet) by clicking the FlashShip® icon

Note: FlashShip® reserves the right to limit quantities.

Copyright © 2017-2024, ASSA ABLOY Door Security Solutions, an ASSA ABLOY Group company. All rights reserved.  
 Reproduction in whole or in part without the express written permission of ASSA ABLOY Door Security Solutions is prohibited.

**ASSA ABLOY**  
 Opening Solutions

Experience a safer  
 and more open world

**ACCENTRA**  
ASSA ABLOY



620F Escutcheon Trim

## 620F Series: Escutcheon Trim

Design	Model #	Finish	Hand*	FlashShip® #	Approx. Wt. Each (Lbs)
<b>Exit Only/Blank Plate</b>					
—	620F	630	—	086266	2
<b>Classroom/Storeroom</b>					
AU	626F	630	RHR	086126	5
AU	626F	BSP	RHR	086647	5
PB	626F	630	RHR	086127	5
<b>Passage/Dummy</b>					
AU	628F	630	RHR	086128	5
AU	628F	BSP	RHR	086648	5
PB	628F	630	RHR	086129	5

## 630F Series: Escutcheon Trim

Design	Model #	Finish	Hand*	Cylinder	FlashShip® #	Approx. Wt. Each (Lbs)
<b>Nightlatch</b>						
—	632F	630	RHR	Less Cylinder	086243	5
—	632F	BSP	RHR	Less Cylinder	086649	5
<b>Dummy</b>						
—	634F	630	RHR	Less Cylinder	086244	5
—	634F	BSP	RHR	Less Cylinder	086650	5

Note: See page 28 for cylinder options

\*Units are field reversible-

**ASSA ABLOY**  
Opening Solutions

Experience a safer  
and more open world

Fax 877-888-2772, email [flashship@assaabloy.com](mailto:flashship@assaabloy.com) or use  
Online Order Entry at [www.assaabloydss.com/extranet](http://www.assaabloydss.com/extranet) by clicking the FlashShip® icon

Note: FlashShip® reserves the right to limit quantities.

Copyright © 2017-2024, ASSA ABLOY Door Security Solutions, an ASSA ABLOY Group company. All rights reserved.  
Reproduction in whole or in part without the express written permission of ASSA ABLOY Door Security Solutions is prohibited.



1109 x626

## Cylinders for Exit Device Trims and Mullions

Model #	Description	Key Section	Finish	Collar Size Included	FlashShip #	Approx. Wt. Each (Lbs)
<b>Rim Cylinders</b>						
1109	6-Pin, Keyed Random	PARA	626	1765.250	085003	0.4
1109	6-Pin, Keyed Random	PARA	613E	1765.250	085344	0.4
2109	6-Pin, Schlage® Keyed Random	C	626	1765.250	085004	0.4
2109	6-Pin, Schlage® Keyed Random	C	613E	1765.250	085345	0.4
<b>Rim Cylinders (Interchangeable Core)</b>						
1193 x 1-7/16"	LFIC, 6-Pin, 0-Bitted	GA	626	1765.250	086558	1
1193 x 1-7/16"	LFIC, 6-Pin, 0-Bitted	PARA	626	1765.250	086559	1
1193 x 1-7/16"	LFIC, 6-Pin, 0-Bitted	GA	626	1765.469	086557	1
1193 x 1-7/16"	LFIC, 6-Pin, 0-Bitted	PARA	626	1765.469	086560	1
1193 x 1-7/16"	LFIC, 6-Pin, 0-Bitted	GA	626	1765.656	086561	1
1193 x 1-7/16"	LFIC, 6-Pin, 0-Bitted	PARA	626	1765.656	086562	1
<b>Rim Housings</b>						
1212 x 1-7/16"	LFIC Housing Only, Less Core	—	626	1765.250	086566	0.5
1212 x 1-7/16"	LFIC Housing Only, Less Core	—	626	1765.469	086565	0.5
1212 x 1-7/16"	LFIC Housing Only, Less Core	—	626	1765.656	086567	0.5
K680 x 1-3/8"	SFIC Housing Only, Less Core	—	613E	1765.375	085346	0.5
K680 x 1-3/8"	SFIC Housing Only, Less Core	—	626	1765.187	086596	0.5
K680 x 1-3/8"	SFIC Housing Only, Less Core	—	626	1765.375	085005	0.5
K680 x 1-3/8"	SFIC Housing Only, Less Core	—	626	1765.406	086597	0.5
K680 x 1-3/8"	SFIC Housing Only, Less Core	—	626	1765.563	086598	0.5
<b>Mortise Cylinders for SDA 16</b>						
2153 x 1-1/8"	6-Pin, Keyed Random	PARA	626	1765.312	086576	0.4
2553 x 1-1/8"	6-Pin, Schlage® Keyed Random	C	626	1765.312	086579	0.4
<b>Interchangeable Cores (Large Format)</b>						
1210	Core Only, 6-Pin, 0-Bitted	GA	—	626	086563	0.3
1210	Core Only, 6-Pin, 0-Bitted	PARA	—	626	086564	0.3

Fax 877-888-2772, email [flashship@assaabloy.com](mailto:flashship@assaabloy.com) or use  
 Online Order Entry at [www.assaabloydss.com/extranet](http://www.assaabloydss.com/extranet) by clicking the FlashShip® icon  
 Note: FlashShip® reserves the right to limit quantities.

Copyright © 2017-2024, ASSA ABLOY Door Security Solutions, an ASSA ABLOY Group company. All rights reserved.  
 Reproduction in whole or in part without the express written permission of ASSA ABLOY Door Security Solutions is prohibited.

**ASSA ABLOY**  
 Opening Solutions

Experience a safer  
 and more open world

**ACCENTRA**  
**ASSA ABLOY**



SDA16

### Miscellaneous Hardware for Exit Devices

Model #	Description	Finish	FlashShip #	Approx. Wt. Each (Lbs)
<b>Extension Rods - For All Exit Device Series</b>				
2010-12	12" (305mm) Length	630	085204	1
2010-12	12" (305mm) Length	689	085205	1
2010-12	12" (305mm) Length	695	085306	1
<b>Shim Kits for 7000 Series</b>				
723	For Rim, SquareBolt®, CVR and Mortise Devices	693	086590	2
724	For SVR Devices	693	086591	3
<b>Shim Kits for 2100 Series</b>				
223	For 2100(F) rim	693	086027	1
224	For 2110(F) SVR	693	086028	1
<b>Strikes</b>				
790	Standard Floor Strike	693	086592	0.1
791	Standard Top Strike	693	086593	0.1
793	Optional Rim Strike for Double Door Applications without a Mullion	—	086029	1.5
<b>Miscellaneous</b>				
7000	Long Spindle (Tailpiece) Kit for All 620F & 630F Series Trim, 2" to 2-1/2" Thick Door	—	086556	0.1
ECK1	Flush End Cap Kit	630	086594	1
ECK7	Impact Resistant End Cap Kit	630	086595	1
60-7000-0815	Schlage® Cam and Housing Assembly	—	086589	0.5
<b>Electrified Options*</b>				
7116	Alarm Kit for 7000 Series Exit Devices	630	086553	2

### Stand-Alone Door Alarm

Model #	Description	Finish	FlashShip® #	Approx. Wt. Each (Lbs)
SDA16	Battery-operated door alarm	—	086030	3

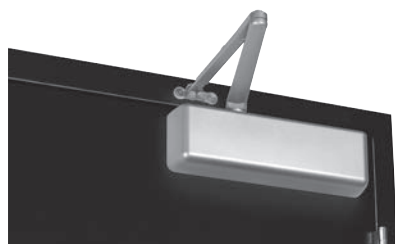
**ASSA ABLOY**  
Opening Solutions

Experience a safer  
and more open world

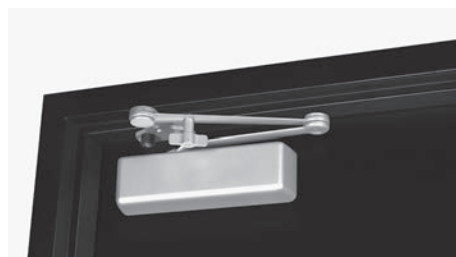
Fax 877-888-2772, email [flashship@assaabloy.com](mailto:flashship@assaabloy.com) or use  
Online Order Entry at [www.assaabloydss.com/extranet](http://www.assaabloydss.com/extranet) by clicking the FlashShip® icon

*Note: FlashShip® reserves the right to limit quantities.*

Copyright © 2017-2024, ASSA ABLOY Door Security Solutions, an ASSA ABLOY Group company. All rights reserved.  
Reproduction in whole or in part without the express written permission of ASSA ABLOY Door Security Solutions is prohibited.



5801 Non-Hold Open



5821T Hold Open

5800 Series: Cast Iron

Model #	Description	Finish	FlashShip® #	Approx. Wt. Each (Lbs)
<b>Non-Hold Open With Sleeve Nuts</b>				
5801 x SN	Multi-Size 1-6	689	085230	12
5801 x SN	Multi-Size 1-6	690	085351	12
5801 x BSP	Multi-Size 1-6	BSP	086601	12
<b>Non-Hold Open, With Sleeve Nuts</b>				
5821 x SN	Stop Only, Multi-Size 1-6	689	085232	14
5821 x SN	Stop Only, Multi-Size 1-6	690	085352	14
5831 x SNB	Stop Only, Multi-Size 1-6	689	086249	14
5831 x SNB	Stop Only, Multi-Size 1-6	690	086250	14
<b>Hold Open With Sleeve Nuts</b>				
5811 x SN	Multi-Size 1-6	689	085231	12
5811 x SN	Multi-Size 1-6	690	085353	12
<b>Hold Open, With Sleeve Nuts</b>				
5821T x SN	Holder/Stop Thumbturn, Multi-Size 1-6	689	085233	14
5821T x SN	Holder/Stop Thumbturn, Multi-Size 1-6	690	085354	14
5831T x SNB	Holder/Stop Thumbturn, Multi-Size 1-6	689	086251	14
5831T x SNB	Holder/Stop Thumbturn, Multi-Size 1-6	690	086252	14
<b>Accessories</b>				
SN-134	Sleeve Nut Pkg., 1-3/4" Door	689	085225	0.2
SN-134	Sleeve Nut Pkg., 1-3/4" Door	690	085355	0.2
5800RDP	Narrow Frame Drop Plate, Regular Arm	689	086031	4
5800RDP	Narrow Frame Drop Plate, Regular Arm	690	086032	4
5800PDP	Narrow Top Rail Drop Plate, Parallel Arm	689	086033	4
5800PDP	Narrow Top Rail Drop Plate, Parallel Arm	690	086034	4

Notes:

- Closers tri-packed
- SN-134 = 4 per pack; supplied standard with all 5800 door closers
- FlashShip® reserves the right to limit quantities
- For heavy-duty parallel rigid arm applications, specify 5821 or 5821T, stop is removable

Fax 877-888-2772, email flashship@assaabloy.com or use Online Order Entry at www.assaabloydss.com/extranet by clicking the FlashShip® icon

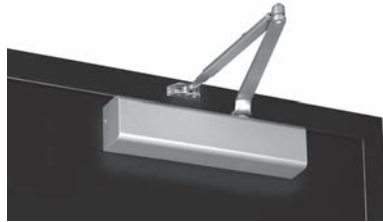
Note: FlashShip® reserves the right to limit quantities.

Copyright © 2017-2024, ASSA ABLOY Door Security Solutions, an ASSA ABLOY Group company. All rights reserved. Reproduction in whole or in part without the express written permission of ASSA ABLOY Door Security Solutions is prohibited.

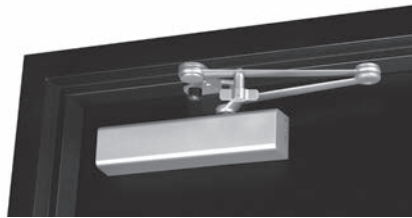
**ASSA ABLOY**  
Opening Solutions

Experience a safer  
and more open world

**ACCENTRA**  
**ASSA ABLOY**



2701 Non-Hold Open



2721T Hold Open

2700 Series: Architectural

Model #	Description	Finish	FlashShip® #	Approx. Wt. Each (Lbs)
<b>Non-Hold Open, With Sleeve Nuts</b>				
2701 x SN	Multi-Size 1-6	689	085191	6.5
2701 x SN	Multi-Size 1-6	690	085347	6.5
2701 x BSP	Multi-Size 1-6	BSP	086600	6.5
<b>Non-Hold Open, With Sleeve Nuts</b>				
2721 x SN	Spring Stop Arm, Multi-Size 1-6	689	085193	7.75
2721 x SN	Spring Stop Arm, Multi-Size 1-6	690	085348	7.75
<b>Hold Open, With Sleeve Nuts</b>				
2711 x SN	Multi-Size 1-6	689	085192	6.5
2711 x SN	Multi-Size 1-6	690	085349	6.5
<b>Hold Open, With Sleeve Nuts</b>				
2721T x SN	Holder/Stop Thumbturn, Multi-Size 1-6	689	085194	7.75
2721T x SN	Holder/Stop Thumbturn, Multi-Size 1-6	690	085350	7.75
2731T x SNB	Holder/Stop Thumbturn, Multi-Size 1-6	689	086247	8
2731T x SNB	Holder/Stop Thumbturn, Multi-Size 1-6	690	086248	8
<b>Non-Hold Open, With Sleeve Nuts</b>				
2731 x SNB	Spring Stop arm, Multi-Size 1-6	689	086245	8
2731 x SNB	Spring Stop arm, Multi-Size 1-6	690	086246	8
<b>Accessories</b>				
SN-134	Sleeve Nut Pkg., 1-3/4" Door	689	085225	0.2
SN-134	Sleeve Nut Pkg., 1-3/4" Door	690	085355	0.2
3148	Narrow Top Rail Drop Plate, Parallel Arm	689	086088	2
3148	Narrow Top Rail Drop Plate, Parallel Arm	690	086089	2
3158	Exposed-Back/Narrow Top Rail Drop Plate	689	086035	2
3158	Exposed-Back/Narrow Top Rail Drop Plate	690	086036	2

- Notes:
- Closers tri-packed
  - SN-134 = 4 per pack; supplied standard with all 2700 door closers
  - FlashShip® reserves the right to limit quantities
  - For heavy-duty parallel rigid arm applications, specify 2721 or 2721T, stop is removable

**ASSA ABLOY**  
Opening Solutions

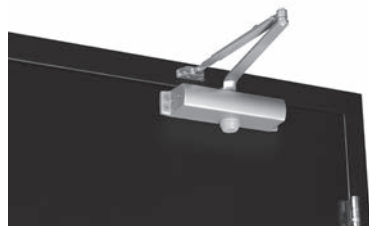
Experience a safer  
and more open world

Fax 877-888-2772, email flashship@assaabloy.com or use  
Online Order Entry at [www.assaabloydss.com/extranet](http://www.assaabloydss.com/extranet) by clicking the FlashShip® icon

Note: FlashShip® reserves the right to limit quantities.

Copyright © 2017-2024, ASSA ABLOY Door Security Solutions, an ASSA ABLOY Group company. All rights reserved.  
Reproduction in whole or in part without the express written permission of ASSA ABLOY Door Security Solutions is prohibited.





1101BF Non-Hold Open



YDC200 Standard Arm

### 1100 Series: Industrial

Model #	Description	Finish	FlashShip® #	Approx. Wt. Each (Lbs)
<b>Non-Hold Open With Sleeve Nuts</b>				
1101BF x SN	Multi-Size 1-4	689	085227	6
1101BF x SN	Multi-Size 1-4	690	085357	6
1101BF X BSP	Multi-Size 1-4	BSP	086602	6
1101BF COV x SN	Multi-Size 1-4, with Cover	689	086093	6
1101BF COV x SN	Multi-Size 1-4, with Cover	690	086094	6
1104BC x SNB	Size 4	689	086104	6
1104BC x SNB	Size 4	690	086105	6
<b>Hold Open With Sleeve Nuts</b>				
1111BF x SN	Multi-Size 1-4	689	085228	8
1111BF x SN	Multi-Size 1-4	690	085358	8
<b>Accessories</b>				
1100COV	Optional Cover for 1100 Series	689	085229	0.5
1100COV	Optional Cover for 1100 Series	690	085359	0.5
SN-134	Sleeve Nut Pkg., 1-3/4" Door	689	085225	0.2
SN-134	Sleeve Nut Pkg., 1-3/4" Door	690	085355	0.2
239BSS	5800 Series Blade Stop Spacer	689	086625	5

**Notes:**

- Closers tri-packed

- SN-134 = 4 per pack; supplied standard with all 1100 door closers

### YDC200 Series: Economy

Model #	Description	Finish	FlashShip® #	Approx. Wt. Each (Lbs)
YDC201	Tri-packed	689	086280	6
YDC204	Tri-packed	689	086281	6
YDC201	Tri-packed	690	086282	6
YDC204	Tri-packed	690	086283	6
SN-134	Sleeve Nuts	689	085225	0.2
SN-134	Sleeve Nuts	690	085355	0.2

Fax 877-888-2772, email [flashship@assaabloy.com](mailto:flashship@assaabloy.com) or use Online Order Entry at [www.assaabloydss.com/extranet](http://www.assaabloydss.com/extranet) by clicking the FlashShip® icon

Note: FlashShip® reserves the right to limit quantities.

Copyright © 2017-2024, ASSA ABLOY Door Security Solutions, an ASSA ABLOY Group company. All rights reserved. Reproduction in whole or in part without the express written permission of ASSA ABLOY Door Security Solutions is prohibited.

**ASSA ABLOY**  
Opening Solutions

Experience a safer  
and more open world

## ACCENTRA ASSA ABLOY



nexTouch®  
Cylindrical



nexTouch®  
Mortise



nexTouch®  
Exit Trim

Design	Model #	Description	Finish	Cylinder	FlashShip® #	Approx. Wt. Each (Lbs)
<b>Cylindrical With Cylinder Override</b>						
AU	NTB613-NR	Pushbutton keypad, no radio	626	1803-53L, 6-pin, PARA Keyed Random	086774	7.2
AU	NTB623-NR	Capacitive touchscreen, no radio	626	1803-53L, 6-pin, PARA Keyed Random	086775	7.2
AU	NTB613-NR	Pushbutton keypad, no radio	626	100CV1, 6-pin, Arrow Keyed Random	086776	7.2
AU	NTB623-NR	Capacitive touchscreen, no radio	626	100CV1, 6-pin, Arrow Keyed Random	086777	7.2
AU	NTB623-NR	Capacitive touchscreen, no radio	626	2803-53L, 6-pin, Schlage® C	086778	7.2
BAU	NTB623-NR	Capacitive touchscreen, no radio	626	Small Format Interchangeable Core, less core	086779	7.2
AU	NTB613-NR	Pushbutton keypad, no radio	626	2803-53L, 6-pin, Schlage® C	086780	7.2
BAU	NTB613-NR	Pushbutton keypad, no radio	626	Small Format Interchangeable Core, less core	086781	7.2
<b>Mortise Deadbolt with Cylinder Override</b>						
AU	NTM628-NR	Capacitive touchscreen, no radio	626	2153, PARA Keyed Random	086811	6
<b>Exit Device Trim with Cylinder Override</b>						
AU	NTT613-NR	Pushbutton keypad, no radio	626	2153, Keyed Random	086812	9.2
AU	NTT623-NR	Capacitive touchscreen, no radio	626	2153, Keyed Random	086813	9.2

**ASSA ABLOY**  
Opening Solutions

Experience a safer  
and more open world

Fax 877-888-2772, email [flashship@assaabloy.com](mailto:flashship@assaabloy.com) or use  
Online Order Entry at [www.assaabloydss.com/extranet](http://www.assaabloydss.com/extranet) by clicking the FlashShip® icon

Note: FlashShip® reserves the right to limit quantities.

Copyright © 2017-2024, ASSA ABLOY Door Security Solutions, an ASSA ABLOY Group company. All rights reserved.  
Reproduction in whole or in part without the express written permission of ASSA ABLOY Door Security Solutions is prohibited.



Fax 877-888-2772, email [flashship@assaabloy.com](mailto:flashship@assaabloy.com) or use  
Online Order Entry at [www.assaabloydss.com/extranet](http://www.assaabloydss.com/extranet) by clicking the FlashShip® icon  
Note: FlashShip® reserves the right to limit quantities.

Copyright © 2017-2024, ASSA ABLOY Door Security Solutions, an ASSA ABLOY Group company. All rights reserved.  
Reproduction in whole or in part without the express written permission of ASSA ABLOY Door Security Solutions is prohibited.

**ASSA ABLOY**  
Opening Solutions

Experience a safer  
and more open world



1502 Spring Hinge



TA2714 Five Knuckle Hinge

Model #	Size (in.)	Options	Finish	FlashShip® #	Approx. Wt. Each (Lbs)
<b>Spring Hinges - Standard Weight</b>					
1502	4-1/2" x 4-1/2"	—	US26D	085496	1
1502	4-1/2" x 4-1/2"	—	US3	086141	1
1502	4-1/2" x 4-1/2"	—	US10B	086143	1
1502	4-1/2" x 4-1/2"	—	BSP	086674	1
<b>3 Knuckle Hinges - Heavy Weight</b>					
TA786	4-1/2" x 4-1/2"	—	US26D	085521	2
<b>3 Knuckle Hinges - Standard Weight</b>					
TA714	4-1/2" x 4-1/2"	—	US26D	085520	1
<b>5 Knuckle Hinges - Standard Weight</b>					
TA2314	4-1/2" x 4-1/2"	—	US26D	085513	1
TA2314	4-1/2" x 4-1/2"	NRP	US26D	085514	1
TA2314	4-1/2" x 4-1/2"	—	US32D	085515	1
TA2314	4-1/2" x 4-1/2"	NRP	US32D	085516	1
T2714	4-1/2" x 4-1/2"	—	US26D	085498	1
T2714	4-1/2" x 4-1/2"	—	US10B	085497	1
T2714	4-1/2" x 4-1/2"	—	US10A	086240	1
TA2714	4-1/2" x 4-1/2"	—	USP	085499	1
TA2714	4-1/2" x 4-1/2"	—	US3	085500	1
TA2714	4-1/2" x 4-1/2"	—	US15	085502	1
TA2714	4-1/2" x 4-1/2"	—	US26	085503	1
TA2714	4-1/2" x 4-1/2"	—	US26D	085504	1
TA2714	4-1/2" x 4-1/2"	—	US10	085501	1
TA2714	4-1/2" x 4-1/2"	—	US10B	085506	1
TA2714	4-1/2" x 4-1/2"	—	US10A	086241	1
TA2714	4-1/2" x 4-1/2"	—	BSP	086670	1
TA2714	4-1/2" x 4-1/2"	NRP	US26D	085505	1
TA2714	4-1/2" x 4-1/2"	NRP	US10B	085507	1
TA2714	4-1/2" x 4-1/2"	NRP	US10A	086242	1
TA2714	4-1/2" x 4-1/2"	NRP	BSP	086671	1
TB2714	4-1/2" x 4-1/2"	—	US26D	085508	1
TA2714	5" x 4-1/2"	—	US26D	085509	1
<b>5 Knuckle Hinges - Heavy Weight</b>					
T4A3786	4-1/2" x 4-1/2"	—	US26D	085510	1.5
T4A3786	4-1/2" x 4-1/2"	—	BSP	086672	1.5
T4A3786	4-1/2" x 4-1/2"	NRP	US26D	085511	1.5
T4A3786	4-1/2" x 4-1/2"	—	USP	086086	1.5
T4A3786	4-1/2" x 4-1/2"	NRP	USP	086087	1.5
T4A3786	5" x 4-1/2"	—	US26D	085512	2
T4A3386	4-1/2" x 4-1/2"	—	US32D	085517	1.5
T4A3386	4-1/2" x 4-1/2"	NRP	US32D	085518	1.5
T4A3386	5" x 4-1/2"	NRP	US32D	085519	2

McKinney hinges on this page sold in quantities of 3

**ASSA ABLOY**  
Opening Solutions

Experience a safer  
and more open world

Fax 877-888-2772, email [flashship@assaabloy.com](mailto:flashship@assaabloy.com) or use  
Online Order Entry at [www.assaabloydss.com/extranet](http://www.assaabloydss.com/extranet) by clicking the FlashShip® icon

Note: FlashShip® reserves the right to limit quantities.

Copyright © 2017-2024, ASSA ABLOY Door Security Solutions, an ASSA ABLOY Group company. All rights reserved.  
Reproduction in whole or in part without the express written permission of ASSA ABLOY Door Security Solutions is prohibited.



MPB79



MPB99

Model #	Size (in.)	Options	Finish	FlashShip® #	Approx. Wt. Each (Lbs)
<b>MacPro® Hinges</b>					
MPB79	4-1/2" x 4-1/2"	—	US26D	085527	1
MPB79	4-1/2" x 4-1/2"	NRP	US26D	085528	1
MPB79	4-1/2" x 4-1/2"	—	USP	085529	1
MPB79	4-1/2" x 4-1/2"	—	10BE	086095	1
MPB79	4-1/2" x 4-1/2"	NRP	10BE	086096	1
MPB79	4-1/2" x 4-1/2"	NRP	USP	086130	1
MPB79	4-1/2" x 4-1/2"	—	US3	086131	1
MPB79	4-1/2" x 4-1/2"	—	US26	086132	1
MPB79	4-1/2" x 4-1/2"	—	US10B	086133	1
MPB79	4-1/2" x 4-1/2"	NRP	US10B	086134	1
MPB79	4-1/2" x 4-1/2"	—	BSP	086673	1
MPB91	4-1/2" x 4-1/2"	—	US32D	085530	1
MPB91	4-1/2" x 4-1/2"	NRP	US32D	085531	1
MP79	4-1/2" x 4-1/2"	—	US26D	085532	1.5
MP79	4-1/2" x 4-1/2"	—	US10BE	086097	1.5
MP79	4-1/2" x 4-1/2"	—	USP	086135	1.5
MP79	4-1/2" x 4-1/2"	—	US3	086137	1.5
MP79	4-1/2" x 4-1/2"	—	US26	086138	1.5
MP79	4-1/2" x 4-1/2"	NRP	US26D	086139	1.5
MP79	4-1/2" x 4-1/2"	—	US10B	086140	1.5
MPB68	4-1/2" x 4-1/2"	—	US26D	085533	1.5
MPB68	4-1/2" x 4-1/2"	NRP	US26D	085534	1.5
MPB99	4-1/2" x 4-1/2"	—	US32D	085535	1.5
MPB99	4-1/2" x 4-1/2"	NRP	US32D	085536	1.5
MPS60	4-1/2" x 4-1/2"	—	US26D	085537	1
MPS60	4-1/2" x 4-1/2"	—	BSP	086675	1

McKinney hinges on this page sold in quantities of 3

Fax 877-888-2772, email [flashship@assaabloy.com](mailto:flashship@assaabloy.com) or use  
Online Order Entry at [www.assaabloydss.com/extranet](http://www.assaabloydss.com/extranet) by clicking the FlashShip® icon

Note: FlashShip® reserves the right to limit quantities.

Copyright © 2017-2024, ASSA ABLOY Door Security Solutions, an ASSA ABLOY Group company. All rights reserved.  
Reproduction in whole or in part without the express written permission of ASSA ABLOY Door Security Solutions is prohibited.

**ASSA ABLOY**  
Opening Solutions

Experience a safer  
and more open world

**McKinney**



ElectroLynx® Hinge



Hinge Pin Door Stop

Model #	Size (in.)	Options	Finish	FlashShip® #	Approx. Wt. Each (Lbs)
<b>ElectroLynx® Hinges</b>					
TA2714	4-1/2" x 4-1/2"	QC4	US26D	085522	1
TA2714	4-1/2" x 4-1/2"	QC8	US26D	085524	1
TA2714	4-1/2" x 4-1/2"	QC12	US26D	085526	1
T4A3786	4-1/2" x 4-1/2"	QC4	US26D	085523	1.5
T4A3786	4-1/2" x 4-1/2"	QC8	US26D	085525	1.5
<b>ElectroLynx® Cables</b>					
QC-C003	3"	12 Wire 22AWG	—	085538	0.1
QC-C206	32"	12 Wire 22AWG	—	085540	0.1
QC-C300	38"	12 Wire 22AWG	—	085541	0.1
QC-C306	44"	12 Wire 22AWG	—	085542	0.2
QC-C400	50"	12 Wire 22AWG	—	085543	0.2
QC-C1500	15'2"	12 Wire 22AWG	—	085544	0.7
QC-C003P	3"	12 WIRE 22AW	—	086766	0.1
QC-C206P	32"	12WIRE 22AWG	—	086767	0.1
QC-C300P	38"	12WIRE 22AWG	—	086768	0.1
QC-C400P	50"	12WIRE 22AWG	—	086769	0.2
QC-C1500P	15'2'	12 Wire 22AWG	—	085545	0.7
<b>Hinge Pin Door Stop</b>					
MK76305	4-1/2"	Use with MP79/MPB79	26D	086508	1
MK76306	4-1/2"	Use with T2714/TA2714	26D	086509	1

**ASSA ABLOY**  
Opening Solutions

Experience a safer  
and more open world

Fax 877-888-2772, email [flashship@assaabloy.com](mailto:flashship@assaabloy.com) or use  
Online Order Entry at [www.assaabloydss.com/extranet](http://www.assaabloydss.com/extranet) by clicking the FlashShip® icon

*Note: FlashShip® reserves the right to limit quantities.*

Copyright © 2017-2024, ASSA ABLOY Door Security Solutions, an ASSA ABLOY Group company. All rights reserved.  
Reproduction in whole or in part without the express written permission of ASSA ABLOY Door Security Solutions is prohibited.





**PEMCO**  
**ASSA ABLOY**

Fax 877-888-2772, email [flashship@assaabloy.com](mailto:flashship@assaabloy.com) or use  
Online Order Entry at [www.assaabloydss.com/extranet](http://www.assaabloydss.com/extranet) by clicking the FlashShip® icon  
*Note: FlashShip® reserves the right to limit quantities.*

Copyright © 2017-2024, ASSA ABLOY Door Security Solutions, an ASSA ABLOY Group company. All rights reserved.  
Reproduction in whole or in part without the express written permission of ASSA ABLOY Door Security Solutions is prohibited.

**ASSA ABLOY**  
Opening Solutions

Experience a safer  
and more open world

Fax FlashShip orders to 866-680-1024 or email to [flashship@assaabloy.com](mailto:flashship@assaabloy.com)



Markar 300 Series Hinges

Model #	Description	FlashShip® #	Approx. Wt. Each (Lbs)
<b>14 Gauge Stainless Steel Pin &amp; Barrel Continuous Hinges</b>			
FM300-83	Markar Edge Mount Pin & Barrel Hinge, Stainless Steel, 83-1/8" Long	085546	12.9
FM300-95	Markar Edge Mount Pin & Barrel Hinge, Stainless Steel, 95" Long	085547	14.8
FM300-79	Markar Edge Mount Pin & Barrel Hinge, Stainless Steel, 79-3/16" Long	085548	12.5
HG305-83	Markar Edge Mount Pin & Barrel Hinge Guard, Double Return, Stainless Steel, 83-1/8" Long	085549	13.5
HG305-95	Markar Edge Mount Pin & Barrel Hinge Guard, Double Return, Stainless Steel, 95" Long	085550	15.5
HG315-83	Markar Edge Mount Pin & Barrel Hinge Guard, Single Return, Stainless Steel, 83-1/8" Long	085551	13.3
<b>Privacy Door Latches</b>			
PDLAA26D	Privacy Door Latch, Satin Chrome	086612	1
PDLAABSP	Privacy Door Latch, Black Suede Powder Coat	086613	1

**ASSA ABLOY**  
Opening Solutions

Experience a safer  
and more open world

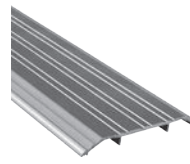
Fax 877-888-2772, email [flashship@assaabloy.com](mailto:flashship@assaabloy.com) or use  
Online Order Entry at [www.assaabloydss.com/extranet](http://www.assaabloydss.com/extranet) by clicking the FlashShip® icon

*Note: FlashShip® reserves the right to limit quantities.*

Copyright © 2017-2024, ASSA ABLOY Door Security Solutions, an ASSA ABLOY Group company. All rights reserved.  
Reproduction in whole or in part without the express written permission of ASSA ABLOY Door Security Solutions is prohibited.



170A Threshold



171A Threshold

Model #	Description	FlashShip® #	Approx. Wt. Each (Lbs)
<b>Thresholds</b>			
151A36	3" Flat Saddle Threshold, 1/4" High, 36" Long	085553	1.4
154A36	5" Flat Saddle Threshold, 1/4" High, 36" Long	085554	2.8
158A36	5-1/2" Offset Saddle Threshold, 1/4" to 1/2" high, 36" Long	086708	3
170A36	4" Fluted Saddle Threshold, 1/2" High, 36" Long	085555	2.1
170A72	4" Fluted Saddle Threshold, 1/2" High, 72" Long	085558	4.1
170D36	4" Fluted Saddle Threshold, 1/2" High, 36" Long, Dark Bronze	085559	2.1
170A48	4" Fluted Saddle Threshold, 1/2" High, 48" Long	085557	2.8
170A36WS/PA	4" Fluted Saddle Threshold, 1/2" High, 36" Long with Wood Screws and Plastic Anchors	085556	2.1
171A36	5" Fluted Saddle Threshold, 1/2" High, 36" Long	085561	2.7
171A36WS/PA	5" Fluted Saddle Threshold, 1/2" High, 36" Long, With Wood Screws and Plastic Anchors	085562	2.7
171A48	5" Fluted Saddle Threshold, 1/2" High, 48" Long	085563	3.6
171A72	5" Fluted Saddle Threshold, 1/2" High, 72" Long	085564	5.4
171D36	5" Fluted Saddle Threshold, 1/2" High, 36" Long, Dark Bronze	085565	2.7
1715A36	5" Heavy Duty Saddle Threshold, 1/2" High, 36" Long	085560	5.2
172A36	6" Fluted Saddle Threshold, 1/2" High, 36" Long	085566	3.1
172A48	6" Fluted Saddle Threshold, 1/2" High, 48" Long	085567	4.1
172A72	6" Fluted Saddle Threshold, 1/2" High, 72" Long	085568	5.5
172D36	6" Fluted Saddle Threshold, 1/2" High, 36" Long, Dark Bronze	085569	3.1
176A36	7" Saddle Threshold, 1/2" High, 36" Long	086709	3
2548A36	8" Fluted Saddle Threshold, 1/2" High, 36" Long	085601	4
2548A72	8" Fluted Saddle Threshold, 1/2" High, 72" Long	085602	8
270A36	4" Fluted Saddle Threshold, 1/4" High, 36" Long	085603	2
181AV36	Latching Panic Exit Saddle, Mill Finish Aluminum, Gray Eco-V™ Gasket, 1" high, 5" wide, 36" long. Supplied with #10 wood screws.	086626	2
181AV48	Latching Panic Exit Saddle, Mill Finish Aluminum, Gray Eco-V™ Gasket, 1" high, 5" wide, 48" long. Supplied with #10 wood screws.	086627	4
181AV72	Latching Panic Exit Saddle, Mill Finish Aluminum, Gray Eco-V™ Gasket, 1" high, 5" wide, 72" long. Supplied with #10 wood screws.	086628	7
270A72	4" Fluted Saddle Threshold, 1/4" High, 72" Long	085604	3.9
271A36	5" Fluted Saddle Threshold, 1/4" High, 36" Long	085606	2.5
271A48	5" Fluted Saddle Threshold, 1/4" High, 48" Long	085608	3.3
271A72	5" Fluted Saddle Threshold, 1/4" High, 72" Long	085609	5
271D36	5" Fluted Saddle Threshold, 1/4" High, 36" Long, Dark Bronze	085610	2.5
272A36	6" Fluted Saddle Threshold, 1/4" High, 36" Long	085611	3
272A48	6" Fluted Saddle Threshold, 1/4" High, 48" Long	085613	4
272A72	6" Fluted Saddle Threshold, 1/4" High, 72" Long	085614	6.1
272D36	6" Fluted Saddle Threshold, 1/4" High, 36" Long, Dark Bronze	085615	3
2727A36	7" Offset Saddle Threshold, 1/4" to 1/2" high, 36" Long	086710	3
2748A36	8" Fluted Saddle Threshold, 1/4" High, 36" Long	085616	3.9
2748A72	8" Fluted Saddle Threshold, 1/4" High, 72" Long	085617	7.8

Fax 877-888-2772, email [flashship@assaabloy.com](mailto:flashship@assaabloy.com) or use  
Online Order Entry at [www.assaabloydss.com/extranet](http://www.assaabloydss.com/extranet) by clicking the FlashShip® icon

Note: FlashShip® reserves the right to limit quantities.

Copyright © 2017-2024, ASSA ABLOY Door Security Solutions, an ASSA ABLOY Group company. All rights reserved.  
Reproduction in whole or in part without the express written permission of ASSA ABLOY Door Security Solutions is prohibited.

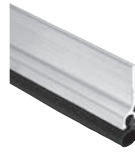
**ASSA ABLOY**  
Opening Solutions

Experience a safer  
and more open world

**PEMKO**



210AV Door Shoe



303AS Jamb Set

Model #	Description	FlashShip® #	Approx. Wt. Each (Lbs)
<b>Thresholds (Cont.)</b>			
276A36	6" Saddle Threshold, 1/4" High, 36" Long	086711	3
2005AV36	5" Latching Panic Threshold, 1/2" High, 36" Long with Gray Eco-V® Insert	086716	2.8
2005AV48	5" Latching Panic Threshold, 1/2" High, 48" Long with Gray Eco-V® Insert	086707	5.6
2005AT36	5" Latching Panic Threshold, 1/2" High, 36" Long with TPE Seal	085584	2.5
2005AT48	5" Latching Panic Threshold, 1/2" High, 48" Long with TPE Seal	085585	3.3
2005AT72	5" Latching Panic Threshold, 1/2" High, 72" Long with TPE Seal	085586	5
2008APK36	4" Acoustic Threshold, 1/2" High, 36" Long with Encased Foam Seal	085587	1.7
252X3AFG36	5-1/8" Thermal Barrier Saddle Threshold, 1/2" High, 36" Long	085600	3.3
EV232BL36	Eco-V® Hospitality Threshold, Carpet to Carpet, Black, 36" Long	086374	2.1
EV2322BL-36	Eco-V® Threshold, Carpet to VCT, Black, 36" Long	086712	2.1
EV2325BL36	Eco-V® Hospitality Threshold, Carpet to Tile, Black, 36" Long	086375	1.9
<b>Door Shoes</b>			
210AV36	Aluminum L Shape Door Shoe, Drip Ledge, Vinyl Bottom Seal, 36"	085588	1
210DV36	Dark, Aluminum L Shape Door Shoe, Drip Ledge, Vinyl Bottom Seal, 36"	085589	1
210DV48	Dark, Aluminum L Shape Door Shoe, Drip Ledge, Vinyl Bottom Seal, 48"	085590	1.2
216AV36	Aluminum U Shape Door Shoe, Drip Ledge, Vinyl Bottom Seal, 1-3/4" Door, 36"	085591	1.2
216BSPV36	BSP U Shape Door Shoe, Drip Ledge, Vinyl Bottom Seal, 1-3/4" Door, 36"	086651	1.2
216DV36	Dark, Aluminum U Shape Door Shoe, Drip Ledge, Vinyl Bottom Seal, 1-3/4" Door, 36"	085592	1.2
216PWV36	White Suede Powder Coat, Aluminum U Shape Door Shoe, Drip Ledge, Vinyl Bottom Seal, 1-3/4" Door, 36"	086773	1.2
217AV36	Door Shoe, Wrap Around, Eco-V® Seal, 36"	086713	1
2173AV36	Aluminum U Shape Door Shoe, Notched Vinyl Bottom Seal, 1-3/4" Door, 36"	085595	1
2173DV36	Dark, Aluminum U Shape Door Shoe, Notched Vinyl Bottom Seal, 1-3/4" Door, 36"	085596	1
221AV36	Aluminum U Shape 3" Door Shoe/Kickplate, Vinyl Bottom Seal, 1-3/4" Door, 36"	085597	3.1
222APK36	Door Shoe, Wrap Around, Eco-V Seal, 36"	086714	1
2343AV36	Aluminum Door Shoe, Notched Vinyl Bottom Seal, 1-3/16" Wide, 36"	085598	1
<b>Jamb Sets</b>			
303AS3684	Silicone Perimeter Door Seal Kit, Aluminum Channel, 36" x 84" Opening	085629	1.2
303AS7284	Silicone Perimeter Door Seal Kit, Aluminum Channel, 72" x 84" Opening	085630	1.4
303BSPV3684	Silicone Perimeter Door Seal Kit, BSP Aluminum Channel, 36" x 84" Opening	086652	1.2
303DS3684	Silicone Perimeter Door Seal Kit, Dark Bronze Aluminum Channel, 36" x 84" Opening	085634	1.2
303AV3684	Vinyl Perimeter Door Seal Kit, Aluminum Channel, 36" x 84" Opening	085631	1.2
303AV3684TK	Vinyl Perimeter Door Seal Kit w/Tek Screws, Aluminum Channel, 36" x 84" Opening	085632	1.2
303DV3684	Vinyl Perimeter Door Seal Kit, Dark Bronze Aluminum Channel, 36" x 84" Opening	085635	1.2
303AV7284	Vinyl Perimeter Door Seal Kit, Aluminum Channel, 72" x 84" Opening	085633	1.4
305CR3684	Perimeter Gasketing, Clear Aluminum Black Sponge EPDM Insert, 36" x 84" Opening	085638	1.2

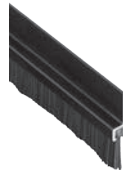
**ASSA ABLOY**  
Opening Solutions

Experience a safer  
and more open world

Fax 877-888-2772, email [flashship@assaabloy.com](mailto:flashship@assaabloy.com) or use  
Online Order Entry at [www.assaabloydss.com/extranet](http://www.assaabloydss.com/extranet) by clicking the FlashShip® icon

Note: FlashShip® reserves the right to limit quantities.

Copyright © 2017-2024, ASSA ABLOY Door Security Solutions, an ASSA ABLOY Group company. All rights reserved.  
Reproduction in whole or in part without the express written permission of ASSA ABLOY Door Security Solutions is prohibited.



18061DNB Brush Door Sweep



345DV Door Bottom Sweep

Model #	Description	FlashShip® #	Approx. Wt. Each (Lbs)
<b>Jamb Sets (Cont.)</b>			
305CN84	Split Astragal/Meeting Stile Seal, Clear Aluminum, Black Neoprene Insert, 84"	085636	0.5
305CN96	Split Astragal/Meeting Stile Seal, Clear Aluminum, Black Neoprene Insert, 96"	085637	0.6
319CN3684	Perimeter Gasketing, Clear Anodized Aluminum with Black EPDM insert, 36" x 84" Opening	085645	1.8
332CR3684	Perimeter Gasketing, Clear Anodized Aluminum with Black Sponge EPDM insert, 36" x 84" Opening	085646	1.4
<b>Brush Door Sweeps/Seal</b>			
18041DNB84	Brush Meeting Stile, Dark Bronze Anodized Aluminum, 3/8" Black Brush, 84" Long	086702	0.6
18061CNB36	Brush Door Sweep, 3/4" Clear Aluminum Channel, 5/8" Brush, 36" Long	085571	0.4
18061CNB36xBL	Brush Door Sweep, 3/4" Clear Aluminum Channel, 5/8" Black Brush, 36" Long	086680	0.5
18061CNB48	Brush Door Sweep, 3/4" Clear Aluminum Channel, 5/8" Brush, 48" Long	085572	0.5
18061CNB48xBL	Brush Door Sweep, 3/4" Clear Aluminum Channel, 5/8" Black Brush, 48" Long	086681	0.5
18061CNB84	Door Seal, 3/4" Clear Aluminum Channel, 5/8" Brush, 84" Long	085573	0.9
18061CNB84xBL	Door Seal, 3/4" Clear Aluminum Channel, 5/8" Black Brush, 84" Long	086682	0.5
18061CNB96	Door Seal, 3/4" Clear Aluminum Channel, 5/8" Brush, 96" Long	085574	1.2
18061DNB36	Brush Door Sweep, 3/4" Dark Bronze Aluminum Channel, 5/8" Brush, 36" Long	085575	0.4
18061BSPNB36	Door Seal, 3/4" BSP Aluminum Channel, 5/8" Brush, 36" Long	086653	0.4
18061DNB84	Door Seal, 3/4" Dark Bronze Aluminum Channel, 5/8" Brush, 84" Long	085576	0.9
18062CNB36	Brush Door Sweep, 7/8" Clear Aluminum Channel, 5/8" Brush, 36" Long	085577	0.6
18062CNB48	Brush Door Sweep, 7/8" Clear Aluminum Channel, 5/8" Brush, 48" Long	085578	0.5
18062CNB84	Door Seal, 7/8" Clear Aluminum Channel, 5/8" Brush, 84" Long	085579	0.9
18062DNB36	Brush Door Sweep, 7/8" Dark Bronze Aluminum Channel, 5/8" Brush, 36" Long	085580	0.5
18100CNB36	Brush Door Sweep, 7/8" Clear Aluminum Channel, 1" Brush, 36" Long	085581	0.5
18100CNB48	Brush Door Sweep, 7/8" Clear Aluminum Channel, 1" Brush, 48" Long	085582	0.7
18100DNB36	Brush Door Sweep, 7/8" Dark Bronze Anodized Aluminum, 1" Brush, 36" Long	086700	0.6
18100DNB48	Brush Door Sweep, 7/8" Dark Bronze Anodized Aluminum, 1" Brush, 48" Long	086701	0.7
18137CNB36	Brush Door Sweep, 7/8" Clear Aluminum Channel, 1-3/8" Brush, 36" Long	085583	0.5
29324CNB84	Snap Cover W/S, Clear Anodized Aluminum, Gray Nylon Brush, 84"	085625	1.5
29326CNB36	Snap Cover Weatherstrip, Clear Anodized Aluminum, 1/4" x 7/8", with 5/8" Gray Nylon Brush, 36"	085626	0.8
315BSPN36	Neoprene Door Sweep, 1-1/4" BSP Channel, 7/16" Neoprene, 36" Long	086654	0.4
315BSPN48	Neoprene Door Sweep, 1-1/4" BSP Channel, 7/16" Neoprene, 48" Long	086655	0.8
315CN36	Neoprene Door Sweep, 1-1/4" Clear Aluminum Channel, 7/16" Neoprene, 36" Long	085639	0.4
315CN36TK	Neoprene Door Sweep w/Tek Screws, 1-1/4" Clear Aluminum Channel, 7/16" Neoprene, 36" Long	085640	0.4
315CN42	Neoprene Door Sweep, 1-1/4" Clear Aluminum Channel, 7/16" Neoprene, 42" Long	085641	0.5
315CN48	Neoprene Door Sweep, 1-1/4" Clear Aluminum Channel, 7/16" Neoprene, 48" Long	085642	1

Fax 877-888-2772, email [flashship@assaabloy.com](mailto:flashship@assaabloy.com) or use Online Order Entry at [www.assaabloydss.com/extranet](http://www.assaabloydss.com/extranet) by clicking the FlashShip® icon  
 Note: FlashShip® reserves the right to limit quantities.

Copyright © 2017-2024, ASSA ABLOY Door Security Solutions, an ASSA ABLOY Group company. All rights reserved. Reproduction in whole or in part without the express written permission of ASSA ABLOY Door Security Solutions is prohibited.

**ASSA ABLOY**  
Opening Solutions

Experience a safer  
and more open world



**PEMKO**



346C Rain Drip



411APKL Automatic Door Bottom

Model #	Description	FlashShip® #	Approx. Wt. Each (Lbs)
<b>Brush Door Sweeps/Seal (Cont.)</b>			
315DN36	Neoprene Door Sweep, 1-1/4" Dark Bronze Aluminum Channel, 7/16" Neoprene, 36" Long	085643	0.4
315DN48	Neoprene Door Sweep, 1-1/4" Dark Bronze Aluminum Channel, 7/16" Neoprene, 48" Long	085644	1
307AV36	Door Bottom Sweep, 7/8" Gray Aluminum Channel, 1" Vinyl, 36" Long	086120	0.4
307AV48	Door Bottom Sweep, 7/8" Gray Aluminum Channel, 1" Vinyl, 48" Long	086121	0.4
345AV36	Door Bottom Sweep w/Rain Drip, Mill Finish Aluminum, Gray Vinyl Insert, 36" Long	085652	0.5
345AV48	Door Bottom Sweep w/Rain Drip, Mill Finish Aluminum, Gray Vinyl Insert, 48" Long	085653	0.6
345BSPV36	Door Bottom Sweep w/Rain Drip, BSP Aluminum, Gray Vinyl Insert, 36" Long	086656	0.5
345DV36	Door Bottom Sweep w/Rain Drip, Dark Bronze Aluminum, Gray Vinyl Insert, 36" Long	085655	0.5
345ANB36	Door Bottom Sweep w/Rain Drip, Mill Finish Aluminum, Nylon Brush Insert, 36" Long	085650	0.5
345A36	Door Bottom Rain Drip, Mill Finish Aluminum, 36" Long	085649	0.5
345D36	Door Bottom Rain Drip, Dark Bronze Aluminum, 36" Long	085654	0.5
345ANB48	Door Bottom Sweep with Rain Drip, Mill Finish Aluminum, Nylon Brush Insert, 48" Long	085651	0.6
3452CNB36	Door Bottom Sweep with Rain Drip, Clear Aluminum, Nylon Brush Insert, 36" Long	085648	0.5
3452AV36	Door Bottom Sweep with Rain Drip, Mill Finish Aluminum, Vinyl Insert, 36" Long	085647	0.5
<b>Overlapping Astragals</b>			
357SP84	Overlapping Astragals, 1/8" Thick, 2" Wide, Galvanized Steel (11 ga), 84" Long	085661	5.9
357C84	Overlapping Astragals, 1/8" Thick, 2" Wide, Clear Anodized Aluminum, 84" Long	085659	2.1
357SP96	Overlapping Astragals, 1/8" Thick, 2" Wide, Galvanized Steel (11 ga), 96" Long	085662	6.8
357SS84	Overlapping Astragals, 1/8" Thick, 2" Wide, Stainless Steel (11 ga), 84" Long	085663	9
357C96	Overlapping Astragals, 1/8" Thick, 2" Wide, Clear Anodized Aluminum, 96" Long	085660	2.4
3572SP96	Offset/Overlapping Security Astragal, Galvanized Steel, 96"	086699	8
<b>Meeting Stile Split Astragal</b>			
18041CNB84	Brush Meeting Stile Gasketing, 3/4" Clear Aluminum Channel, 3/8" Exposed Brush, 1 piece @84"	085570	0.9
18061CNB84	Brush Door Sweep, 3/4" Clear Aluminum Channel, 5/8" Brush, 84" Long	085573	0.9
18061CNB96	Brush Door Sweep, 3/4" Clear Aluminum Channel, 5/8" Brush, 96" Long	085574	1.2
18061DNB84	Brush Door Sweep, 3/4" Dark Bronze Aluminum Channel, 5/8" Brush, 84" Long	085576	0.9
18062CNB84	Brush Door Sweep, 7/8" Clear Aluminum Channel, 5/8" Brush, 84" Long	085579	0.9
29310CS84	Straight Snap-Cover Meeting Stile, Clear Anodized Aluminum, Silicone Seal, 1 piece @84"	085623	1.5
29324CNB84	Snap Cover W/S, Clear Anodized Aluminum, 1/4" x 7/8", with 3/8" Gray Nylon Brush, 1 piece @84"	085625	1.5
369AP84	Meeting Stile Mill Aluminum Pile Insert, 84"	085664	0.3
355CS84	T-Astragal, 84"	086144	0.9
<b>Rain Drip</b>			
346BSP40	Door Top Rain Drip, 2-1/2" BSP Projection, 40" Long	086657	1.2
346BSP76	Door Top Rain Drip, 2-1/2" BSP Projection, 76" Long	086658	2.2
346C40	Door Top Rain Drip, 2-1/2" Clear Aluminum Projection, 40" Long	085656	1.2
346C52	Door Top Rain Drip, 2-1/2" Clear Aluminum Projection, 52" Long	085657	1.5
346C76	Door Top Rain Drip, 2-1/2" Clear Aluminum Projection, 76" Long	085658	2.2

**ASSA ABLOY**  
Opening Solutions

Experience a safer  
and more open world

Fax 877-888-2772, email [flashship@assaabloy.com](mailto:flashship@assaabloy.com) or use  
Online Order Entry at [www.assaabloydss.com/extranet](http://www.assaabloydss.com/extranet) by clicking the FlashShip® icon

Note: FlashShip® reserves the right to limit quantities.

Copyright © 2017-2024, ASSA ABLOY Door Security Solutions, an ASSA ABLOY Group company. All rights reserved.  
Reproduction in whole or in part without the express written permission of ASSA ABLOY Door Security Solutions is prohibited.





346C Rain Drip



411APKL Automatic Door Bottom

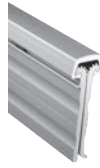
Model #	Description	FlashShip® #	Approx. Wt. Each (Lbs)
<b>Automatic Door Bottoms</b>			
411APKL36	Full Mortised Auto Door Bottom, 1-3/8" x 9/16" Aluminum Channel, PemkoPrene™ Insert, Low Closing Force	085667	1.5
411ARL32	Full Mortised Auto Door Bottom, Mill Finish Aluminum with Black Sponge EPDM Insert, 32" Long	085668	1.3
411ARL36	Full Mortised Auto Door Bottom, 1-3/8" x 9/16" Aluminum Channel, Sponge EPDM Insert, Low Closing Force, 36" Long	085669	1.5
411ARL42	Full Mortised Auto Door Bottom, 1-3/8" x 9/16" Aluminum Channel, Sponge EPDM Insert, Low Closing Force, 42" Long	086684	1.75
411ARL48	Full Mortised Auto Door Bottom, 1-3/8" x 9/16" Aluminum Channel, Sponge EPDM Insert, Low Closing Force, 48" Long	086685	2
411ANBL36	Full Mortised Auto Door Bottom, Mill Finish Aluminum w/ Black Nylon Brush Insert, 36" Long	085666	1.5
412CRL36	Mortised Automatic Door Bottom, Sponge EPDM Seal, 3/4" Max Drop, 36" Long	086691	1.5
412CRL48	Surface Mounted Automatic Door Bottom, Clear Anodized Aluminum, Sponge EPDM Seal, 3/4" Max Drop, 48" Long	086692	2
412DRL36	Surface Mounted Automatic Door Bottom, Dark Bronze Anodized Aluminum, Sponge EPDM Seal, 3/4" Max Drop, 36" Long	086693	1.5
434APKL36	Full Mortised Auto Door Bottom, 1-5/16" x 27/32" Aluminum Channel, PemkoPrene™ Insert, 36" Long	085673	1.6
434ARL36	Full Mortised Auto Door Bottom, Mill Finish Aluminum with Black Sponge EPDM Insert, 36" Long	085674	2.5
434ARL48	Full Mortised Auto Door Bottom, Mill Finish Aluminum with Black Sponge EPDM Insert, 48" Long	086690	3.3
4131BSPRL36	Surface and Semi Mortised Auto Door Bottom, BSP Aluminum, Black Sponge EPDM Insert, 36" Long	086659	2
4131CRL36	Surface and Semi Mortised Auto Door Bottom, Clear Aluminum, Black Sponge EPDM Insert, 36" Long	085671	1.5
4131CRL42	Surface or Semi-Mortised Automatic Door Bottom, Sponge EPDM Seal, 3/4" Max Drop, 42" Long	086694	1.75
4131CRL48	Surface or Semi-Mortised Automatic Door Bottom, Sponge EPDM Seal, 3/4" Max Drop, 48" Long	086695	2
4131CPKL36	Surface and Semi Mortised Auto Door Bottom, Clear Aluminum, Black PemkoPrene™ Insert, 36" Long	085670	1.5
4131DRL36	Surface and Semi Mortised Auto Door Bottom, Dark Bronze Aluminum, Black Sponge EPDM Insert, 36" Long	085672	1.5
STC411APK36	Acoustic Automatic Door Bottom, Clear Aluminum 36" Long	086485	1.5
STC411APK42	Acoustic Automatic Door Bottom, Clear Aluminum 42" Long	086486	1.5
STC411APK48	Acoustic Automatic Door Bottom, Clear Aluminum, 48" Long	086487	1.5
STC4131CPK36	Acoustic Automatic Door bottom, Clear Aluminum, 36" Long	086488	1.5
STC4131DPK36	Acoustic Automatic Door Bottom, Dark Bronze Aluminum, 36" Long	086489	1.5
420APKL36	Hollow Metal Automatic Door Bottom, PemkoPrene Seal, 1/2" Max Drop, 36" Long	086686	1.5
420APKL48	Hollow Metal Automatic Door Bottom, PemkoPrene Seal, 1/2" Max Drop, 48" Long	086687	2
4301CRL36	Surface or Semi-Mortised Automatic Door Bottom, Sponge EPDM Seal, 3/4" Max Drop, 36" Long	086688	1.5
4301CRL48	Surface or Semi-Mortised Automatic Door Bottom, Sponge EPDM Seal, 3/4" Max Drop, 48" Long	086689	2

Fax 877-888-2772, email [flashship@assaabloy.com](mailto:flashship@assaabloy.com) or use Online Order Entry at [www.assaabloydss.com/extranet](http://www.assaabloydss.com/extranet) by clicking the FlashShip® icon  
 Note: FlashShip® reserves the right to limit quantities.

Copyright © 2017-2024, ASSA ABLOY Door Security Solutions, an ASSA ABLOY Group company. All rights reserved. Reproduction in whole or in part without the express written permission of ASSA ABLOY Door Security Solutions is prohibited.

**ASSA ABLOY**  
Opening Solutions

Experience a safer  
and more open world



CFM Continuous Geared Hinges



CFS-CP Continuous Geared Hinges

Model #	Description	FlashShip® #	Approx. Wt. Each (Lbs)
<b>Aluminum Geared Continuous Hinges</b>			
CFM83HD1	Continuous Geared Hinge, Full Mortise, Clear Aluminum, Heavy Duty 83"	085677	6.3
CFM83SLF-HD1	Continuous Geared Hinge, Full Mortise, Short Leaf Flush, Clear Aluminum, Heavy Duty 83"	085678	6
CFM83SLI-HD1	Continuous Geared Hinge, Full Mortise, Short Leaf Inset, Clear Aluminum, Heavy Duty 83"	085679	5.5
CFM95HD1	Continuous Geared Hinge, Full Mortise, Clear Aluminum, Heavy Duty 95"	085680	7.2
CFM95SLF-HD1	Continuous Geared Hinge, Full Mortise, Short Leaf Flush, Clear Aluminum, Heavy Duty 95"	085681	7.2
CFS83	Continuous Geared Hinge, Full Surface, Clear Aluminum, Standard Duty, 83"	085682	7.4
CFS83CP	Continuous Geared Hinge, Full Surface, Center Pivot, Clear Aluminum, Standard Duty, 83"	085683	7.5
CFS83HD1	Continuous Geared Hinge, Full Surface, Clear Aluminum, Heavy Duty 83"	085685	7.4
CFS83CP-HD1	Continuous Geared Hinge, Full Surface, Center Pivot, Clear Aluminum, Heavy Duty 83"	085684	7.7
DFM83HD1	Continuous Geared Hinge, Full Mortise, Dark Bronze Aluminum, Heavy Duty 83"	085686	6.3
DFS83	Continuous Geared Hinge, Full Surface, Dark Bronze Aluminum, Standard Duty, 83"	085687	7.4
CHS83HD1	Continuous Hinge, Half Surface (Door Leaf Mounted to Door Face), Clear Anodized Aluminum, Heavy Duty 83"	086715	7
CFS83HD1-M	Modular Continuous Geared Hinge, Full Surface, Clear Aluminum, Heavy Duty, 2 segments = 82-13/16"	086734	7.5
CFS12HD1-M	Modular Continuous Geared Hinge, Full Surface, Clear Aluminum, Heavy Duty, 12"	086735	1.1
DFS83HD1-M	Modular Continuous Geared Hinge, Full Surface, Dark Bronze Aluminum, Heavy Duty, 2 segments = 82-13/16"	086736	7.5
DFS12HD1-M	Modular Continuous Geared Hinge, Full Surface, Dark Bronze Aluminum, Heavy Duty, 12"	086737	1.1

\*The 12" (FS12HD1-M) hinge segment is available to create a 95" hinge. Combining multiple 12" segments to manufacture a custom length hinge will void any applicable product warranties and certifications. The 12" segment must be installed between 40" and 43" hinge segments.

**ASSA ABLOY**  
Opening Solutions

Experience a safer  
and more open world

Fax 877-888-2772, email [flashship@assaabloy.com](mailto:flashship@assaabloy.com) or use  
Online Order Entry at [www.assaabloydss.com/extranet](http://www.assaabloydss.com/extranet) by clicking the FlashShip® icon

Note: FlashShip® reserves the right to limit quantities.

Copyright © 2017-2024, ASSA ABLOY Door Security Solutions, an ASSA ABLOY Group company. All rights reserved.  
Reproduction in whole or in part without the express written permission of ASSA ABLOY Door Security Solutions is prohibited.



S44D Adhesive Gasket



S773D Adhesive Gasket

Model #	Description	FlashShip® #	Approx. Wt. Each (Lbs)
<b>Adhesive Gasket</b>			
HSS2000-18	HSS Adhesive Intumescent Gasket, 3/64" x 7/16", 18' Roll	085688	0.2
HSS2000-21	HSS Adhesive Intumescent Gasket, 3/64" x 7/16", 21' Roll	085689	0.4
HSS2000-24	HSS Adhesive Intumescent Gasket, 3/64" x 7/16", 24' Roll	085690	0.4
HSS2000xS88D3684	Combination HSS Adhesive Intumescent Gasket and S88 Silicone Gasketing, Dark Brown, 36" x 84" Opening	085692	0.7
HSS2000xS88D4884	Combination HSS Adhesive Intumescent Gasket and S88 Silicone Gasketing, Dark Brown, 48" x 84" Opening	085693	0.8
HSS2000xS44D4884	Combination HSS Adhesive Intumescent Gasket and S44 Silicone Gasketing, Dark Brown, 48" x 84" Opening	085691	0.5
PK33BL17	PemkoPrene™ Adhesive Perimeter Gasket, 3/16" x 3/8", Black, 17' Roll	085700	0.2
PK33D17	PemkoPrene™ Adhesive Perimeter Gasket, 3/16" x 3/8", Dark Brown, 17' Roll	085702	0.2
PK33BL20	PemkoPrene™ Adhesive Perimeter Gasket, 3/16" x 3/8", Black, 20' Roll	085701	0.2
PK55D17	PemkoPrene™ Adhesive Gasket, 3/16" x 1/2", Dark, 17' Roll	085705	0.3
PK55D20	PemkoPrene™ Adhesive Gasket, 3/16" x 1/2", Dark, 20' Roll	085706	0.3
PK55BL17	PemkoPrene™ Adhesive Gasket, 3/16" x 1/2", Black, 17' Roll	085703	0.3
PK55BL20	PemkoPrene™ Adhesive Gasket, 3/16" x 1/2", Black, 20' Roll	085704	0.3
S44D17	Silicone Fin Smoke Gasket, 5/16" x 7/16", Dark 17' Roll with Self Adhesive	085713	0.5
S44D20	Silicone Fin Smoke Gasket, 5/16" x 7/16", Dark 20' Roll with Self Adhesive	085714	0.6
S44D21	Silicone Fin Smoke Gasket, 5/16" x 7/16", Dark 21' Roll with Self Adhesive	085715	0.6
S44D25	Silicone Fin Smoke Gasket, 5/16" x 7/16", Dark 25' Roll with Self Adhesive	085716	0.8

Fax 877-888-2772, email [flashship@assaabloy.com](mailto:flashship@assaabloy.com) or use  
Online Order Entry at [www.assaabloydss.com/extranet](http://www.assaabloydss.com/extranet) by clicking the FlashShip® icon

Note: FlashShip® reserves the right to limit quantities.

Copyright © 2017-2024, ASSA ABLOY Door Security Solutions, an ASSA ABLOY Group company. All rights reserved.  
Reproduction in whole or in part without the express written permission of ASSA ABLOY Door Security Solutions is prohibited.

**ASSA ABLOY**  
Opening Solutions

Experience a safer  
and more open world

PEMKO



S44D Adhesive Gasket



S773D Adhesive Gasket

Model #	Description	FlashShip® #	Approx. Wt. Each (Lbs)
<b>Adhesive Gasket (Cont.)</b>			
S44W17	Silicone Fin Smoke Gasket, 5/16" x 7/16", White 17' Roll with Self Adhesive	085717	0.5
S88BL17	Silicone Bulb Smoke Gasket, 1/4" x 1/2", Black, 17' Roll with Self Adhesive	085729	0.5
S88BL20	Silicone Bulb Smoke Gasket, 1/4" x 1/2", Black, 20' Roll with Self Adhesive	085730	0.6
S88BL21	Silicone Bulb Smoke Gasket, 1/4" x 1/2", Black, 21' Roll with Self Adhesive	086676	0.8
S88BL510	Silicone Bulb Smoke Gasket, 1/4" x 1/2", Black, 510' Roll with Self Adhesive	085731	13.6
S88D17	Silicone Bulb Smoke Gasket, 1/4" x 1/2", Dark, 17' Roll with Self Adhesive	085732	0.5
S88D18	Silicone Bulb Smoke Gasket, 1/4" x 1/2", Dark, 18' Roll with Self Adhesive	085733	0.6
S88D20	Silicone Bulb Smoke Gasket, 1/4" x 1/2", Dark, 20' Roll with Self Adhesive	085734	0.6
S88D21	Silicone Bulb Smoke Gasket, 1/4" x 1/2", Dark, 21' Roll with Self Adhesive	085736	0.7
S88D25	Silicone Bulb Smoke Gasket, 1/4" x 1/2", Dark, 25' Roll with Self Adhesive	085737	0.7
S88D204	Silicone Bulb Smoke Gasket, 1/4" x 1/2", Dark, 204' Roll with Self Adhesive	085735	0.6
S88D510	Silicone Bulb Smoke Gasket, 1/4" x 1/2", Dark, 510' Roll with Self Adhesive	085738	13.6
S88W17	Silicone Bulb Smoke Gasket, 1/4" x 1/2", White, 17' Roll with Self Adhesive	085739	0.5
S88W20	Silicone Bulb Smoke Gasket, 1/4" x 1/2", White 20' Roll with Self Adhesive	085740	0.6
S77BL17	Silicone Single Fin Fire/Smoke Gasket, 5/16" x 1/2", Black, 17' Roll with Self Adhesive	086696	0.5
S77BL18	Silicone Single Fin Fire/Smoke Gasket, 5/16" x 1/2", Black, 18' Roll with Self Adhesive	086697	0.6
S77BL21	Silicone Single Fin Fire/Smoke Gasket, 5/16" x 1/2", Black, 21' Roll with Self Adhesive	086698	0.7
S771D7	Silicone Astragal/Meeting Stile Gasket, 9/32" x 7/16", Dark, 7' Roll with Self Adhesive	085719	0.1
S771C7	Silicone Astragal/Meeting Stile Gasket, 9/32" x 7/16", Clear, 7' Roll with Self Adhesive	085718	0.1
S772D7	Silicone Astragal/Meeting Stile Gasket, 3/16" x 1/2", Dark, 7' Roll with Self Adhesive	085720	0.1
S772D8	Silicone Astragal/Meeting Stile Gasket, 3/16" x 1/2", Dark, 8' Roll with Self Adhesive	085721	0.1
S773D17	Silicone Triple Fin Acoustic/Smoke Gasket, 3/8" x 1/2", Dark 17' Roll with Self Adhesive	085724	0.4
S773D18	Silicone Triple Fin Acoustic/Smoke Gasket, 3/8" x 1/2", Dark 18' Roll with Self Adhesive	085725	0.4
S773D20	Silicone Triple Fin Acoustic/Smoke Gasket, 3/8" x 1/2", Dark 20' Roll with Self Adhesive	085726	0.5
S773D21	Silicone Triple Fin Acoustic/Smoke Gasket, 3/8" x 1/2", Dark 21' Roll with Self Adhesive	085727	0.5
S773BL17	Silicone Triple Fin Acoustic/Smoke Gasket, 3/8" x 1/2", Black 17' Roll with Self Adhesive	085722	0.4
S773BL20	Silicone Triple Fin Acoustic/Smoke Gasket, 3/8" x 1/2", Black 20' Roll with Self Adhesive	085723	0.5
S773W17	Silicone Triple Fin Acoustic/Smoke Gasket, 3/8" x 1/2", White 17' Roll with Self Adhesive	085728	0.4
<b>Perimeter Gasket</b>			
369AP84	Meeting Stile Mill Aluminum Pile Insert, 84"	085664	0.3
379CR84	Adjustable Jamb W/S Clear Anodized Aluminum Sponge EPDM Seal, 84"	085665	2.2
45041CNB3684	Door Sweep, 45-Degree Retainer with 13/32" Nylon Brush Clear Anodized , 3/0 x 7/0 Opening	085675	4.3
45041CNB3684xBL	Door Sweep, 45-Degree Retainer with 13/32" Black Nylon Brush Clear Anodized , 3/0 x 7/0 Opening	086683	4.3
2891AS36	1/4" x 1-1/2" x 36" Perimeter Gasket, Heavy duty, Mill Aluminum w/Silicone Insert	085619	1.2
2891AS3684	1/4" x 1-1/2" Perimeter Gasket, Heavy Duty, Mill Aluminum, Silicon Insert for 3/0 x 7/0 Opening	085620	7

**ASSA ABLOY**  
Opening Solutions

Experience a safer  
and more open world

Fax 877-888-2772, email [flashship@assaabloy.com](mailto:flashship@assaabloy.com) or use  
Online Order Entry at [www.assaabloydss.com/extranet](http://www.assaabloydss.com/extranet) by clicking the FlashShip® icon

Note: FlashShip® reserves the right to limit quantities.

Copyright © 2017-2024, ASSA ABLOY Door Security Solutions, an ASSA ABLOY Group company. All rights reserved.  
Reproduction in whole or in part without the express written permission of ASSA ABLOY Door Security Solutions is prohibited.



MAG349D Adhesive Gasketing

Model #	Description	FlashShip® #	Approx. Wt. Each (Lbs)
<b>Perimeter Gasket (Cont.)</b>			
2891APK3684	1/4" x 1-1/2" Perimeter Gasket, Heavy Duty, Mill Aluminum PemkoPrene™ Seal for 3/0 x 7/0 Opening	085618	7
29310CS84	Straight Snap-Cover Meeting Stile, Clear Anodized Aluminum, Silicone Seal, 1 piece @84"	085623	1.5
290APK84	1/4" x 1-1/2" x 84", Jamb Weatherstrip, Mill Aluminum w/PemkoPrene™ seal	085621	1.5
29324CNB36	Snap Cover Weatherstrip, Clear Anodized Aluminum, 1/4" x 7/8", with 3/8" Gray Nylon Brush, 36"	085624	0.7
29324CNB84	Snap Cover Meeting Stile, Clear Anodized Aluminum, 1/4" x 7/8", with 3/8" Gray Nylon Brush, 1 piece @84"	085625	1.5
29326CNB36	Snap Cover Weatherstrip, Clear Anodized Aluminum, 1/4" x 7/8", with 5/8" Gray Nylon Brush, 36"	085626	0.8
29326DNB36	Snap Cover Weatherstrip, Dark Bronze Anodized Aluminum, 1/4" x 7/8", with 5/8" Black Nylon Brush, 36"	085627	0.8
297AS3684	Jamb Weatherstrip Mill Aluminum w/Silicone Insert 1/4" x 13/16" for 3/0 x 7/0 Opening	085628	1.2
MAG349D-85	Magnetic Kerf-In Weatherstrip, Dark, Foam with Magnetic Insert, 85" Long	085694	0.6
Q102D-97	5/8" Reach, Encased Foam Kerf-In Weatherstrip, Dark, 97" Long	085709	0.3
Q103D-97	3/8" Reach, Encased Foam Kerf-In Weatherstrip, Dark, 97" Long	085710	0.2
Q106D-97	5/8" Reach, Encased Foam Kerf-In Weatherstrip, Dark, 97" Long	085711	0.3

Fax 877-888-2772, email [flashship@assaabloy.com](mailto:flashship@assaabloy.com) or use  
Online Order Entry at [www.assaabloydss.com/extranet](http://www.assaabloydss.com/extranet) by clicking the FlashShip® icon

Note: FlashShip® reserves the right to limit quantities.

Copyright © 2017-2024, ASSA ABLOY Door Security Solutions, an ASSA ABLOY Group company. All rights reserved.  
Reproduction in whole or in part without the express written permission of ASSA ABLOY Door Security Solutions is prohibited.

**ASSA ABLOY**  
Opening Solutions

Experience a safer  
and more open world





**ASSA ABLOY**  
Opening Solutions

Experience a safer  
and more open world

Fax 877-888-2772, email [flashship@assaabloy.com](mailto:flashship@assaabloy.com) or use  
Online Order Entry at [www.assaabloydss.com/extranet](http://www.assaabloydss.com/extranet) by clicking the FlashShip® icon

*Note: FlashShip® reserves the right to limit quantities.*

Copyright © 2017-2024, ASSA ABLOY Door Security Solutions, an ASSA ABLOY Group company. All rights reserved.  
Reproduction in whole or in part without the express written permission of ASSA ABLOY Door Security Solutions is prohibited.





94C Flush Pull



106 x 70C Pull Plate



70C-RKW Push Plate

Model #	Description	Finish	FlashShip® #	Approx. Wt. Each (Lbs)
<b>Push Plates</b>				
70B	3-1/2" x 15"	US10B	085885	1
70B	3-1/2" x 15"	US28	085886	1
70B	3-1/2" x 15"	US32D	085887	1
70C	4" x 16"	US3	085891	1
70C	4" x 16"	US10B	085888	1
70C	4" x 16"	US26D	085889	1
70C	4" x 16"	US28	085890	1
70C	4" x 16"	US32D	085892	1
70E	6" x 16"	US32D	085893	2
70F	8" x 16"	US32D	085894	2
<b>Flush Pulls</b>				
94	3-1/2" x 5"	US32D	085906	0.6
94BTB	Set BTB	US32D	085907	0.1
94C	3-1/2" x 5"	US32D	085908	0.6
95A	2-3/16" x 3-1/4"	US26D	085909	0.6
95B	2-11/16" x 4-3/16"	US26D	085911	0.8
<b>Pull Plates</b>				
102 x 70B	5/8" D x 5-1/2" CTC	US32D	085743	2
102 x 70C	5/8" D x 5-1/2" CTC	US32D	085744	2
105 x 70B	3/4" D x 5-1/2" CTC	US32D	085745	2
105 x 70C	3/4" D x 5-1/2" CTC	US32D	085746	2
106 x 70B	3/4" D x 6" CTC	US32D	085748	2
106 x 70C	3/4" D x 6" CTC	US10B	085749	2
106 x 70C	3/4" D x 6" CTC	US32D	085750	2
107 x 70B	3/4" D x 8" CTC	US32D	085752	2
107 x 70C	3/4" D x 8" CTC	US10B	085753	2
107 x 70C	3/4" D x 8" CTC	US32D	085754	2
110 x 70C	1" D x 8" CTC	US32D	085763	3.5
111 x 70C	1" D x 10" CTC	US32D	085765	4
122 x 70C	3/8" x 1-1/4" x 6" CTC	US10B	085766	2
122 x 70C	3/8" x 1-1/4" x 6" CTC	US32D	085767	2
125 x 70C	1" HR x 6" CTC	US32D	085768	2
126 x 70C	1" HR x 8" CTC	US32D	085769	2

Fax 877-888-2772, email [flashship@assaabloy.com](mailto:flashship@assaabloy.com) or use  
 Online Order Entry at [www.assaabloydss.com/extranet](http://www.assaabloydss.com/extranet) by clicking the FlashShip® icon  
 Note: FlashShip® reserves the right to limit quantities.

Copyright © 2017-2024, ASSA ABLOY Door Security Solutions, an ASSA ABLOY Group company. All rights reserved.  
 Reproduction in whole or in part without the express written permission of ASSA ABLOY Door Security Solutions is prohibited.

**ASSA ABLOY**  
 Opening Solutions

Experience a safer  
 and more open world

**ROCKWOOD®**



AP1007 Notched Arm Pull with Plate



Offset Push Pull Set



320-RKW Latch Protector



RM4800 AccenTek Door Pull

Model #	Description	Finish	FlashShip® #	Approx. Wt. Each (Lbs)
<b>Pull Plates (Cont.)</b>				
132 x 70B	Cast x 5-1/2" CTC	US32D	085771	2
132 x 70C	Cast x 5-1/2" CTC	US32D	085772	2
<b>Straight Door Pulls</b>				
106	3/4" x 6" CTC	US32D	085747	1.3
107	3/4" x 8" CTC	US32D	085751	1.6
110	1" x 8" CTC	US32D	085762	3
111	1" x 10" CTC	US32D	085764	3.5
<b>Offset Door Pulls</b>				
BF157	1" x 10" CTC	US28	085912	4.3
BF157	1" x 10" CTC	US32D	085915	4.3
BF157	1" x 10" CTC	314	085913	4.3
BF157BTB16	1" x 10"	US28	085919	8.6
BF158	1" x 12" CTC	US32D	085922	4.8
<b>Offset Push Pull Sets</b>				
BF15747CT3	10" Offset Push Pull Set	US28	085916	4.8
BF15747CT3	10" Offset Push Pull Set	US32D	085918	4.8
BF15747CT3	10" Offset Push Pull Set	315	085917	4.8
<b>Architectural Pulls</b>				
RM4820xRM4810BTB175.BSP	16" CTC 1.75" Door Thickness	BSP	086482	3.8
RM4820xRM4810BTB175.IS	16" CTC 1.75" Door Thickness	IS	086483	3.8
<b>Hands-Free Pulls</b>				
AP1007	Notched Arm Pull with Plate	US32DMS	086608	4.5
AP1140	1.5" Wide Arm Pull	US32DMS	086609	.6
AP1141	0.75" Slope Arm Pull	US32DMS	086610	.5
FP1230	Foot Pull with Grip	US32D	086611	1
<b>Latch Protectors</b>				
320-RKW	Cylindrical or Mortise	US32D	085783	1.2
320CL	Cylindrical	US32D	085784	1.2
321	Mortise	US32D	085785	1.2

**ASSA ABLOY**  
Opening Solutions

Experience a safer  
and more open world

Fax 877-888-2772, email [flashship@assaabloy.com](mailto:flashship@assaabloy.com) or use  
Online Order Entry at [www.assaabloydss.com/extranet](http://www.assaabloydss.com/extranet) by clicking the FlashShip® icon

Note: FlashShip® reserves the right to limit quantities.

Copyright © 2017-2024, ASSA ABLOY Door Security Solutions, an ASSA ABLOY Group company. All rights reserved.  
Reproduction in whole or in part without the express written permission of ASSA ABLOY Door Security Solutions is prohibited.



409 Concave Door Stop



430 Convex Door Stop



441H Dome Stop



446 Door Stop

**ROCKWOOD®**

Model #	Description	Finish	FlashShip® #	Approx. Wt. Each (Lbs)
<b>Door Stops</b>				
400	Wall; Cast Convex	US26D	085787	0.3
403	Wall; Cast Concave	US10B	085788	0.3
403	Wall; Cast Concave	US26D	085789	0.3
406	Wall; Wrought Convex	US10BE	085790	0.2
406	Wall; Wrought Convex	US26D	085791	0.2
406	Wall; Wrought Convex	US32D	085792	0.2
406	Wall; Wrought Convex	BSP	086677	0.2
409	Wall; Wrought Convex	BSP	086678	0.2
409	Wall; Wrought Concave	US3	085797	0.2
409	Wall; Wrought Concave	US10	085793	0.2
409	Wall; Wrought Concave	US10BE	085794	0.2
409	Wall; Wrought Concave	US26	085795	0.2
409	Wall; Wrought Concave	US26D	085796	0.2
409	Wall; Wrought Concave	US32D	085798	0.2
415	Wall; Cast; Convex	US26D	085799	0.3
430	Wall; Convex	US26D	085800	0.1
440	Low Dome Stop	US10B	085801	0.2
440	Low Dome Stop	US26D	085802	0.2
441	Low Dome Stop	US10B	085803	0.2
441	Low Dome Stop	US26D	085804	0.2
441CU	Dome Stop Combination Unit	US26D	085805	0.3
441H	Cast Universal Dome Stop	US26D	085806	0.2
442	High Dome Stop	US10B	085807	0.2
442	High Dome Stop	US26D	085808	0.2
443	High Dome Stop	US26D	085809	0.2
445	Heavy Duty Door Stop	US26D	085810	0.3
446	Round Stop	US10B	085811	0.4
446	Round Stop	US26	085812	0.4
446	Round Stop	US26D	085813	0.4
455	Curved Roller Stop	US26D	085814	0.5
456	Straight Roller Stop	US26D	085815	0.5
456L	Straight Roller Stop	US26D	085816	0.5
459	Spring Loaded Plunger	US26D	085817	1.3
460	Kick Down Stop	ALM	085818	0.1
461	Kick Down Stop	US10B	085819	0.1
461	Kick Down Stop	US26D	085820	0.1
461L	Kick Down Stop	US10B	085821	0.1
461L	Kick Down Stop	US26D	085822	0.1

Fax 877-888-2772, email [flashship@assaabloy.com](mailto:flashship@assaabloy.com) or use Online Order Entry at [www.assaabloydss.com/extranet](http://www.assaabloydss.com/extranet) by clicking the FlashShip® icon

Note: FlashShip® reserves the right to limit quantities.

Copyright © 2017-2024, ASSA ABLOY Door Security Solutions, an ASSA ABLOY Group company. All rights reserved. Reproduction in whole or in part without the express written permission of ASSA ABLOY Door Security Solutions is prohibited.

**ASSA ABLOY**  
Opening Solutions

Experience a safer  
and more open world

**ROCKWOOD®**



470 Door Stop



476 Door Stop

Model #	Description	Finish	FlashShip® #	Approx. Wt. Each (Lbs)
<b>Door Stops (Cont.)</b>				
462	Heavy Duty Stop	US2C	085823	0.6
463	Heavy Duty Stop	US32D	085824	0.6
465	Heavy Duty Stop	US26D	085826	0.6
466	Heavy Duty Stop	N/A	085827	0.6
467	Heavy Duty Stop	N/A	085828	0.6
470	Door Stop	US26D	085829	0.7
471	Door Stop	US26D	085830	0.7
472	Floor Stop w/Keeper	US26D	085831	0.9
473	Floor Stop w/Keeper	US26D	085832	0.9
474	Door Stop	US26D	085833	0.7
476	Door Stop w/Keeper	US26D	085834	0.7
481	Door Stop	US26D	085836	0.6
481H	Door Stop	US26D	085837	0.6
482	Door Stop	US26D	085838	0.6
483	Door Stop	US26D	085839	0.6
485	Door Stop w/Keeper	US26D	085840	0.6
486	Angle Stop	US2C	085841	0.4
487	Heavy Duty Stop	US26D	085842	0.8
491	Automatic Holder with Stop	US26D	085843	0.8
494	Automatic Holder with Stop	US26D	085844	0.8
518	Cast Brass with DuraFlex Bumper	US26D	085847	0.2
519	Cast Brass with DuraFlex Bumper	US26D	085848	0.2
526	Spring Base Stop	NP	085850	0.2
528	Heavy Duty Hinge Pin Stop	NP	085851	0.2

**ASSA ABLOY**  
Opening Solutions

Experience a safer  
and more open world

Fax 877-888-2772, email [flashship@assaabloy.com](mailto:flashship@assaabloy.com) or use  
Online Order Entry at [www.assaabloydss.com/extranet](http://www.assaabloydss.com/extranet) by clicking the FlashShip® icon

*Note: FlashShip® reserves the right to limit quantities.*

Copyright © 2017-2024, ASSA ABLOY Door Security Solutions, an ASSA ABLOY Group company. All rights reserved.  
Reproduction in whole or in part without the express written permission of ASSA ABLOY Door Security Solutions is prohibited.



555 Flush Bolt



570 Dust Strike



580 Surface Bolt

Model #	Description	Finish	FlashShip® #	Approx. Wt. Each (Lbs)
<b>Lever Extension Flush Bolts</b>				
550	Flush Bolt (Sold in Packs of 2)	US26D	085852	0.8
555	Flush Bolt (Sold in Packs of 2)	US10B	085853	0.8
555	Flush Bolt (Sold in Packs of 2)	US26	085854	0.8
555	Flush Bolt (Sold in Packs of 2)	US26D	085855	0.8
555	Flush Bolt Extension Rod, 24"	—	086081	1
557	Flush Bolt (Sold in Packs of 2)	US26D	085856	0.8
<b>Dust Proof Strike</b>				
570	Strike	US10B	085857	0.4
570	Strike	US26D	085858	0.4
<b>Surface Bolts</b>				
580-8	8" Bolt Length	US26D	085859	1.1
630-4	4" Bolt Length	US26D	085883	0.8
<b>Roller Latches</b>				
590	w/ Cast Strike	US26D	085860	0.6
591	w/ ASA Strike	US26D	085861	0.6
592	w/ #161 Strike	US26D	085862	0.6
593	w/ Angle Stop	US26D	085863	0.6
594	w/ #161 Strike	US26D	085864	0.6

Fax 877-888-2772, email [flashship@assaabloy.com](mailto:flashship@assaabloy.com) or use  
 Online Order Entry at [www.assaabloydss.com/extranet](http://www.assaabloydss.com/extranet) by clicking the FlashShip® icon

Note: FlashShip® reserves the right to limit quantities.

Copyright © 2017-2024, ASSA ABLOY Door Security Solutions, an ASSA ABLOY Group company. All rights reserved.  
 Reproduction in whole or in part without the express written permission of ASSA ABLOY Door Security Solutions is prohibited.

**ASSA ABLOY**  
 Opening Solutions

Experience a safer  
 and more open world

# ROCKWOOD®



603 Door Guard



614V Door Knocker/Viewer



622 Door Viewer



802 Coat Hook

Model #	Description	Finish	FlashShip® #	Approx. Wt. Each (Lbs)
<b>Door Guards</b>				
603	Cast Aluminum	DCRM	085867	0.4
604	Solid Cast Brass	US26D	085870	0.4
605	Brass Protection Plate	US26D	085871	0.3
606	Clear Rubber Wall Guard (Sold in Packs of 55)	N/A	085872	0.3
<b>Door Silencers</b>				
608	Gray Rubber (Sold in Packs of 100)	N/A	085873	0.01
608CA	Clear Rubber (Sold in Packs of 300)	N/A	085874	0.01
609	Gray Rubber (Sold in Packs of 100)	N/A	085875	0.01
<b>Door Knockers/Viewers</b>				
614V	Knocker/w 190° Viewer	US26D	085876	0.4
620	160° Viewer	CRM	085877	0.1
622	190° Viewer	ANT	085878	0.1
622	190° Viewer	BRS	085879	0.1
622	190° Viewer	CRM	085880	0.1
622	190° Viewer	DCRM	085881	0.1
622	190° Viewer	STNN	085882	0.1
627	Heavy Duty Privacy Viewer	CRM	086521	0.1
627	Heavy Duty Privacy Viewer	BLK	086522	0.1
<b>Coat Hooks</b>				
796	Small Double Hook	US26D	085895	0.3
802	Medium Hook	US26D	085896	0.4
806	Medium Hook	US26D	085897	0.4
<b>Misc. Gate Latch /Pulls/Catches</b>				
602	Secret Gate Latch	US26D	085865	1
853	Solid Wire Pull	US26D	085899	0.5
860	Flush Cup Pull	US32D	085900	0.9
872	Cast Flush Pull	US26D	085901	0.9
900	HD Magnetic Catch	ALM	085904	.25
901	XHD Magnetic Catch	ALM	085905	.35
<b>Coordinators</b>				
2601AB	Mounting Bracket	Black Prime Coat	085776	1
2601C	Mounting Bracket	Black Prime Coat	085777	1
2660	Coordinator	Black Prime Coat	085741	7
2672	Coordinator	Black Prime Coat	085778	8
2696	Coordinator	Black Prime Coat	085742	9.75
1700	Universal	Black Prime Coat	085775	2.65
<b>Automatic Flush Bolts</b>				
2842	Automatic	US26D	085779	2.4
2845	Self Latching	US26D	085780	2.4
2942	Automatic	US26D	085781	2.9
2945	Self Latching	US26D	085782	2.9

## ASSA ABLOY

Opening Solutions

Experience a safer  
and more open world

Fax 877-888-2772, email [flashship@assaabloy.com](mailto:flashship@assaabloy.com) or use  
Online Order Entry at [www.assaabloydss.com/extranet](http://www.assaabloydss.com/extranet) by clicking the FlashShip® icon

Note: FlashShip® reserves the right to limit quantities.

Copyright © 2017-2024, ASSA ABLOY Door Security Solutions, an ASSA ABLOY Group company. All rights reserved.  
Reproduction in whole or in part without the express written permission of ASSA ABLOY Door Security Solutions is prohibited.





Model #	Description	Finish	FlashShip® #	Approx. Wt. Each (Lbs)
<b>Filler Plates</b>				
DFF4	Frame Hinge	Prime Coat	085924	0.02
LF161	Door Edge	Prime Coat	085927	0.02
DF86	Door Edge	Prime Coat	085923	0.02
SFASA	Strike	Prime Coat	085929	0.02
DHF4B	Filler Plate	Prime Coat	086360	0.02
SFB160	Filler Plate	Prime Coat	086361	0.02
LA86	Filler Plate	Prime Coat	086362	0.02
HS42	Hinge Shim -.028" Thick	—	085925	0.1
HS44	Hinge Shim -.065" Thick	—	085926	0.1
<b>Trim Protection Bars</b>				
R111LPB	Lever Handle	US32D	085928	2.6
<b>Protection Plates</b>				
K1050	4 x 35BE	US32D	085845	2
K1050	6 x 34BE	US32D	085884	3
K1050	8 x 34BE	US10B	085930	4
K1050	8 x 34BE	US32D	085902	4
K1050	8 x 34BE	BSP	086661	4
K1050	8 x 35BE	US32D	085903	4.5
K1050	10 x 34BE	US10B	085932	5.5
K1050	10 x 34BE	US28	085931	3
K1050	10 x 34BE	US32D	085755	5
K1050	10 x 34BE	BSP	086660	5
K1050	10 x 34-1/2BE	US32D	085758	5
K1050	10 x 35BE	US32D	085759	5.5
K1050	10 x 40BE	US32D	085760	6
K1050	10 x 46BE	US32D	085761	5
K1050	12 x 34BE	US32D	085770	6
K1050	16 x 34BE	US32D	085774	8
K1050	34 x 34 BE	US32D	085786	17
K1050	34 x 34 BE	BSP	086662	17
Model #	Cutout Size	Finish	FlashShip® #	Approx. Case Wt. (Lbs)
<b>Lite Kits (sold in case quantities; 3 lite kits per case)</b>				
LT-B1	5" x 35"	Gray Primer	086725	15
LT-B1	6" x 27"	Gray Primer	086723	12
LT-B1	7" x 22"	Gray Primer	086721	12
LT-B1	8" x 32"	Gray Primer	086726	15
LT-B1	10" x 10"	Gray Primer	086727	8
LT-B1	12" x 12"	Gray Primer	086722	12
LT-B1	24" x 24"	Gray Primer	086728	18
LT-B1	24" x 30"	Gray Primer	086724	21
LT-B1	24" x 32"	Gray Primer	086729	22
LT-B1	24" x 34"	Gray Primer	086730	22
LT-B1	24" x 36"	Gray Primer	086731	22

Cutout sizes listed on lite kit.

Fax 877-888-2772, email [flashship@assaabloy.com](mailto:flashship@assaabloy.com) or use Online Order Entry at [www.assaabloydss.com/extranet](http://www.assaabloydss.com/extranet) by clicking the FlashShip® icon

Note: FlashShip® reserves the right to limit quantities.

Copyright © 2017-2024, ASSA ABLOY Door Security Solutions, an ASSA ABLOY Group company. All rights reserved. Reproduction in whole or in part without the express written permission of ASSA ABLOY Door Security Solutions is prohibited.

**ASSA ABLOY**  
Opening Solutions

Experience a safer  
and more open world

**ROCKWOOD®**



*BFM Series ADA Molded Plastic Signs*



*Lite Kits*

Model #	Description	Finish	FlashShip® #	Approx. Wt. Each (Lbs)
<b>Lite Kits (sold in case quantities; 3 lite kits per case) (Cont.)</b>				
LT-B1	5" x 35"	Dark Bronze	086510	15
LT-B1	6" x 27"	Dark Bronze	086518	12
LT-B1	7" x 22"	Dark Bronze	086517	12
LT-B1	8" x 32"	Dark Bronze	086511	15
LT-B1	10" x 10"	Dark Bronze	086512	8
LT-B1	12" x 12"	Dark Bronze	086519	12
LT-B1	24" x 24"	Dark Bronze	086513	18
LT-B1	24" x 32"	Dark Bronze	086514	22
LT-B1	24" x 34"	Dark Bronze	086515	22
LT-B1	24" x 36"	Dark Bronze	086516	22
LT-B1	24" x 30"	Dark Bronze	086520	21

*Cutout sizes listed on lite kit.*

Model #	Description	Finish	FlashShip® #	Approx. Wt. Each (Lbs)
<b>BFM Series ADA Molded Plastic Signs</b>				
BFM687.BLACK	BFM Series ADA Molded Plastic Signs	Black	086497	1
BFM688.BLACK	BFM Series ADA Molded Plastic Signs	Black	086498	1
BFM689.BLACK	BFM Series ADA Molded Plastic Signs	Black	086499	1
BFM687.BLUE	BFM Series ADA Molded Plastic Signs	Blue	086603	1
BFM688.BLUE	BFM Series ADA Molded Plastic Signs	Blue	086604	1
BFM689.BLUE	BFM Series ADA Molded Plastic Signs	Blue	086605	1

**ASSA ABLOY**  
Opening Solutions

Experience a safer  
and more open world

Fax 877-888-2772, email [flashship@assaabloy.com](mailto:flashship@assaabloy.com) or use  
Online Order Entry at [www.assaabloydss.com/extranet](http://www.assaabloydss.com/extranet) by clicking the FlashShip® icon

*Note: FlashShip® reserves the right to limit quantities.*

Copyright © 2017-2024, ASSA ABLOY Door Security Solutions, an ASSA ABLOY Group company. All rights reserved.  
Reproduction in whole or in part without the express written permission of ASSA ABLOY Door Security Solutions is prohibited.



Fax 877-888-2772, email [flashship@assaabloy.com](mailto:flashship@assaabloy.com) or use  
Online Order Entry at [www.assaabloydss.com/extranet](http://www.assaabloydss.com/extranet) by clicking the FlashShip® icon  
*Note: FlashShip® reserves the right to limit quantities.*

Copyright © 2017-2024, ASSA ABLOY Door Security Solutions, an ASSA ABLOY Group company. All rights reserved.  
Reproduction in whole or in part without the express written permission of ASSA ABLOY Door Security Solutions is prohibited.

**ASSA ABLOY**  
Opening Solutions

Experience a safer  
and more open world



8501



7500



6300



1601



5800

Model #	Description	Finish	FlashShip® #	Approx. Wt. Each (Lbs)
<b>Door Closers, Non-Hold Open</b>				
8501	Tri-pack, Multi-Size 1-6	689	086267	8
8501	Tri-pack, Multi-Size 1-6	690	086268	8
CLP8501	Heavy Duty Arm, Multi-Size 1-6	689	086354	10.9
7500	Tri-Pack, Multi-Size 1-6	689	086307	9.9
7500	Tri-Pack, Multi-Size 1-6	690	086308	9.9
CLP7500	Heavy-Duty Arm, Multi-Size 1-6	689	086351	12.2
CPS7500	Heavy-Duty Arm with Spring, Multi-Size 1-6	689	086350	12.2
1601	Tri-Pack, Multi-Size 1-6	689	086269	7.2
1601	Tri-Pack, Multi-Size 1-6	690	086270	7.2
<b>Door Closers, Hold Open</b>				
8501H	Tri-Pack, Multi-Size 1-6	689	086353	9.3
7500H	Tri-Pack, Multi-Size 1-6	689	086352	11
<b>Door Operators</b>				
5845 x SQPB	Operator, Push Buttons, Mounting Hardware & Covers	693T	086271	20
6341 x 689	Operator, Push and Pull Arms, Mounting Hardware & Cover	689	086484	51
6342K2 x 689	Operator Kit with Wave to Open Switches	689	086614	33
6241 x 689	Low Energy Door Operator	689	087286	31
5241 x 689	Low Energy Door Operator	689	087287	21
ADA1028W	Wireless Interface Module	N/A	086359	25
565	RF Activation Kit - Includes (2) Door Switches, (2) Transmitters and (1) Receiver, for use with operators.	N/A	086523	4.5
<b>Accessories</b>				
TBGN134-47	Through-Bolts and Grommet Nuts 1-3/4" Door	689	085112	28
TBGN134-47	Through-Bolts and Grommet Nuts 1-3/4" Door	690	085113	28
TBGN134-38	Through-Bolts and Grommet Nuts 1-3/4" Door	689	085226	30
TBGN134-38	Through-Bolts and Grommet Nuts 1-3/4" Door	690	085356	30

**ASSA ABLOY**  
Opening Solutions

Experience a safer  
and more open world

Fax 877-888-2772, email [flashship@assaabloy.com](mailto:flashship@assaabloy.com) or use  
Online Order Entry at [www.assaabloydss.com/extranet](http://www.assaabloydss.com/extranet) by clicking the FlashShip® icon

Note: FlashShip® reserves the right to limit quantities.

Copyright © 2017-2024, ASSA ABLOY Door Security Solutions, an ASSA ABLOY Group company. All rights reserved.  
Reproduction in whole or in part without the express written permission of ASSA ABLOY Door Security Solutions is prohibited.



147 Offset Pivot



195 Offset Pivot



370 Center Hung Pivot



EM19 Power Transfer Intermediate Pivot

Model #	Description	Hand	Finish	FlashShip® #	Approx. Wt. Each (Lbs)
<b>3/4" Offset Pivot Sets (Includes Top Pivot)</b>					
117	Regular (250#) Interior	RH	626	085422	3
117	Regular (250#) Interior	LH	626	085423	3
147	Regular (500#) Interior/Exterior	RH	613	085428	2
147	Regular (500#) Interior/Exterior	LH	613	085429	2
147	Regular (500#) Interior/Exterior	RH	626	085426	2
147	Regular (500#) Interior/Exterior	LH	626	085427	2
L147	Heavy Weight (700#) Lead 1-3/4" Door	RH	626	085430	5
L147	Heavy Weight (700#) Lead 1-3/4" Door	LH	626	085431	5
195	Regular (400#) Frame Attached	RH	613	085436	3
195	Regular (400#) Frame Attached	LH	613	085437	3
195	Regular (400#) Frame Attached	RH	626	085434	3
195	Regular (400#) Frame Attached	LH	626	085435	3
<b>Center Hung Pivot Sets (Includes Top Pivot)</b>					
128-3/4	250#	—	613	085441	2
128-3/4	250#	—	626	085440	2
127-3/4	250# Frame Attached	—	613	085439	2
127-3/4	250# Frame Attached	—	626	085438	2
370	400#	—	613	085443	3
370	400#	—	626	085442	3
<b>Intermediate Pivots</b>					
M19	Regular	RH	613	085446	2
M19	Regular	LH	613	085447	2
M19	Regular	RH	626	085444	2
M19	Regular	LH	626	085445	2
EM19	Low Voltage Transfer Pivot, ElectroLynx® 8-Wire	RH	626	085448	2
EM19	Low Voltage Transfer Pivot, ElectroLynx® 8-Wire	LH	626	085449	2

Fax 877-888-2772, email flashship@assaabloy.com or use Online Order Entry at www.assaabloydss.com/extranet by clicking the FlashShip® icon

Note: FlashShip® reserves the right to limit quantities.

Copyright © 2017-2024, ASSA ABLOY Door Security Solutions, an ASSA ABLOY Group company. All rights reserved. Reproduction in whole or in part without the express written permission of ASSA ABLOY Door Security Solutions is prohibited.

**ASSA ABLOY**  
Opening Solutions

Experience a safer  
and more open world



Checkmate® Stops & Holders



994 Electromagnetic Holder/Release

Model #	Description	Finish	FlashShip® #	Approx. Wt. Each (Lbs)
<b>Checkmate® Stops and Holders</b>				
<b>Concealed</b>				
1-326	Heavy Duty Holder, Size 3	630	085455	5
1-336	Heavy Duty Stop, Size 3	630	085454	5
6-336	Low Profile Stop, Size 3	630	085462	5
2-346	Standard Duty Adjustable Combo, Size 3	613	085465	2
2-346	Standard Duty Adjustable Combo, Size 3	630	085464	2
<b>Surface</b>				
9-326	Heavy Duty Holder, Size 3	630	085459	4
9-336	Heavy Duty Stop, Size 3	630	085458	4
10-346	Standard Duty Adjustable Combo, Size 3	630	085466	2
<b>Electromagnetic Door Holder/Releases</b>				
<b>Triple Voltage Door Holders (12VDC, 24VAC/DC and 120VAC)</b>				
996M	Surface Wired	689	085472	2
996M	Surface Wired	690	085473	2
994M	Adjustable Short Armature Concealed Wiring	689	085470	2
980M	Floor Mounted	689	085468	3
997M	Wall Mounted	689	086077	2
997M	Wall Mounted	690	086078	2
998M	Wall Mounted	689	086079	3
998M	Wall Mounted	690	086080	3
<b>Armature Extensions</b>				
900	Base Unit	689	085474	0.1
900	Base Unit	690	085475	0.1
900-50	1/2" Armature Extension Filler*	689	085476	0.1
900-75	3/4" Armature Extension Filler*	689	085478	0.1
900-100	1" Armature Extension Filler*	689	085480	0.1

\*Extension spacers must be used with 900 base unit armature extension

**ASSA ABLOY**  
Opening Solutions

Experience a safer  
and more open world

Fax 877-888-2772, email [flashship@assaabloy.com](mailto:flashship@assaabloy.com) or use  
Online Order Entry at [www.assaabloydss.com/extranet](http://www.assaabloydss.com/extranet) by clicking the FlashShip® icon

Note: FlashShip® reserves the right to limit quantities.

Copyright © 2017-2024, ASSA ABLOY Door Security Solutions, an ASSA ABLOY Group company. All rights reserved.  
Reproduction in whole or in part without the express written permission of ASSA ABLOY Door Security Solutions is prohibited.



# Order Form

Fax To: 866.680.1024 • E-mail To: flashship@assaabloy.com  
Attention: Customer Service

---

Account # \_\_\_\_\_ P.O. # \_\_\_\_\_ P.O. Date \_\_\_\_\_  
Company Name \_\_\_\_\_  
Contact Name \_\_\_\_\_  
Contact Phone \_\_\_\_\_ Contact Fax \_\_\_\_\_ Contact E-mail \_\_\_\_\_

---

Ship To \_\_\_\_\_  
Address \_\_\_\_\_  
City \_\_\_\_\_ State \_\_\_\_\_ Zip \_\_\_\_\_  
Attention \_\_\_\_\_

---

Ship Via:     Standard: Ground  
                   Next Day: Freight Pre-Paid and Added to Customer Invoice  
                   2nd Day: Freight Pre-Paid and Added to Customer Invoice

---

**Instructions:**

1. Orders should be submitted on this form to qualify for FlashShip®.
2. Factory lead times apply if ANY items on the order are NOT listed in the current published *FlashShip* offering.
3. Orders can not be changed or cancelled.

Qty.	FlashShip #	Description	Comments	Price

**ASSA ABLOY**  
Opening Solutions  
  
Experience a safer  
and more open world

# Order Form

Fax To: 866.680.1024 • E-mail To: [flashship@assaabloy.com](mailto:flashship@assaabloy.com)

Attention: Customer Service

Page \_\_\_\_\_ of \_\_\_\_\_

Account #: \_\_\_\_\_ P.O. #: \_\_\_\_\_

Company Name: \_\_\_\_\_

**Instructions:**

- 1. Orders should be submitted on this form to qualify for FlashShip®.
- 2. Factory lead times apply if ANY items on the order are NOT listed in the current published *FlashShip* offering.
- 3. Orders cannot be changed or cancelled.

Qty.	FlashShip #	Description	Comments	Price

**ASSA ABLOY**  
Opening Solutions

Experience a safer  
and more open world

**ASSA ABLOY**  
Opening Solutions

Experience a safer  
and more open world

The ASSA ABLOY Group is the global leader in access solutions. Every day, we help billions of people experience a more open world.

**ASSA ABLOY**  
Opening Solutions

ASSA ABLOY Opening Solutions leads the development within door openings and products for access solutions in homes, businesses and institutions. Our offering includes doors, frames, door and window hardware, mechanical and smart locks, access control and service.

## Industry-Leading Brands

*To bring you the best and most complete security and life-safety solutions, ASSA ABLOY provides the products of brands known for quality, service and innovation. This group of hardware manufacturers works together to create openings that are strong, durable and meet today's needs for advanced safety and security solutions.*

ASSA ABLOY Architectural Door Accessories | [www.assaabloydooraccessories.us](http://www.assaabloydooraccessories.us)  
McKinney hinges, Markar and Pemko continuous hinges, Pemko thresholds, gasketing, sliding door hardware, lites and louvers, and Rockwood Architectural door pulls, stops and holders, bolts and latches, speciality door trim

NORTON RIXSON | [www.nortonrixson.com](http://www.nortonrixson.com)  
Low energy door operators, mechanical and electromechanical door closers, concealed closers, pivots and mechanical/electromechanical door holders

ASSA ABLOY ACCENTRA™ | [www.accentra-assaabloy.com](http://www.accentra-assaabloy.com)  
Mortise, cylindrical & auxiliary locks, exit devices, door closers, electromechanical products, and key systems

ASSA ABLOY Door Security Solutions  
110 Sargent Drive  
New Haven, CT 06511  
800.DSS.EZ4U (377.3948) | 203.624.5225  
[www.assaabloydss.com](http://www.assaabloydss.com)

**We are where you are.  
Connect with us online:**

 [www.facebook.com/assaabloydss](https://www.facebook.com/assaabloydss)

 [www.twitter.com/assaabloydssus](https://www.twitter.com/assaabloydssus)

Copyright © 2017-2024, ASSA ABLOY Door Security Solutions, an ASSA ABLOY Group company. All rights reserved. Reproduction in whole or in part without the express written permission of ASSA ABLOY Door Security Solutions is prohibited.

2500-2959 09/24