

**Corbin
Russwin** 
ASSA ABLOY

Quick Ship



Experience a safer
and more open world

TABLE OF CONTENTS

Terms and Conditions	3
Auxiliary Locks	
DL2200 Series Cylindrical Deadlock	4
DL3200 Series Cylindrical Deadlock	5
DL4100 Series Mortise Deadbolt	6
PL5000 Series Padlock	7
Cylindrical Locks	
CL3100 Series Vandal Resistant Lever Lock	8-9
CLX3300 Series Cylindrical Lever Locksets	10-11
CL3800 Series Cylindrical Lever Locksets	12-13
CK4300 Series Cylindrical Knob Locksets	14
CK4800 Series Cylindrical Knob Locksets	15
TL3700 Series Tubular Lock (Muséo)	16-17
Exit Devices	
ED2000 Series Exit Device	18-19
ED4000 Series Pushpad Exit Device	20-21
ED5000 Series Exit Device	22-23
Mortise Locks	
ML2000/ML20900 Series Mortise Lock	24-25
Status Indicator Upgrade Kits	26
Indicator Option Codes	27
Healthcare Hardware	28-30
Cylinders	31-32
Door Closers	
DC3000 Series	36
DC6000 Series	34-35
DC8000 Series	36-37
Order Forms	38-42

TERMS AND CONDITIONS

All Quick Ship orders will ship from Corbin Russwin within the specified time after receipt of order or Corbin Russwin will pay freight costs.

Quick Ship

Orders:

- Orders can be submitted to order entry via fax @ 800-260-8598 or email qsorders.corbinrusswin@assaabloy.com

Program Guidelines:

- 24-Hour
 - Orders received prior to 1pm EST will ship within 24 hours
 - Standard Buying Program discounts less 10% are automatically applied
 - Electrified products – Maximum 50 locks per order
 - Orders cannot be changed or cancelled
- 1-Week
 - Orders received prior to 4:30 EST will ship within 5 working days
 - Standard Buying Program discounts apply
 - Project quote discount less 5% is automatically applied
 - Orders can be changed or cancelled within 24 hrs of receipt without a fee, if manufacture of product has not started
 - If product has been started, orders changed or cancelled will incur a 45% fee
 - The change/cancellation fee will be billed on the Customer's original order
- 2-Week
 - Orders received prior to 4:30 EST will ship within 10 working days
 - Standard Buying Program discount or project quote discounts are applicable
 - Limited to \$50,000 net/net orders
 - Orders changed or cancelled 3 days after receipt of order will affect the shipping date and will result in a charge of cost for materials and incurred labor
 - If the product has been made, a 45% fee will apply
 - The change/cancellation fee will be billed on the Customer's original order

Shipments:

- All shipments are made F.O.B. factory, Berlin, CT
- Shipping charges are prepaid and will be added to your invoice
- Prepaid freight limit of \$7,000
- UPS Ground for small orders, unless indicated otherwise
- Large orders ship via Corbin Russwin's standard freight carrier
- Shipments may be subject to small parcel handling charges and fuel surcharges

Pricing:

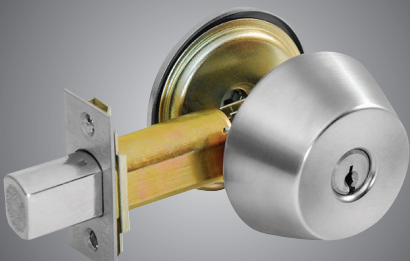
- Refer to the Corbin Russwin Price Book for product pricing and Buying Program for discounts

Returns:

- Refer to the Corbin Russwin Price Book for the policy on returned goods.

AUXILIARY LOCKS

DL2200 SERIES DEADLOCKS



PROGRAM	FUNCTION				FINISH			
24 hour	DL2217				626			
1 week	DL2211	DL2212	DL2213	DL2217	613E	626		
2 week	DL2260	DL2261			605 ²	606 ²	612 ²	613
					613E	625 ²	626	

PRODUCT DETAILS

Strike:
2-3/8" x 1-1/8" (standard) - SD234

ANSI/BHMA:
DL2200 Series - Grade 2
DL3200 Series - Grade 1

Backset:
2-3/4" - B234

Door Thickness:
1-3/4" - D134

ORDER DETAILS

Function:

DL2211	Cylinder x Blank
DL2212	Double Cylinder
DL2213	Single Cylinder
DL2217	Classroom
DL2260	Thumbturn x Blank
DL2261	Thumbturn x Indicator x V21

Keyway - 0 Bit (standard):

59A1 ¹
60
D1
L4

Finish:

605 ²	Polished brass, clear coated
606 ²	Satin brass, clear coated
612 ²	Satin bronze, clear coated
613	Dark oxidized satin bronze, oil rubbed
613E	Dark oxidized satin bronze - equivalent
625 ²	Bright chrome plated
626	Satin chrome plated

Keying Options:

6P	Conventional 6-pin (standard)
CL6 ¹	LFIC 6-pin less core
KR	Keyed Random
LC	Less Cylinder
M17	ANSI Wrought Strike Box

1. Not available with 24 hour program
2. Maximum order of 25 locks

SAMPLE ORDER STRING

Quantity	Series/Function	Door Thickness	Finish	Options
24	DL2213	D134	626	CL6

AUXILIARY LOCKS

DL3200 SERIES DEADLOCKS



PROGRAM	FUNCTION				FINISH			
24 hour	DL3217				626			
1 week	DL3211 DL3260	DL3212	DL3213	DL3217	613E	626		
2 week					605 ² 613E	606 ² 625 ²	612 ² 626	613

PRODUCT DETAILS

Strike:

2-3/8" x 1-1/8" (standard) - SD234

ANSI/BHMA:

DL2200 Series - Grade 2

DL3200 Series - Grade 1

Backset:

2-3/4" - B234

Door Thickness:

1-3/4" - D134

ORDER DETAILS

Function:

DL3211	Cylinder x Blank
DL3212	Double Cylinder
DL3213	Single Cylinder
DL3217	Classroom
DL3260	Thumbturn x Blank

Finish:

605 ²	Polished brass, clear coated
606 ²	Satin brass, clear coated
612 ²	Satin bronze, clear coated
613	Dark oxidized satin bronze, oil rubbed
613E	Dark oxidized satin bronze - equivalent
625 ²	Bright chrome plated
626	Satin chrome plated

Keyway - 0 Bit (standard):

59A1 ¹
60
D1
L4

Keying Options:

6P	6P Conventional 6-pin (standard)
CL6 ¹	LFIC 6-pin less core
KR	Keyed Random
LC	Less Cylinder
M17	ANSI Wrought Strike Box

1. Not available with 24 hour program
2. Maximum order of 25 locks

SAMPLE ORDER STRING

Quantity	Series/Function	Door Thickness	Finish	Options
24	DL2213	D134	626	CL6

AUXILIARY LOCKS

DL4100 SERIES DEADLOCKS



PROGRAM	FUNCTION			FINISH					
24 hour	DL4117			626					
1 week	DL4111 DL4117	DL4112	DL4113	613E	619	626			
2 week		DL4122	DL4160	605	606	612	613	613E	619
				625	626				

PRODUCT DETAILS

Strike:
3-1/2" x 1-1/8" (standard) - SD001

Door Thickness:
1-3/4" - D134

ORDER DETAILS

Function:

DL4111	Cylinder x Blank
DL4112	Double Cylinder
DL4113	Single Cylinder
DL4117	Classroom
DL4122	Double Cylinder x Thumbturn
DL4160	Thumbturn x Blank

Options:

M17	ANSI Wrought Strike Box
M40	Box for standard strike

Finish:

605	Polished brass, clear coated
606	Satin brass, clear coated
612	Satin bronze, clear coated
613	Dark oxidized satin bronze, oil rubbed
613E	Dark oxidized satin bronze - equivalent
619	Satin nickel, clear coated
625	Bright chrome plated
626	Satin chrome plated

Keyway - 0 Bit (standard):

59A1 ¹
60
D1
L4

Keying Options:

6P	6P Conventional 6-pin (standard)
CL6 ¹	LFIC 6-pin less core
KR	Keyed Random
LC	Less Cylinder

1. Not available with 24 hour program

SAMPLE ORDER STRING

Quantity	Series/Function	Door Thickness	Finish	Misc. Options
7	DL4112	D134	626	M40

AUXILIARY LOCKS

PL5000 SERIES PADLOCKS



PROGRAM	FUNCTIONS						
24 hour	PL5000R	PL5100R	PL5200R				
1 week & 2 week	PL5000R PL5270	PL5070 PL5280	PL5080	PL5100R	PL5170	PL5180	PL5200R

ORDER DETAILS

Function:

PL5000R	Hardened Steel; Rekeyable Fixed Core
PL5070	Hardened Steel; Interchangeable Core, Less Core
PL5080	Hardened Steel; Interchangeable Core
PL5100R	Brass; Rekeyable Fixed Core
PL5170	Brass; Interchangeable Core, Less Core
PL5180	Brass; Interchangeable Core
PL5200R	Stainless Steel; Rekeyable Fixed Core
PL5270	Stainless Steel; Interchangeable Core, Less Core
PL5280	Stainless Steel; Interchangeable Core

Keyway - 0 Bit (standard):

L4
D1
59A1 ¹
60

Keying Options:

6P	6P Conventional 6-pin (standard)
KR	Keyed Random

1. Not available with 24 hour program

SAMPLE ORDER STRING

Quantity	Series/Function	Misc. Options
4	PL5080	KR

CYLINDRICAL LOCKS

CL3100 SERIES VANDAL RESISTANT LEVER LOCK

PROGRAM	FUNCTIONS			TRIM					FINISH	
1 week & 2 week	CL3110 CL3152 CL3161	CL3120 CL3155 CL3172	CL3151 CL3157 CL3175	AZC NZK	AZD PZC	AZK PZD	NZC PZK	NZD	613E	626

Trim Designs



Armstrong (A)



Newport (N)



Princeton (P)



C Rose



D Rose



K Rose

CYLINDRICAL LOCKS

CL3100 SERIES VANDAL RESISTANT LEVER LOCK



PRODUCT DETAILS

Strike:

ANSI Curved Lip Strike (standard) - SA114

ANSI/BHMA:

Grade 1

Backset:

2-3/4" - B234

Door Thickness:

1-3/4" - D134

ORDER DETAILS

Function:

CL3110	Passage or Closet
CL3120	Privacy, Bedroom or Bathroom
CL3151	Entrance or Office
CL3152	Classroom Intruder
CL3155	Classroom
CL3157	Storeroom or Closet
CL3161	Entry or Office
CL3172	Apartment, Exit or Public Toilet

Finish:

613E	Dark oxidized satin bronze - equivalent
626	Satin chrome plated

Options:

M08 ^{1,2}	Lever to accept SFIC 6 or 7-pin interchangeable core (NZD & PZD design only)
M17	ANSI Wrought Strike Box

Keyway - 0 Bit (standard):

59A1 ²
60
D1
L4

Keying Options:

6P	6P Conventional 6-pin (standard)
C ²	Schlage® C keyway cylinder
CL6	LFIC 6-pin less core
KR	Keyed Random
LA ²	Sargent® LA keyway cylinder
LC	Less Cylinder

1. Not available with AZC, AZD, AZK trim

2. Not available with 24 hour program

SAMPLE ORDER STRING

Quantity	Series/Function	Door Thickness	Trim	Finish	Misc. Options	Keying
24	CL3155	D134	NZD	626	M08	LC

CYLINDRICAL LOCKS

CLX3300 SERIES

PROGRAM	FUNCTIONS			TRIM			FINISH
1 & 2 week	CLX3310 CLX3351 CLX3357 CLX3372	CLX3320 CLX3352 CLX3361 CLX3380	CLX3350 CLX3355 CLX3370	AZD	NZD	PZD	626

Trim Designs



AZD



NZD



PZD

CYLINDRICAL LOCKS

CLX3300 SERIES



PRODUCT DETAILS

Strike:

ANSI Curved Lip Strike (standard) - SA114

ANSI/BHMA:

Grade 1

Backset:

2-3/4" - B234

Door Thickness:

1-3/4" - D134

ORDER DETAILS

Function:

CLX3310	Passage or Closet
CLX3320	Privacy, Bedroom or Bathroom
CLX3350	Half Dummy Trim
CLX3351	Entrance or Office
CLX3352	Classroom Intruder
CLX3355	Classroom
CLX3357	Storeroom or Closet
CLX3361	Entry or Office
CLX3372	Apartment, Exit or Public Toilet
CLX3380	Passage x Blank Plate

Finish:

626 Satin chrome plated

Options:

M08	Lever to accept SFIC 6 or 7-pin interchangeable core (all designs)
M17	ANSI Wrought Strike Box

Keyway - 0 Bit (standard):

59A1
60
D1
L4

Keying Options:

6P	6P Conventional 6-pin (standard)
C	Schlage® C keyway cylinder
CL6	LFIC 6-pin less core
KR	Keyed Random
LA	Sargent® LA keyway cylinder
LC	Less Cylinder

SAMPLE ORDER STRING

Quantity	Series/Function	Door Thickness	Trim	Finish	Hand	Misc. Options	Keying
24	CLX3355	D134	NZD	626	RHR	M08	KR

CYLINDRICAL LOCKS

CL3800 SERIES

PROGRAM	FUNCTIONS			TRIM			FINISH		
24 hour							626		
1 week	CL3810	CL3820	CL3851				613	613E	626
	CL3855	CL3857	CL3861	AZD	NZD	PZD	605 ¹	606 ¹	612 ¹
2 week	CL3870						613	613E	619
							625 ¹	626	

1. Maximum order of 25 locks

Trim Designs



AZD



NZD



PZD

CYLINDRICAL LOCKS

CL3800 SERIES



PRODUCT DETAILS

Strike:

ANSI Curved Lip Strike (standard) - SA114

ANSI/BHMA:

Grade 2

Backset:

2-3/4" - B234

Door Thickness:

1-3/4" - D134

ORDER DETAILS

Function:

CL3810	Passage or Closet
CL3820	Privacy, Bedroom or Bathroom
CL3851	Entrance or Office
CL3855	Classroom
CL3857	Storeroom or Closet
CL3861	Entry or Office
CL3870	Full Dummy

Finish:

605 ²	Polished brass, clear coated
606 ²	Satin brass, clear coated
612 ²	Satin bronze, clear coated
613	Dark oxidized satin bronze, oil rubbed
613E	Dark oxidized satin bronze - equivalent
619	Satin nickel, clear coated
625 ²	Bright chrome plated
626	Satin chrome plated

Options:

M08 ¹	Lever to accept SFIC 6 or 7-pin interchangeable core (all designs)
M17	ANSI Wrought Strike Box

Keyway - 0 Bit (standard):

59A1 ¹
60
D1
L4

Keying Options:

6P	Conventional 6-pin (standard)
C ¹	Schlage® C keyway cylinder
CL6 ¹	LFIC 6-pin less core
KR	Keyed Random
LA ¹	Sargent® LA keyway cylinder
LC	Less Cylinder

6-pin cylinder only

1. Not available with 24 hour program
2. Maximum order of 25 locks

SAMPLE ORDER STRING

Quantity	Series/Function	Door Thickness	Trim	Finish	Hand	Misc. Options	Keying
24	CL3855	D134	NZD	626	RHR	M17	LC



CYLINDRICAL LOCKS

CK4300 SERIES

PROGRAM	FUNCTIONS	TRIM	FINISH		
1 week & 2 week	CK4310 CK4320 CK4351 CK4355 CK4357	GRD	605	613E	630

Trim Design



GRD

PRODUCT DETAILS

Strike:

ANSI Curved Lip Strike (standard) - SA114

ANSI/BHMA:

Grade 1

Backset:

2-3/4" - B234

Door Thickness:

1-3/4" - D134

ORDER DETAILS

Function:

CK4310	Passage or Closet
CK4320	Privacy, Bedroom or Bathroom
CK4351	Entrance or Office
CK4355	Classroom
CK4357	Storeroom or Closet

Keyway - 0 Bit (standard):

59A1
60
D1
L4

Finish:

605	Polished brass, clear coated
613E	Dark oxidized satin bronze - equivalent
630	Satin stainless steel

Keying Options:

6P	Conventional 6-pin (standard)
KR	Keyed Random
LC	Less Cylinder
M17	ANSI Wrought Strike Box

SAMPLE ORDER STRING

Quantity	Series/Function	Door Thickness	Trim	Finish	Hand	Misc. Options	Keying
24	CK4355	D134	GRD	630	RHR	M17	L4

CYLINDRICAL LOCKS

CK4800 SERIES



PROGRAM	FUNCTIONS		TRIM	FINISH		
24 hour	CK4851		GWC	626		
1 week & 2 week	CK4810	CK4820		605	613E	626
	CK4851					

Trim Design



GWC

PRODUCT DETAILS

Strike:

ANSI Curved Lip Strike (standard) - SA114

ANSI/BHMA:

Grade 2

Backset:

2-3/4" - B234

Door Thickness:

1-3/4" - D134

ORDER DETAILS

Function:

CK4810	Passage or Closet
CK4820	Privacy, Bedroom or Bathroom
CK4851	Entrance or Office

Keying Options:

6P	Conventional 6-pin (standard)
KR	Keyed Random
LC	Less Cylinder
M17	ANSI Wrought Strike Box

Finish:

605	Polished brass, clear coated
613E	Dark oxidized satin bronze - equivalent
626	Satin Chromium Plated

1. Not available with 24 hour program

Keyway - 0 Bit (standard):

59A1¹
60
D1
L4

SAMPLE ORDER STRING

Quantity	Series/Function	Door Thickness	Trim	Finish	Hand	Misc. Options	Keying
24	CK4851	D134	GWC	626	RHR	M17	L4

TUBULAR LOCKS

TL3700 SERIES

PROGRAM	FUNCTIONS			TRIM				FINISH			
24 hour				102T	110T			626	630		
1 week	TL3710 TL3720A TL3770	TL3710A TL3750 TL3780	TL3720 TL3750S TL3780A	102T 110T 125T	103T 116T 25MT ¹	107T 123T	109T 124T	613E	619	626	630
2 week				102T 110T 123T 131T	103T 114T 124T 25MT ¹	107T 115T 125T	109T 116T 130T	605 ² 619	612 ² 625 ²	613 626	613E 630

Trim Designs



102



103



107



109



110



114



115



116



123



124



125



131



25M¹



T Rose

TUBULAR LOCKS

TL3700 SERIES



PRODUCT DETAILS

Strike:

Curved lip "T" strike (standard) - SC114

Backset:

2-3/4" - B234

Door Thickness:

1-3/4" - D134

ORDER DETAILS

Function:

TL3710	Passage
TL3710A	Passage - 3 hour
TL3720	Privacy
TL3720A	Privacy - 3 hour
TL3750	Half Dummy Trim - Through Bolted
TL3750S	Half Dummy Trim - Surface Bolted
TL3770	Full Dummy Trim - Through Bolted
TL3780	Communicating
TL3780A	Communicating - 3 Hour

Finish:

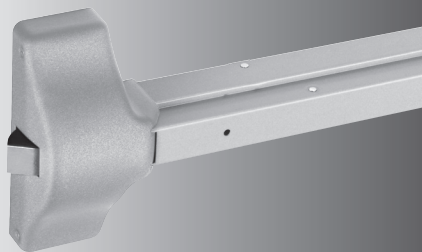
605 ²	Polished brass, clear coated
612 ²	Satin bronze, clear coated
613	Dark oxidized satin bronze, oil rubbed
613E	Dark oxidized satin bronze - equivalent
619	Satin nickel, clear coated
625 ²	Bright chrome plated
626	Satin chrome plated
630 ¹	Satin stainless steel

1. 25M available in satin stainless steel only
2. Maximum order of 25 locks

SAMPLE ORDER STRING

Quantity	Series/Function	Door Thickness	Trim	Finish	Hand
25	TL3710	D134	102T	626	RH





PROGRAM	EXIT DEVICE	TRIM	FUNCTION	FINISH
24hr	ED2200	N5 ¹	10 50 55 57	689
1 week	ED2200 ED2200A	N5 ¹ PR5	10 50 55 57	689
2 week	ED2400 ED2400A	P18 ²	50 57	695

1. Available in 626 only

2. Available in 689, 690, 691 only

Trim Designs



P18
(Leaf Pull)



PR5
(Princeton)



N5
(Newport)

PRODUCT DETAILS

Projection:

2-1/2"

ANSI/BHMA:

Grade 1

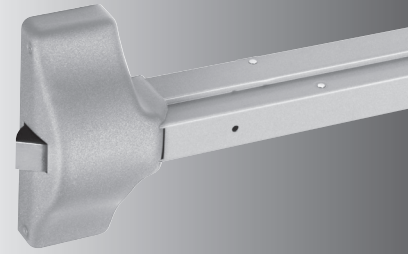
Door Thickness:

1-3/4" - D134

Note: Device and Trim are shipped in individual boxes.

EXIT DEVICES

ED2000 SERIES



ORDER DETAILS

Type:

ED2200	Rim Device
ED2200A	Rim Device - 3 hr. fire rated
ED2400	Surface Vertical Rod Device
ED2400A	Surface Vertical Rod Device - 3 hr. fire rated

Finish:

689	Silver aluminum painted
695	Dark bronze painted

Options:

M51	Less Dogging
M54	Sex Nuts
M58	Shim Kit for vision light

Hand:

RHR	Right Hand Reverse
LHR	Left Hand Reverse

Door Width:

W036	Standard
W048	48"

Keyway - 0 Bit (standard):

59A1
60
D1
L4

Keying Options:

6P	Conventional 6-pin (standard)
CL6	IC 6-pin less core
LC	Less Cylinder (Standard)
KR	Keyed Random

SAMPLE ORDER STRING

Quantity	Exit Device	Trim/ Function	Finish		Hand	Door Width	Misc. Options
			Trim	Device			
32	ED2200	P1857	689	689	LHR	W048	M54

EXIT DEVICES

ED4000 SERIES



PROGRAM	EXIT DEVICE	TRIM	FUNCTION	FINISH		
1 week	ED4200 ²	A N PR	810	613E	619	626 ¹
	ED4200MA ²			630 ¹		
2 week	ED4400		850	605 ²	606 ²	612 ²
	ED4400MA		855	613 ²	613E	619
	ED4800		859	626 ¹	630 ¹	
	ED4800MA					

- 626 Finish trims are supplied with a 630 stainless steel exit device
- Finishes 605, 606, 612, 613, 619, available with ED4200 Rim devices only. Maximum order of 25 devices.

Trim Designs

Levers



Armstrong (A)



Newport (N)



Princeton (PR)

PRODUCT DETAILS

Strike:

ANSI - non handed

Door Width:

W036 Standard

Projection:

3-1/4"; 2-3/4" Dogged

Door Thickness:

1 3/4" - D134

EXIT DEVICES

ED4000 SERIES



ORDER DETAILS

Type:

ED4200 ²	Rim Device
ED4200MA ²	Rim Device - 3 hr. fire rated
ED4400	Surface Vertical Rod Device
ED4400MA	Surface Vertical Rod Device - 3 hr. fire rated
ED4800	Concealed Vertical Rod Device
ED4800MA	Concealed Vertical Rod Device - 3 hr. fire rated

Function:

810	Passage
850	Dummy
855	Classroom
859	Storeroom/Nightlatch

Finish:

605 ²	Polished brass, clear coated
606 ²	Satin brass, clear coated
612 ²	Satin bronze, clear coated
613 ²	Dark oxidized satin bronze, oil rubbed
613E	Dark oxidized satin bronze - equivalent
619	Satin nickel, clear coated
626 ¹	Satin chrome plated*
630 ¹	Satin stainless steel*

Options:

H0800	8' door
M51	Less Dogging
M52 ³	Cylinder Dogging
M54	Sex Nuts
M58	Shim Kit for Vision Light
M64	Wood Screws
MELR	Motorized Electric Latch Retraction
W048	48" Door Width

Hand:

RHR	Right Hand Reverse
LHR	Left Hand Reverse

Keyway - 0 Bit (standard):

59A1
60
D1
L4

Keying Options:

6P	Conventional 6-pin (standard)
CL6	LFIC 6-pin less core
KR	Keyed Random
LC	Less Cylinder (standard)

Accessories:

653F13 x 630	2" rod extension
655F17 x 630	12" rod extension
BPS-24-1	Power Supply 1 AMP @ 24VDC
BPS-24-2	Power Supply 2 AMP @ 24 VDC
BPS-24-4	Power Supply 4 AMP @ 24 VDC

1. 626 Finish trims are supplied with a 630 stainless steel exit device.
2. Finishes 605, 606, 612, 613, 619, available with ED4200 Rim devices only. Maximum order of 25 devices.
3. M52 is not available with fire rated (A) devices.

SAMPLE ORDER STRING

Quantity	Exit Device	Trim/Function	Finish	Hand	Cylinder Option
2	ED4200	N855	630	LHR	CL6

EXIT DEVICES

ED5000 SERIES

PROGRAM	EXIT DEVICE	TRIM						FUNCTION	FINISH	
24 hour		L	N						630	
1 week	ED5200 ED5200A	A	C	D	L	N	PR	910 950 955 957 959	613E	619
		R	TH	102	103	107	109		626 ³	630 ³
		110	116	123	124	125	25M ¹			
2 week	ED5200S ED5200SA	A	C	D	L	N	PR	910 950 955 957 959	605 ²	606 ²
		R	TH	102	103	107	109		612 ²	613 ²
		110	114	115	116	123	124		613E	619
		125	131	25M ¹				626 ³	630 ³	

PROGRAM	EXIT DEVICE	TRIM						FUNCTION	FINISH	
24 hour		102	110						630	
1 week	ED5400 ED5400A ED5470 ED5470B ED5600L ED5600AL	A	C	D	L	N	PR	910 950 955 957 959	613E	619
		R	TH	102	103	107	109		626 ³	630 ³
		110	116	123	124	125	25M ¹			
2 week	ED5600T ED5600AT ED5800 ED5800A ED5860 ED5860B	A	C	D	L	N	PR	910 950 955 957 959	605	606
		R	TH	102	103	107	109		612	613
		110	114	115	116	123	124		613E	619
		125	131	25M ¹				626 ³	630 ³	

1. 25M available in satin stainless steel only

2. Finishes 605, 606, 612, 613, 619, available with ED5200 Rim devices only. Maximum order of 25 devices.

3. 626 Finish trims are supplied with a 630 stainless steel exit device.

Trim Designs

Escutcheon



900 Series Trim



TH9 00 Pull/Thumbpiece

Levers



Armstrong (A)



Citation (C)



Dirke (D)



Lustra (L)



Newport (N)



Princeton (PR)



Regis (R)



102



103



107



109



110



114



115



116



123



124



125



131



25M

EXIT DEVICES

ED5000 SERIES



PRODUCT DETAILS

Strike:	ANSI Curved Lip Strike (standard) ANSI - non handed	Voltage:	24AD
Door Width:	W036 Standard	Backset:	2-3/4"

ORDER DETAILS

Type:		Options:	
ED5200 ²	Rim Device	H0800	8' door
ED5200A ²	Rim Device - 3 hr. fire rated	M51 ⁶	Less Dogging
ED5200S ²	Rim Device - SecureBolt	M52 ^{4,6}	Cylinder Dogging
ED5200SA ²	Rim Device - SecureBolt, 3 hr. fire rated	M54 ⁶	Sex Nuts
ED5400	Surface Vertical Rod Device	M55 ⁵	Less Bottom Rod
ED5400A	Surface Vertical Rod Device - 3 hr. fire rated	M58	Shim Kit for Vision Light
ED5470	Surface Vertical Rod Device - 10 ft opening	M61 ⁶	Exit Alarm
ED5470B	Surface Vertical Rod Device - 1-1/2 hr. fire rated	M64	Wood Screws
ED5600 ³	Mortise Device	M91 ⁶	Bolt Position Monitoring
ED5600AL	Mortise Device Double Cylinder 3 hr. fire rated	M92 ⁶	Request to Exit
ED5800	Concealed Vertical Rod Device	M110	Flush End Cap
ED5800A	Concealed Vertical Rod Device - 3 hr. fire rated	MELR	Motorized Electric Latch Retraction
ED5860	Concealed Vertical Rod Device - 10 ft opening	W048	48" device length
ED5860B	Concealed Vertical Rod Device - 1-1/2 hr. fire rated	5CH	5lb Pressure Release
Function:		Hand:	
9 x 10	Passage	RHR	Right Hand Reverse
9 x 50	Dummy	LHR	Left Hand Reverse
9 x 55	Classroom		
9 x 57	Nightlatch		
9 x 59	Storeroom		
Finish:		Keyway - 0 Bit (standard):	
605 ²	Polished brass, clear coated	59A1 ⁶	
606 ²	Satin brass, clear coated	60	
612 ²	Satin bronze, clear coated	D1	
613 ²	Dark oxidized satin bronze, oil rubbed	L4	
613E	Dark oxidized satin bronze - equivalent		
619	Satin nickel, clear coated		
626 ¹	Satin chrome plated ¹		
630 ¹	Satin stainless steel ¹		
		Keying Options:	
		6P	Conventional 6-Pin (standard)
		CL6 ⁶	LFIC 6-pin Less Core
		KR	Keyed Random
		LC	Less Cylinder (standard)
		Accessories:	
		655F15 x 630	2" Rod Extension
		655F17 x 630	12" Rod Extension
		ED50AK	Alarm Kit

- 626 Finish trims are supplied with a 630 stainless steel exit device
- Finishes 605, 606, 612, 613, 619, available with ED5200 Rim devices only.
Maximum order of 25 devices
- ED5600 Exit only, NO trim
- M52 is not available with fire rated devices
- M55 is only available with ED5470(B) and ED5860(B)
- Not available with 24 hour program

SAMPLE ORDER STRING

Quantity	Exit Device	Trim/Function	Finish	Hand	Cylinder Option	Door Thickness	Door Width
2	ED5600	L9M10	630	LHR	6P	D200	W048

MORTISE LOCKS

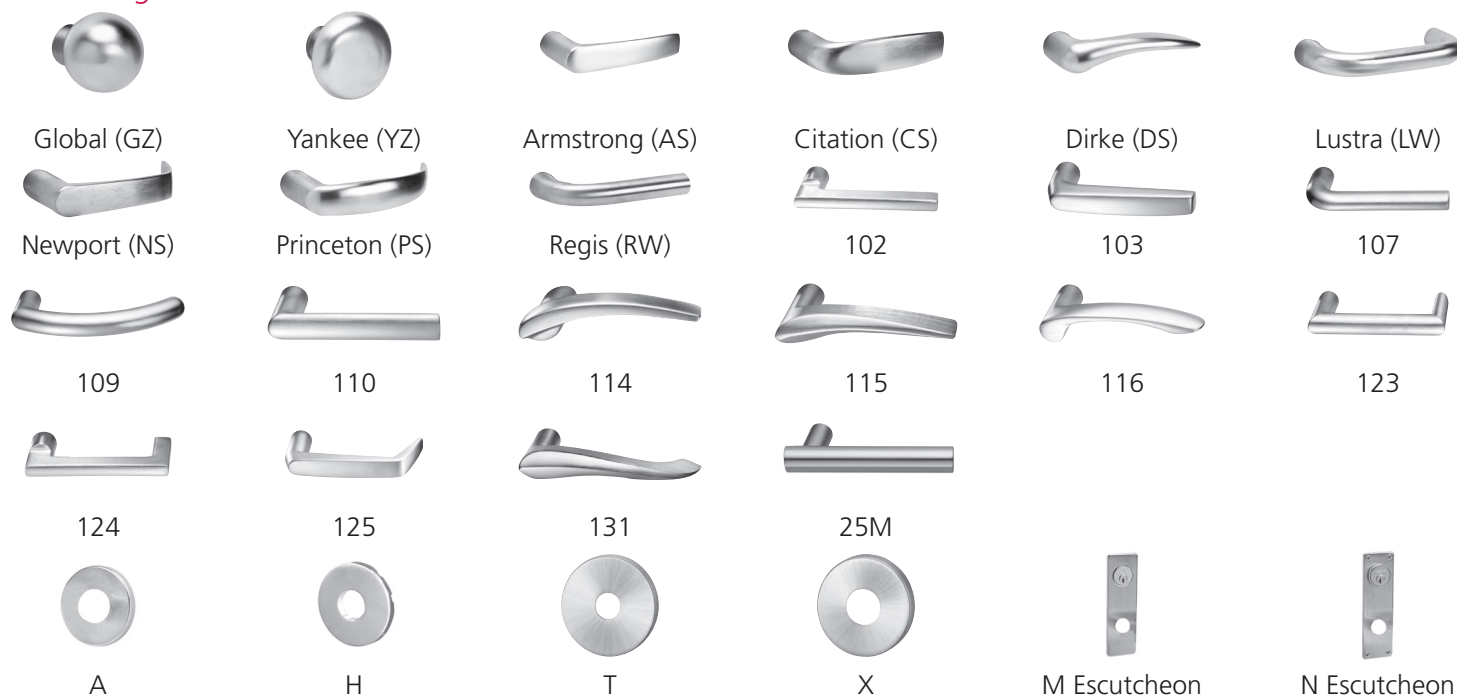
ML2000/ML20900 SERIES

PROGRAM	FUNCTIONS				LEVER				ESCUTCHEON/ ROSE			FINISH
24 hour*	ML2010 ML20906 ML20932	ML2055 ML20907	ML2057 M20914	ML2072 ML20915	CS PS	LL ⁶	LW	NS	A	M	N	626
1 week	ML2010 ML2048 ML2053 ML2060 ML2069 ML2080 ML20907*	ML2011 ML2050 ML2055 ML2062 ML2070 ML2082 M20914*	ML2020 ML2051 ML2056 ML2065 ML2072 ML2090 ML20915*	ML2030 ML2052 ML2057 ML2067 ML2073 ML20906* ML20932*	AS LW RW	CS NS 102	DS PS 103	GZ YZ 107 109 110 116 123 124 125 25M ¹ LL ⁶	A H (GZ, YZ) M N T X			613E 619 626 630 ^{1,5}
2 week	ML2010 ML2024 ML2048 ML2054 ML2060 ML2069 ML2080 ML20907*	ML2011 ML2030 ML2051 ML2055 ML2062 ML2070 ML2082 M20914*	ML2020 ML2032 ML2052 ML2056 ML2065 ML2072 ML2090 ML20915*	ML2022 ML2042 ML2053 ML2057 ML2067 ML2073 ML20906* ML20932*	AS LW RW	CS NS 102	DS PS 103	GZ YZ 107 109 110 114 115 116 123 124 125 131 25M ¹ LL ⁶				605 ⁵ 606 ⁵ 612 ⁵ 613 613E 619 626 630 ^{1,5}

- 1. 25M available in satin stainless steel only
- 4. Maximum order of 15 locks
- 5. Maximum order of 25 locks
- 6. Lockbody only



Trim Designs



MORTISE LOCKS

ML2000/ML20900 SERIES



PRODUCT DETAILS

Strike:

ANSI Straight Lip Strike (standard)

ANSI/BHMA:

Grade 1

Backset:

2-3/4"

ORDER DETAILS

Function:

Non-Keyed	ML2010	Passage or Closet
	ML2020	Privacy, Bedroom or Bathroom
	ML2030	Privacy
	ML2050	Half Dummy
	ML2060	Privacy
	ML2070	Full Dummy
	ML2080	Half Active Dummy Trim
	ML2090	Full Active Dummy Trim
Single Cylinder	ML2011	Deadlock
	ML2051	Office
	ML2053	Entrance
	ML2054	Entrance or Office
	ML2055	Classroom
	ML2056	Classroom Holdback
	ML2057	Storeroom
	ML2069	Institutional Privacy
	ML20906 ⁴	
	ML20914 ⁴	
Single Cylinder With Deadbolt	ML2024	Entrance or Showroom
	ML2048	Entrance
	ML2065	Dormitory
	ML2067	Apartment
	ML2073	Classroom Security
No Cylinder Override	ML20907 ⁴	
	ML20915 ⁴	
Double Cylinder	ML2032	Institutional or Privacy
	ML2042	Entrance or Public Restroom
	ML2052	Classroom Intruder
	ML2082	Dormitory
	ML20932 ⁴	
Double Cylinder with Deadbolt	ML2022	Store Door
	ML2032	Institutional or Privacy
	ML2042	Entrance or Public Restroom
	ML2062	Intruder Deadbolt

Finish:

605 ⁵	Polished brass, clear coated
606	Satin brass, clear coated
612 ⁵	Satin bronze, clear coated
613	Dark oxidized satin bronze, oil rubbed
613E	Dark oxidized satin bronze - equivalent
619	Satin nickel, clear coated
626	Satin chrome plated
630 ^{1,5}	Satin stainless steel*

Options:

M17 ANSI Wrought Strike Box

Electrified Options:

M91	Latchbolt Monitor
M92	Request to Exit
M105 ³	Security Monitor
SAF	Fail Safe
SEC	Fail Secure

Hand:

RH	Right Hand
LH	Left Hand
RHR	Right Hand Reverse
LHR	Left Hand Reverse

Keyway - 0 Bit (standard):

59A1 ²
60
D1
L4

Keying Options:

6P	Conventional 6-pin (standard)
C6 ²	LFIC 6-pin (optional)
CL6 ²	LFIC 6-pin less core
CLS6 ²	SFIC 6-pin less core
KR	Keyed Random
LC	Less Cylinder

1. 25M available in satin stainless steel only
2. Not available with 24 hour program
3. Not available with 24 hour or 1 week program
4. Maximum order of 15 locks
5. Maximum order of 25 locks

SAMPLE ORDER STRING


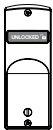
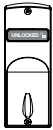
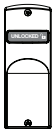
Quantity	Series/Function	Trim	Finish	Hand	Misc.Options	Optional Cylinder
24	ML2055	LWA	626	RHR	M17	C6
10	ML20906	103T	613E	RH	SAF	CL6



MORTISE LOCKS

STATUS INDICATOR UPGRADE KITS

Used in a variety of applications, status indicators are most commonly used to identify occupancy or display the locked/unlocked status of a room.

PROGRAM	ILLUSTRATION	MODEL #	USED WITH FUNCTIONS	AVAILABLE OPTION CODES	INDICATOR LOCATION ¹
1-Week & 2-Week		ML190	ML2002, ML2003, ML2004, ML2011, ML2012, ML2013, ML2017, ML2022, ML2024, ML2029, ML2048, ML2049, ML2059, ML2062, ML2065, ML2067, ML2068, ML2069, ML2072, ML2073, ML2075, ML2082, ML2092, ML20608 x NAC x PHR	Outside Trim: V10, V10F, V20, V20F, V30, V40, V50, V60 Inside Trim: V01, V01F, V03, V04, V06	Inside and/or Outside per Function
		ML193	ML2020, ML2030, ML2060	V10, V10F, V20, V20F, V30, V40, V50, V60	Outside
		ML194	ML2004, ML2013, ML2017, ML2020, ML2024, ML2029, ML2030, ML2040, ML2048, ML2049, ML2060, ML2065, ML2067, ML2068, ML2069, ML2075, ML20608 x NAC x PHR, ML20609 x NAC x PHR	V01, V01F, V03, V04, V06	Inside
		ML197	ML2003, ML2011, ML2040, ML2059, ML2073, ML20609 x NAC x PHR	Outside Trim: V10, V10F, V20, V20F, V30, V40, V50, V60 Inside Trim: V01, V01F, V03, V04, V06	Inside or Outside per Function

1. When indicators are required on both sides of the door, 2 upgrade kits must be ordered, one kit for each side.

Note: Indicators available in 626 finish only.

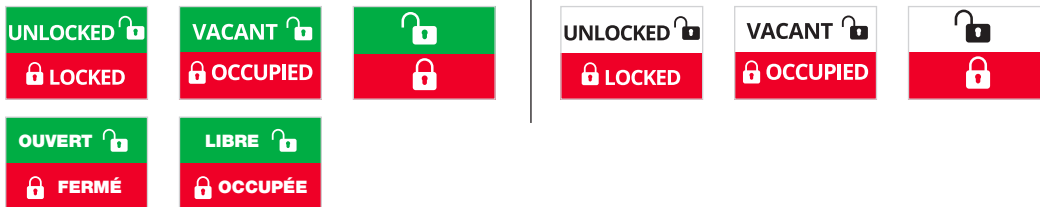
MORTISE LOCKS

INDICATOR OPTION CODES



Indicator Option Codes

ML2000 Series indicator option codes are designed to convey wording, color and side of door desired in one simple code. To order, specify option code for complete locksets and/or retrofit/upgrade trim kits.



OPTION CODE	WORDING	COLOR	MOUNTING LOCATION
V10	Unlocked/Locked	Green/Red	Outside of Door
V10F	Ouvert/Fermé	No Indicator	Green/Red
V20	Vacant/Occupied	Green/Red	Outside of Door
V20F	Libre/Occupée	No Indicator	Green/Red
V30	Icons Only	Green/Red	Outside of Door
V40	Unlocked/Locked	White/Red	Outside of Door
V50	Vacant/Occupied	White/Red	Outside of Door
V60	Icons Only	White/Red	Outside of Door
V01	No Indicator	Green/Red	Inside of Door
V01F	No Indicator	Green/Red	Inside of Door
V03	No Indicator	Green/Red	Inside of Door
V04	No Indicator	White/Red	Inside of Door
V06	No Indicator	White/Red	Inside of Door

HEALTHCARE HARDWARE

ML2000 SERIES

PROGRAM	FUNCTIONS						TRIM	FINISH
24 hour ¹	ML2010 ML2072	ML2020 ML20906	ML2051 ML20907	ML2055 ML20914	ML2057 ML20915	ML2060 ML20932	BLSS HPSK	630
1 week	ML2010 ML2051 ML2060 ML2072 ML20907	ML2011 ML2052 ML2062 ML2073 ML20914	ML2020 ML2053 ML2065 ML2080 ML20915	ML2030 ML2055 ML2067 ML2082 ML20932	ML2048 ML2056 ML2069 ML2090	ML2050 ML2057 ML2070 ML20906	BHSS BLSS HPSK	
2 week	ML2010 ML2032 ML2053 ML2062 ML2073 ML20914	ML2011 ML2042 ML2054 ML2065 ML2080 ML20915	ML2020 ML2048 ML2055 ML2067 ML2082 ML20932	ML2022 ML2050 ML2056 ML2069 ML2090	ML2024 ML2051 ML2057 ML2070 ML20906	ML2030 ML2052 ML2060 ML2072 ML20907		

Maximum order of 15 locks on all functions

1. 24 hour program has a maximum of 5 locks per order

Trim Designs



BHSS



BLSS



HPSK

HEALTHCARE HARDWARE

ML2000 SERIES



PRODUCT DETAILS

Strike:

ANSI - non handed

ANSI/BHMA:

Grade 1

Backset:

2-3/4"

ORDER DETAILS

Function:

Non-Keyed	ML2010	Passage or Closet
	ML2030	Privacy
	ML2060	Privacy
	ML2090	Full Active Dummy Trim
Single Cylinder	ML2011	Deadlock
	ML2051	Office
	ML2053	Entrance
	ML2054	Entrance or Office
	ML2055	Classroom
	ML2056	Classroom Holdback
	ML2057	Storeroom
	ML2069	Institutional Privacy
	ML20914	
	ML20906	
Single Cylinder With Deadbolt	ML2024	Entrance or Showroom
	ML2048	Entrance
	ML2065	Dormitory
	ML2067	Apartment
	ML2073	Classroom Security
No Cylinder Override	ML20907	
	ML20915	
Double Cylinder	ML2032	Institutional or Privacy
	ML2042	Entrance or Public Restroom
	ML2052	Classroom Intruder
	ML20932	
Double Cylinder With Deadbolt	ML2022	Store Door
	ML2032	Institutional or Privacy
	ML2042	Entrance or Public Restroom
	ML2062	Intruder Deadbolt

Finish:

630 Satin stainless steel

Hand:

LH	Left Hand
RH	Right Hand

Options:

M04	Torx Head Screws
M17	ANSI Wrought Strike Box

Electrified Options:

M91	Latchbolt Monitor
M92	Request to Exit
M105 ^{1,2}	Security Monitor
SAF	Fail Safe
SEC	Fail Secure

Keyway - 0 Bit (standard):

59A1
60
D1
L4

Keying Options:

6P	Conventional 6-pin (standard)
C6	LFIC 6-pin (optional)
CL6	LFIC 6-pin less core
CLS6 ²	SFIC 6-pin less core
KR	Keyed Random
LC	Less Cylinder

1. Not available with 1 week program

2. Not available with 24 hour program

SAMPLE ORDER STRING

Quantity	Series/Function	Trim	Finish	Hand	Misc. Options	Optional Cylinder
24	ML2055	HPSK	630	RHR	M04	C6



HEALTHCARE HARDWARE

HP3000

PROGRAM	FUNCTIONS	TRIM	FINISH
24 hour ¹	HP3010	HPSK	630
1 week & 2 week	HP3020		

PRODUCT DETAILS

Strike: ANSI - non handed - SA114
Door Thickness: 1-3/4" - D134

Backset: 5" Backset (standard) - B500

ORDER DETAILS

Function:
HP3010 Passage
HP3020 Privacy

Options:
B234 2-3/4"
B700 7" Back
M04 Torx Head Screws
M17 ANSI Wrought Strike Box
M38 Push/Pull Identification

Finish:
630 Satin stainless steel

Hand:
LH Left Hand
RH Right Hand
RHR Right Hand Reverse
LHR Left Hand Reverse

Maximum order of 15 locks on all functions
1. 24 hour program has a maximum of 5 locks per order.

SAMPLE ORDER STRING

Quantity	Series/Function	Door Thickness	Trim	Finish	Hand	Misc. Options
12	HP3020	D134	HPSK	630	RHR	M38

CYLINDERS



PROGRAM	TYPE	CYLINDER PART NUMBER	FINISH	KEYWAY	KEYING OPTIONS
1 week & 2 week	Mortise	CR1000-118-A01	606, 612, 619, 626	59A1 60 D1 L4	0 6P KR ³
		CR1000-118-A02			
		CR1070-114-A01			
		CR1070-114-A02			
		CR1080-114-A01			
		CR1080-114-A02			

PROGRAM	TYPE	CYLINDER PART NUMBER	FINISH	KEYWAY	KEYING OPTIONS
1 week & 2 week	Key-in Lever/Knob	CR2000-031	606, 626	59A1 60 D1 L4	0 6P KR ³
		CR2000-033			
		CR2000-034			
		CR2000-044			
		CR2400-031-LA ¹			
		CR2400-033-LA ¹			
		CR2400-034-LA ¹			
		CR2400-031-C ¹			
		CR2400-033-C ¹			
		CR2400-034-C ¹			
CR8000					

PROGRAM	TYPE	CYLINDER PART NUMBER	FINISH	KEYWAY	KEYING OPTIONS
1 week & 2 week	Deadlock/ Padlock	CR1000-118-A07	606, 626	59A1 60 D1 L4	0 6P KR ³
		CR1080-114-A07			
		CR4400-134-A51			
		CR8000			

PROGRAM	TYPE	CYLINDER PART NUMBER	FINISH	KEYWAY	KEYING OPTIONS
1 week & 2 week	Rim	CR1000-118-A02	606, 612 ² , 613 ² 619, 626	59A1 60 D1 L4	0 6P KR ³
		CR1070-114-A02			
		CR1080-114-A02			
		CR2000-033H			
		CR3000-058-6			
		CR3000-200-6			
		CR3000-200N-6			
		CR3070-058			
		CR3070-178			
		CR3080-058			
		CR3080-178			
		CR8000			

1. Available 0 bit only
2. 2 week program only
3. Not available for cylinders CR1080, CR3080 & CR8000



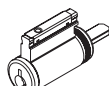
CR1000
Cylinder



CR1070
Cylinder



CR1080
Cylinder



CR2000
Cylinder



CR2400
Cylinder



CR3000
Cylinder



CR3070
Cylinder



CR3080
Cylinder



CR4400
Cylinder



CR8000
Cylinder



TYPE	CYLINDER #	DESCRIPTION
Mortise	CR1000-118-A01	6-Pin Standard Cylinder
	CR1000-118-A02	6-Pin Standard Cylinder
	CR1080-114-A01	6-Pin Large Format Interchangeable Core
	CR1080-114-A02	6-Pin Large Format Interchangeable Core
	CR1070-114-A01	Housing Only - LFIC
	CR1070-114-A02	Housing Only - LFIC
Cylindrical	CR2000-031	Standard Cylinder - CL3100
	CR2000-033	Standard Cylinder - CL3300, CL3500, CL3800
	CR2000-034	Standard Cylinder - CLX3300
	CR2000-044	Standard Cylinder - CK4400
	CR8000	6-Pin Large Format Interchangeable Core
	CR2400-031-LA	SARGENT LA Keyway Cylinder - CL3100
	CR2400-033-LA	SARGENT LA Keyway Cylinder - CL3300, CL3500, CL3800
	CR2400-034-LA	SARGENT LA Keyway Cylinder - CLX3300
	CR2400-031-C	Schlage C Keyway Cylinder - CL3100
	CR2400-033-C	Schlage C Keyway Cylinder - CL3300, CL3500, CL3800
	CR2400-034-C	Schlage C Keyway Cylinder - CLX3300
Deadlock	CR4400-134-A51	6-Pin Standard Cylinder - DL2200, DL3200 (11, 13 & 17 functions)
	CR1000-118-A07	6-Pin Standard Cylinder - DL4100
	CR8000	6-Pin Large Format Interchangeable Core - DL2200, DL3200
	CR1080-114-A07	6-Pin Large Format Interchangeable Core - DL4100
Exits	CR1000-118-A02	6-Pin Standard Cylinder - KIM57 Trim or Cylinder Dogging
	CR1080-114-A02	6-Pin Large Format Interchangeable Core - KIM57 Trim or Cylinder Dogging
	CR1070-114-A02	Housing ONLY - KIM57 Trim or Cylinder Dogging
	CR2000-033H	Key-in-Knob Cylinder for G10 Trim
	CR3000-200-6	Rim Cylinder
	CR3000-058-6	Rim Cylinders - ED5000 Series Trim (55 & 59 Function Rim & SVR)
	CR3000-200N-6	Nightlatch Trim
	CR8000	6-Pin Large Format Interchangeable Core - ED5000 (55 & 59 Function)
	CR3080-178	Rim Housing & Large Format Interchangeable Core Assembly - ED5000 (57 Function)
	CR3080-058	Rim Housing & Large Format Interchangeable Core Assembly - ED5000 (55 & 59 Function)
CR3070-178	Rim Housing ONLY, Large Format Interchangeable Core - ED5000 (57 Function)	
CR3070-058	Rim Housing ONLY, Large Format Interchangeable Core - ED5000 (55 & 59 Function)	

ORDER DETAILS

Finish:

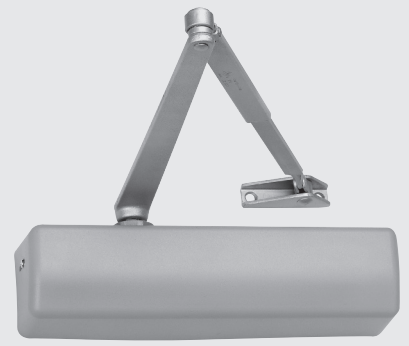
606	Satin brass, clear coated
612	Satin bronze, clear coated
619	Satin nickel, clear coated
626	Satin chrome plated

ORDER STRING

Type	Tailpiece Length	Pins	Keyway	Finish
CR3000	058	6	59A1	612

DOOR CLOSERS

DC3000 SERIES



WAREHOUSE #	DESCRIPTION
52039	DC3200M54 BODY PKD 689
52040	DC3210M54 CLOSER PKD 689

ORDER DETAILS

Finish:

689 Silver aluminum painted

Options:

M54 Sex Nuts & Bolts

Hand:

RH Right Hand

LH Left Hand

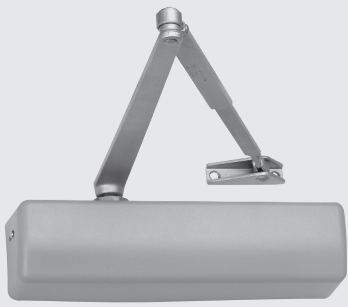
RHR Right Hand Reverse

LHR Left Hand Reverse

**Hold open arms cannot be used on fire doors.*

SAMPLE ORDER STRING

Quantity	Warehouse #
3	52039



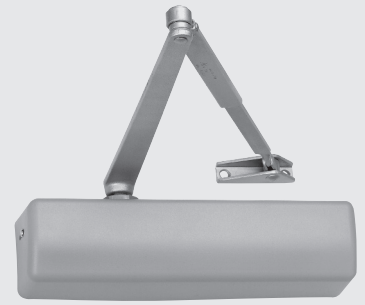
DOOR CLOSERS

DC6000 SERIES

WAREHOUSE #	DESCRIPTION
56019	DC6200M54 BODY PKD 689
56020	DC6210M54 CLOSER PKD 689

DOOR CLOSERS

DC6000 SERIES



ORDER DETAILS

Finish:

689 Silver aluminum painted

Options:

M54 Sex Nuts & Bolts

Hand:

RH Right Hand

LH Left Hand

RHR Right Hand Reverse

LHR Left Hand Reverse

**Hold open arms cannot be used on fire doors.*

SAMPLE ORDER STRING

Quantity	Warehouse #
2	56020



DOOR CLOSERS

DC8000 SERIES

WAREHOUSE #	DESCRIPTION
57200	DC8000M54 BODY PKD 689
57201	DC8210M54 CLOSER PKD 689

DOOR CLOSERS

DC8000 SERIES



ORDER DETAILS

Finish:

689 Silver aluminum painted

Options:

M54 Sex Nuts & Bolts

Hand:

RH Right Hand

LH Left Hand

RHR Right Hand Reverse

LHR Left Hand Reverse

**Hold open arms cannot be used on fire doors.*

SAMPLE ORDER STRING

Quantity	Warehouse #
4	57201



ORDER FORM - QUICK SHIP

AUXILIARY LOCKS

THIS FORM IS THE PURCHASE ORDER. DO NOT SEND A COVER P.O.
DUPLICATED ORDERS CANNOT BE RETURNED.

1-860-225-7411
www.corbinrusswin.com

FAX: 800-338-0965

EMAIL: qsorders.corbinrusswin@assaabloy.com

CUSTOMER P.O. NO. _____ DATE _____
CUSTOMER _____
CUSTOMER ACCT. NO. _____
ADDRESS _____
CITY _____ STATE _____ ZIP _____
BUYER _____ TITLE _____
SHIP GOODS TO _____
ADDRESS _____
ATTN TO _____
CITY _____ STATE _____ ZIP _____
SHIP VIA _____ STD. CARRIER _____ (OTHER) _____

Program:

FOR EDITING, DO NOT WRITE

24-Hour (Q0) **1-Week (Q1)** **2-Week (Q2)**
Quote #: _____ Quote #: _____

ORD NO.

Program	Qty	Series/Function	Finish	Misc. Options

ORDER FORM - QUICK SHIP

CYLINDRICAL LOCKS



THIS FORM IS THE PURCHASE ORDER. DO NOT SEND A COVER P.O.
DUPLICATED ORDERS CANNOT BE RETURNED.

1-860-225-7411
www.corbinrusswin.com

FAX: 800-338-0965

EMAIL: qsorders.corbinrusswin@assaabloy.com

CUSTOMER P.O. NO. _____ DATE _____

CUSTOMER _____

CUSTOMER ACCT. NO. _____

ADDRESS _____

CITY _____ STATE _____ ZIP _____

BUYER _____ TITLE _____

SHIP GOODS TO _____

ADDRESS _____

ATTN TO _____

CITY _____ STATE _____ ZIP _____

SHIP VIA _____ STD. CARRIER _____ (OTHER) _____

Program:

24-Hour (Q0) **1-Week (Q1)** **2-Week (Q2)**

Quote #: _____ Quote #: _____

FOR EDITING, DO NOT WRITE

ORD NO.

Program	Qty	Series/ Function	Trim	Finish	Hand	Misc. Options	Keying



ORDER FORM - QUICK SHIP

EXIT DEVICES

THIS FORM IS THE PURCHASE ORDER. DO NOT SEND A COVER P.O.
DUPLICATED ORDERS CANNOT BE RETURNED.

1-860-225-7411
www.corbinrusswin.com

FAX: 800-338-0965

EMAIL: qsorders.corbinrusswin@assaabloy.com

CUSTOMER P.O. NO. _____ DATE _____
 CUSTOMER _____
 CUSTOMER ACCT. NO. _____
 ADDRESS _____
 CITY _____ STATE _____ ZIP _____
 BUYER _____ TITLE _____
 SHIP GOODS TO _____
 ADDRESS _____
 ATTN TO _____
 CITY _____ STATE _____ ZIP _____
 SHIP VIA _____ STD. CARRIER _____ (OTHER) _____

Program:

24-Hour (Q0) **1-Week (Q1)** **2-Week (Q2)**
 Quote #: _____ Quote #: _____

FOR EDITING, DO NOT WRITE

ORD NO.

Program	Qty	Exit Device	Trim/Function	Finish	Hand	Cylinder Option	Hand

ORDER FORM - QUICK SHIP

MORTISE LOCKS



THIS FORM IS THE PURCHASE ORDER. DO NOT SEND A COVER P.O.
DUPLICATED ORDERS CANNOT BE RETURNED.

1-860-225-7411
www.corbinrusswin.com

FAX: 800-338-0965

EMAIL: qsorders.corbinrusswin@assaabloy.com

CUSTOMER P.O. NO. _____ DATE _____

CUSTOMER _____

CUSTOMER ACCT. NO. _____

ADDRESS _____

CITY _____ STATE _____ ZIP _____

BUYER _____ TITLE _____

SHIP GOODS TO _____

ADDRESS _____

ATTN TO _____

CITY _____ STATE _____ ZIP _____

SHIP VIA _____ STD. CARRIER _____ (OTHER) _____

Program:

FOR EDITING, DO NOT WRITE

24-Hour (Q0)

1-Week (Q1)

2-Week (Q2)

Quote #: _____

Quote #: _____

ORD NO.

Program	Qty	Series/ Function	Trim	Finish	Hand	Misc. Options	Optional Cylinder



THIS FORM IS THE PURCHASE ORDER. DO NOT SEND A COVER P.O.
DUPLICATED ORDERS CANNOT BE RETURNED.

1-860-225-7411
www.corbinrusswin.com

FAX: 800-338-0965

EMAIL: qsorders.corbinrusswin@assaabloy.com

CUSTOMER P.O. NO. _____ DATE _____

CUSTOMER _____

CUSTOMER ACCT. NO. _____

ADDRESS _____

CITY _____ STATE _____ ZIP _____

BUYER _____ TITLE _____

SHIP GOODS TO _____

ADDRESS _____

ATTN TO _____

CITY _____ STATE _____ ZIP _____

SHIP VIA _____ STD. CARRIER _____ (OTHER) _____

Program:

FOR EDITING, DO NOT WRITE

24-Hour (Q0)

1-Week (Q1)

2-Week (Q2)

ORD NO.

Quote #: _____

Quote #: _____

Program	Qty	Cylinder Option	Cylinder Type	Finish



ORDER FORM - QUICK SHIP

DOOR CLOSERS

THIS FORM IS THE PURCHASE ORDER. DO NOT SEND A COVER P.O.
DUPLICATED ORDERS CANNOT BE RETURNED.

1-860-225-7411
www.corbinrusswin.com

FAX: 800-338-0965

EMAIL: qsorders.corbinrusswin@assaabloy.com

CUSTOMER P.O. NO. _____ DATE _____
 CUSTOMER _____
 CUSTOMER ACCT. NO. _____
 ADDRESS _____
 CITY _____ STATE _____ ZIP _____
 BUYER _____ TITLE _____
 SHIP GOODS TO _____
 ADDRESS _____
 ATTN TO _____
 CITY _____ STATE _____ ZIP _____
 SHIP VIA _____ STD. CARRIER _____ (OTHER) _____

Program:

FOR EDITING, DO NOT WRITE

24-Hour (Q0) **1-Week (Q1)** **2-Week (Q2)**
 Quote #: _____ Quote #: _____

ORD NO.

Program	Qty	Warehouse #

The ASSA ABLOY Group is the global leader in access solutions. Every day, we help billions of people experience a more open world.

ASSA ABLOY Opening Solutions leads the development within door openings and products for access solutions in homes, businesses and institutions. Our offering includes doors, frames, door and window hardware, mechanical and smart locks, access control and service.



For additional information, contact your
ASSA ABLOY Door Security Solutions
sales consultant or visit www.corbinruswin.com.

In U.S.

Corbin Russwin
Architectural Hardware
225 Episcopal Road
Berlin, CT 06037
Phone: 800-543-3658
Fax: 800-447-6714
www.corbinruswin.com

In Canada

ASSA ABLOY Door
Security Solutions Canada
160 Four Valley Drive
Vaughan, Ontario
Canada L4K 4T9
Phone: 800-461-3007
Fax: 800-461-8989
www.assaabloydss.ca